

Udder health and milk quality in Danish dairy farms

Benny Kirkeby
Milk quality adviser
SEGES

SEGES

KVÆGKONGRES 2019



Department for Danish milk quality advising, SEGES

Team north and south

TEAM NORD



TEAM SYD

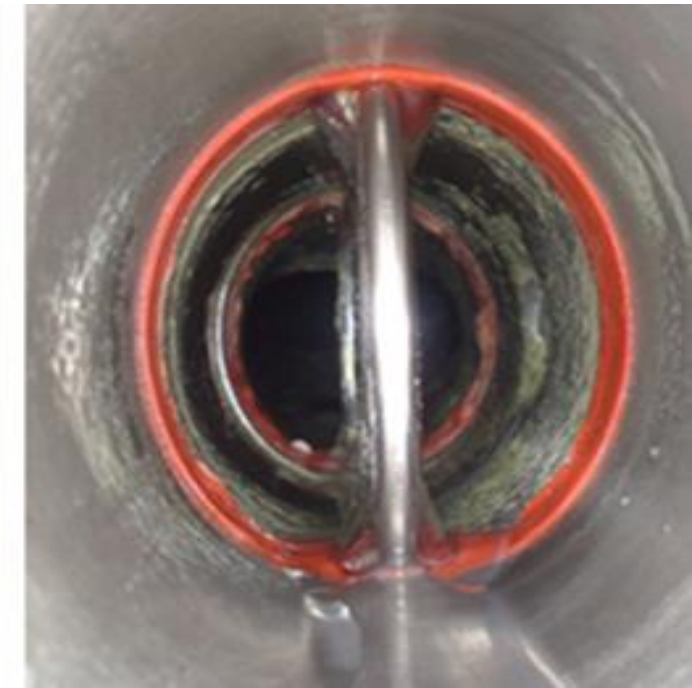
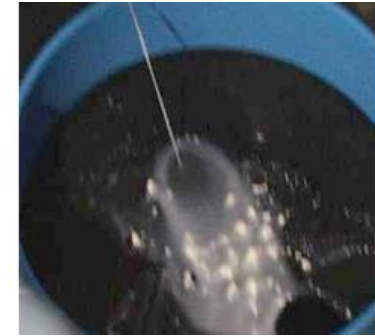
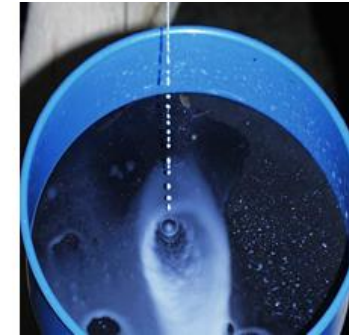
Take home messages

5 concrete things to bring home and try on your farm

1. Clean cows and clean milking equipment
2. Analyzing the milk so we know what is going on
3. Keep the milking system in a good condition and regular service
4. Evaluate milking routines, teat conditions and milk system settings routinely
5. Use the milk flow data from systems and DMS every day

Udder health in SCC DK

- Only 50% of all milk is under 200.000 SCC
- Good milk is always under 200.000 SCC
- Good milk is always under 5.000 IBC, TBS
- Good milk is always without any antibiotics



Important conditions for an improved udder health

SCORE 1

Free of dirt

SCORE 2

Slightly dirty

2 – 10 % OF SURFACE AREA

SCORE 3

Moderately covered with dirt

10 – 30 % OF SURFACE AREA

SCORE 4

Covered with caked on dirt

>30% OF SURFACE AREA



Photo credit: M-team

You have to know your mastitis!

- Is it bacteria: Uberis, Aureus, Dysgalactiae, CNS or E. coli?
- All dry off cows, 75 DKK
- Bulk tank milk every month, 175 DKK
- Milking towels
- Brushes in AMS
- Milking filters
- Beddings, 135 DKK

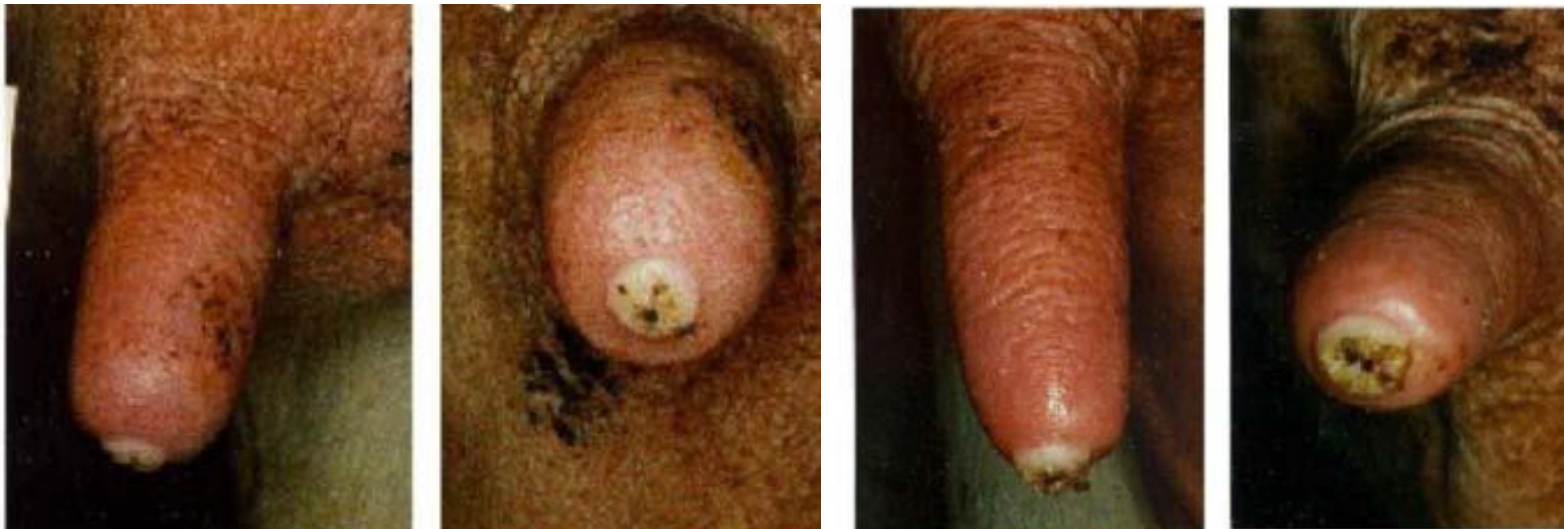
Teat score

- The cows tell you everything
- Look at the teats
- First 60 sec. after take off
- Use gloves and a flashlight
- Score 80 cows or 20% of the herd



Teat score at its worst

- Take off settings are too low
- System vacuum is too high
- If liners don't fit the teat
- Not a good prep of the cows
- + 5% of this is too much



Service of the milking system – liners



Photo credit: DeLaval

- How many milkings can a normal liner milk?
- Bucket machine

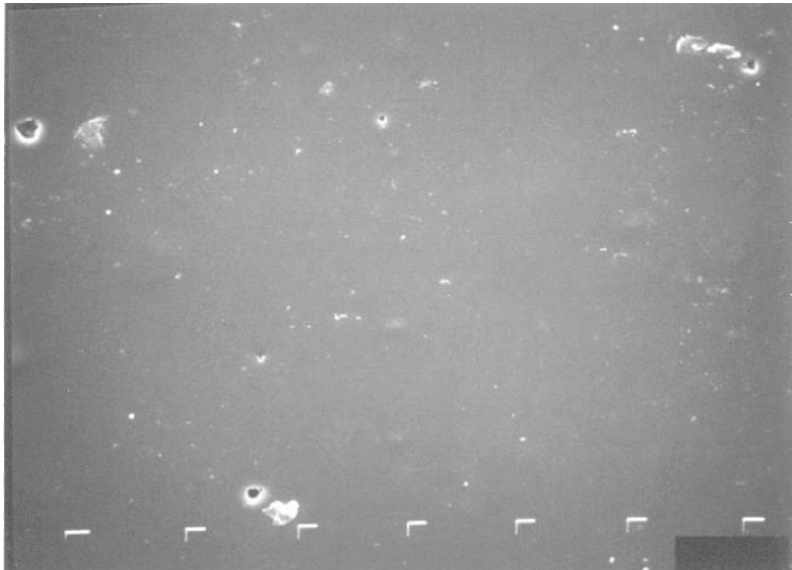


Photo credit: DeLaval

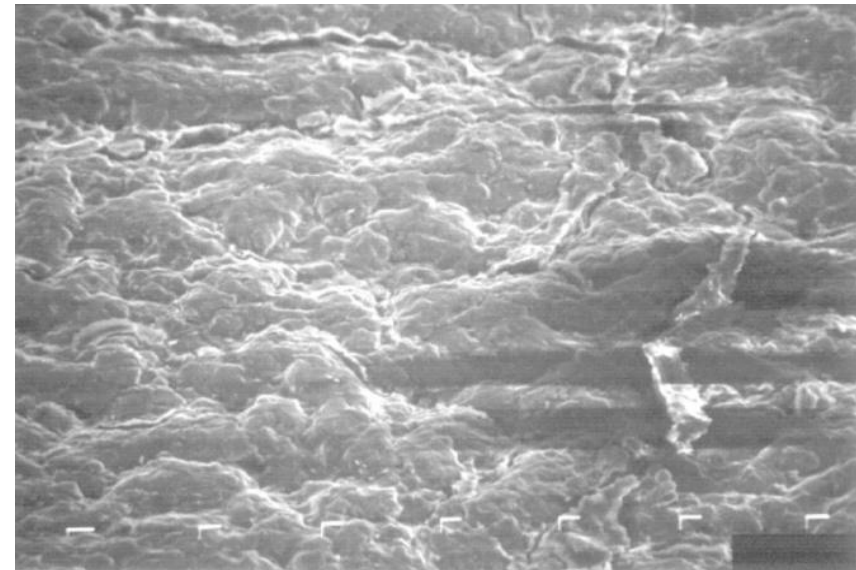


Photo credit: DeLaval

Service of the milking system – pulsators

- What is the protocol when a cow kicks a machine into pieces?
- How often should a pulsator be checked?



SEGES

Photo credit: DeLaval



Milking hygiene



SEGES



Ensuring the milk flow by proper milking routines



Check the result



TEAT CLEANLINESS SCORING CHART

Score the teat hygiene on a scale of 1 to 4 using the criteria and pictures below.
Place an X in the appropriate box of the table and
count the number of marked boxes under each picture.

DATE: _____
FARM: _____
N° PEN: _____

| Score 1 Free of dirt or manure | Score 2 Slightly covered with dirt/manure | Score 3 Moderately covered with dirt/manure | Score 4 Mostly covered with dirt/manure |
|--|---|--|--|
|  |  |  |  |

| | | | | | | | | | | | | | | | | | | | |
|----|----|----|----|----|----|----|----|----|----|----|----|----|----|----|----|----|----|----|----|
| 1 | 2 | 3 | 4 | 5 | 1 | 2 | 3 | 4 | 5 | 1 | 2 | 3 | 4 | 5 | 1 | 2 | 3 | 4 | 5 |
| 6 | 7 | 8 | 9 | 10 | 6 | 7 | 8 | 9 | 10 | 6 | 7 | 8 | 9 | 10 | 6 | 7 | 8 | 9 | 10 |
| 11 | 12 | 13 | 14 | 15 | 11 | 12 | 13 | 14 | 15 | 11 | 12 | 13 | 14 | 15 | 11 | 12 | 13 | 14 | 15 |
| 16 | 17 | 18 | 19 | 20 | 16 | 17 | 18 | 19 | 20 | 16 | 17 | 18 | 19 | 20 | 16 | 17 | 18 | 19 | 20 |
| 21 | 22 | 23 | 24 | 25 | 21 | 22 | 23 | 24 | 25 | 21 | 22 | 23 | 24 | 25 | 21 | 22 | 23 | 24 | 25 |

Teat dip after milking – why?



Clean with foam



Photo credit: Lely

What does a low cell count mean?

- Example: a forth-time calving cow provides 2 L of milk extra a day by having a cell count on 50,000 vs. 300,000
- A low cell count
 - Fewer treatments
 - Fewer bucket cows
 - Less work
 - Lower risks
- A proper cell count is $> 50,000$ of a first-time calving cow

5 take home messages on how to improve the udder health at your herd

1. Clean cows and clean milking equipment
2. Analyzing the milk so we know what is going on
3. Keep the milking system in a good condition and regular service
4. Evaluate milking routines, teat conditions and milk system settings routinely
5. Use the milk flow data from systems and DMS every day

We are making food!



SEGES

