

The Interreg Baltic Sea Region Programme 2014 – 2020

**R094 Water driven rural development in the Baltic Sea Region
(WATERDRIVE)**

MINUTES

LAT Partners Meeting

Jelgava

Date: 14.05.2019.

Venue: Jekabnieki village, Svete parish, Jelgava Local Municipality

Agenda: examination of Svete river pilot area in Jelgava Local Municipality administrative territory

Time: 13:00 – 16:00

Participants: Project Partners

PP11 Jelgava Local Municipality:

Kristine Beitane

Ingars Rozitis

PP12 Latvia University of Life Sciences and Technologies:

Ainis Lagzdins

Kaspars Abramenko

PP13 Union Farmers' Parliament:

Zanda Melnalksne

Stakeholder, farmer

Juris Razživins

Figure 1: LAT partners [14.05.2019.]



On May 14th, 2019. WATERDRIVE Latvian partner meeting was organized by Jelgava Local Municipality PP11. It took place in Jekabnieki, Svete parish, Jelgava Local Municipality choosing/ examining pilot areas on River Svete watershed.

Four palces had been selected as pilot areas: 2 territories (2 land plots) belong to Jelgava Local Municipality: one of them is ~15 ha large (*Figure 2*) and second consists of two parts: ~2 ha and ~7 ha large (*Figure 6*). Both territories are located in a flooded area. And other two pilot areas belongs to land owners (divided among several landowners) (*Figure 8, Figure 9*).

The River Svete and its floodplain meets the requirements of specially protected nature territories. All meadows in River Svete watershed are clasified as European Union protected habitats, but any case all meadows require management.

LOCATION/ PILOT AREA NR.1

Figure 2: Pilot area Nr.1 map

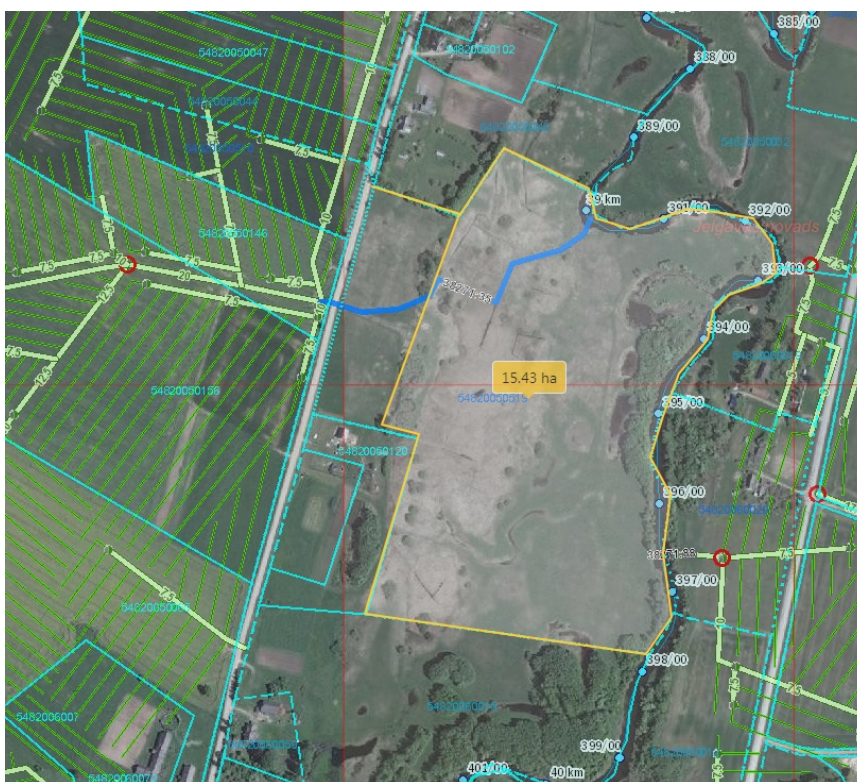


Figure 3: Pilot area Nr.1. image_1 [14.05.2019.]



Territory belongs to Jelgava Local Municipality. During the spring floods and also sometimes due to autumn rainfall this land is completely flooded. Currently, this land is not managed. Drainage from agricultural lands is redirected to the river floodplain (*Figure 4 and Figure 5*).

Figure 4: Pilot area Nr.1. image_2 [14.05.2019.]



Figure 5: Pilot area Nr.1. image_3 [14.05.2019.]



Possible actions:

- preservation of natural river floodplain;
- mowing of reeds and shrubs to promote natural regeneration of meadows (biological diversity should be considered);
- possible/ potencial municipal land (*flood area*) tenants – agricultural landscape, grazing etc.;
- restoration of the ditch network for better humidity control during the vegetation period.

LOCATION/ PILOT AREA NR. 2

Figure 6: Pilot area Nr.2 map



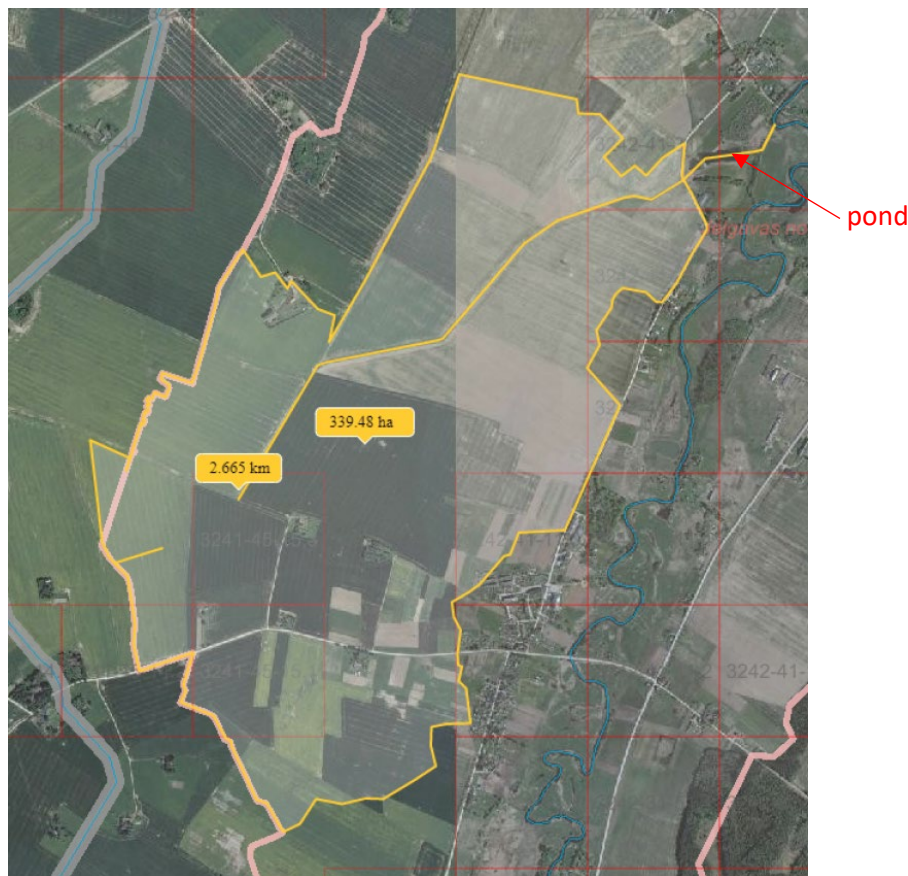
Territory belongs to Jelgava Local Municipality - flooded area. Possible actions: mowing of reeds and shrubs to promote natural regeneration of meadows (biological diversity should be considered); possible/ potencial municipal land (*flood area*) tenants – agricultural landscape, grazing etc.; a suitable place to locate green environmental construction on a shared ditch.

Figure 7: Pilot area Nr.2. image [14.05.2019.]



LOCATION/ PILOT AREA NR. 3

Figure 8: Pilot area Nr.3 map



This pilot area is the largest territory divided among several landowners. Here we are planning to establish a focus group. This place is also suitable for collective approach activities for water management, e.g. ditch management, which is more than 2 km long. The ditch passes through the pond and flows into the river. This pond could be used as a showcase for water quality monitoring activities where a potential for nutrient and sediment retention could be evaluated. It would be valuable to assess the monitoring results and compare water quality coming out of the drainage system through the pond to the Svete River.

For the collective approach the best output would be cleaning up the ditch through land owners/ farmers cooperation. It would require personal investments, but municipality would assess the possibility of tax relief.

Possible actions:

- Increased knowledge and openness of farmers'/ land owners' to the collective approach activities for water management practices: ditches management, drainage system construction, bufferstrips, etc.
- Farmers and local land owners in selected area and around selected area – main role in case study, possible input for design, implementation of actions and methods
- Development on the practical situation based recommendations for win-win solutions on agricultural land management (Payment based support).

LOCATION/ PILOT AREA NR.4

Figure 9: Pilot area Nr.4 map



In this territory we could talk to the owner about the natural restoration of the river bank by attracting hydrobiologist. Maybe it would be possible to manage restoration of the particular river section, with approval of environmental services. The concept of cooperation between municipality and land owner could be following: the municipality provides planning component within the activities, but the landowner's contribution is practical implementation. Since the Svete River is a public water body, this form of cooperation could be far-reaching in relation to the plans of the ministry to initiate the involvement of land owners and municipalities in the management of public water.

Figure 10. Pilot area Nr.4. image [14.05.2019.]



Downstream the total overgrowth in the river banks becomes more obvious – the stream becomes very narrow with dense reed stands on the way (*Figure 10, Figure 11, Figure.12*).

Figure 11: Svete_river image_1 [14.05.2019.]



Figure 12: Svete_river image_2 [14.05.2019.]

