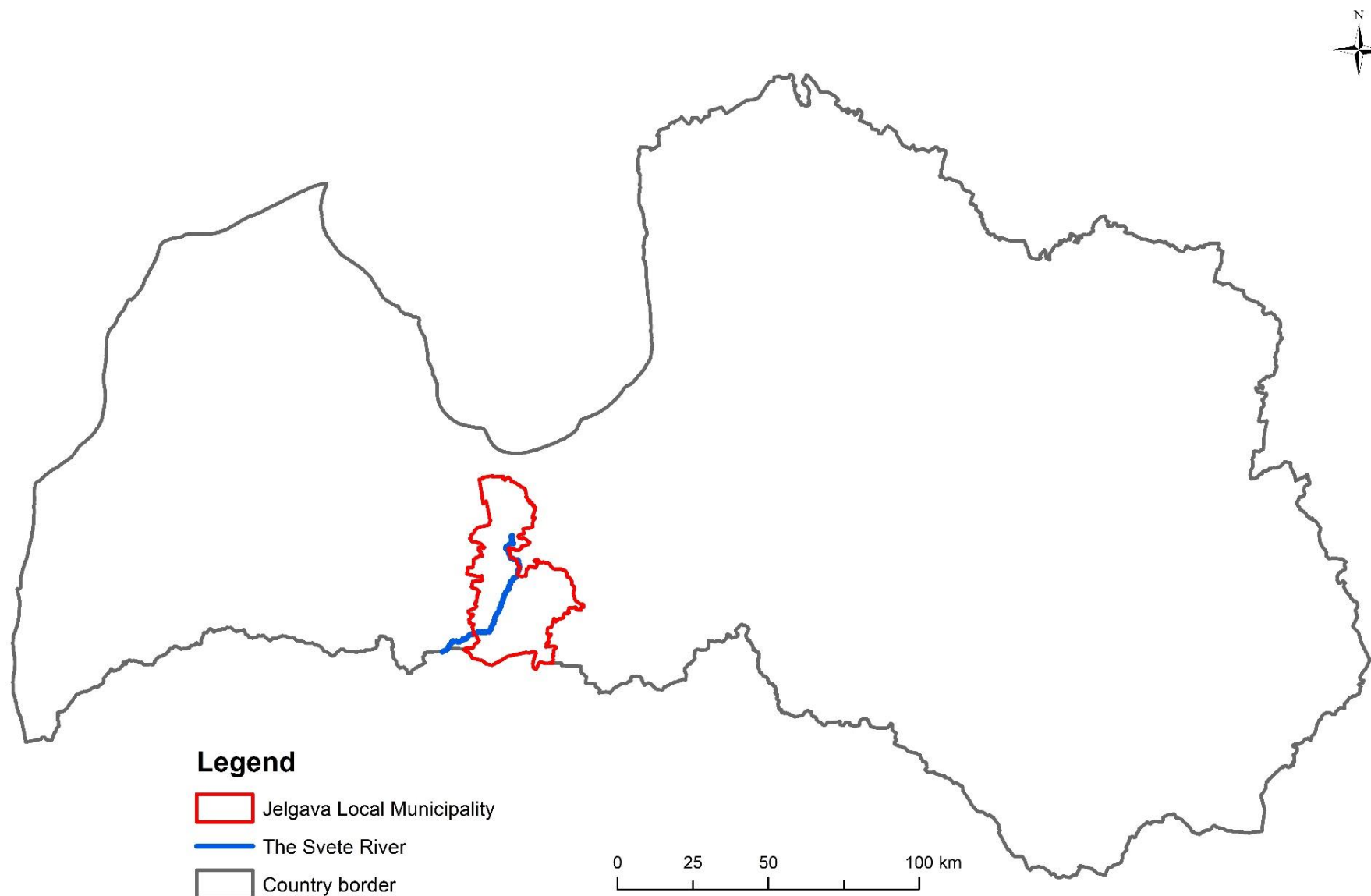
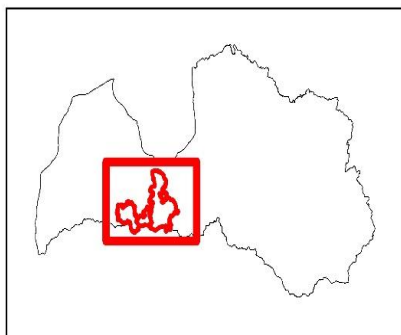


# Jelgava local municipality casea area WATERDRIVE activities

11.02.2020, Jelgava

Ingars Rozītis  
Jelgava local municipality  
drainage expert



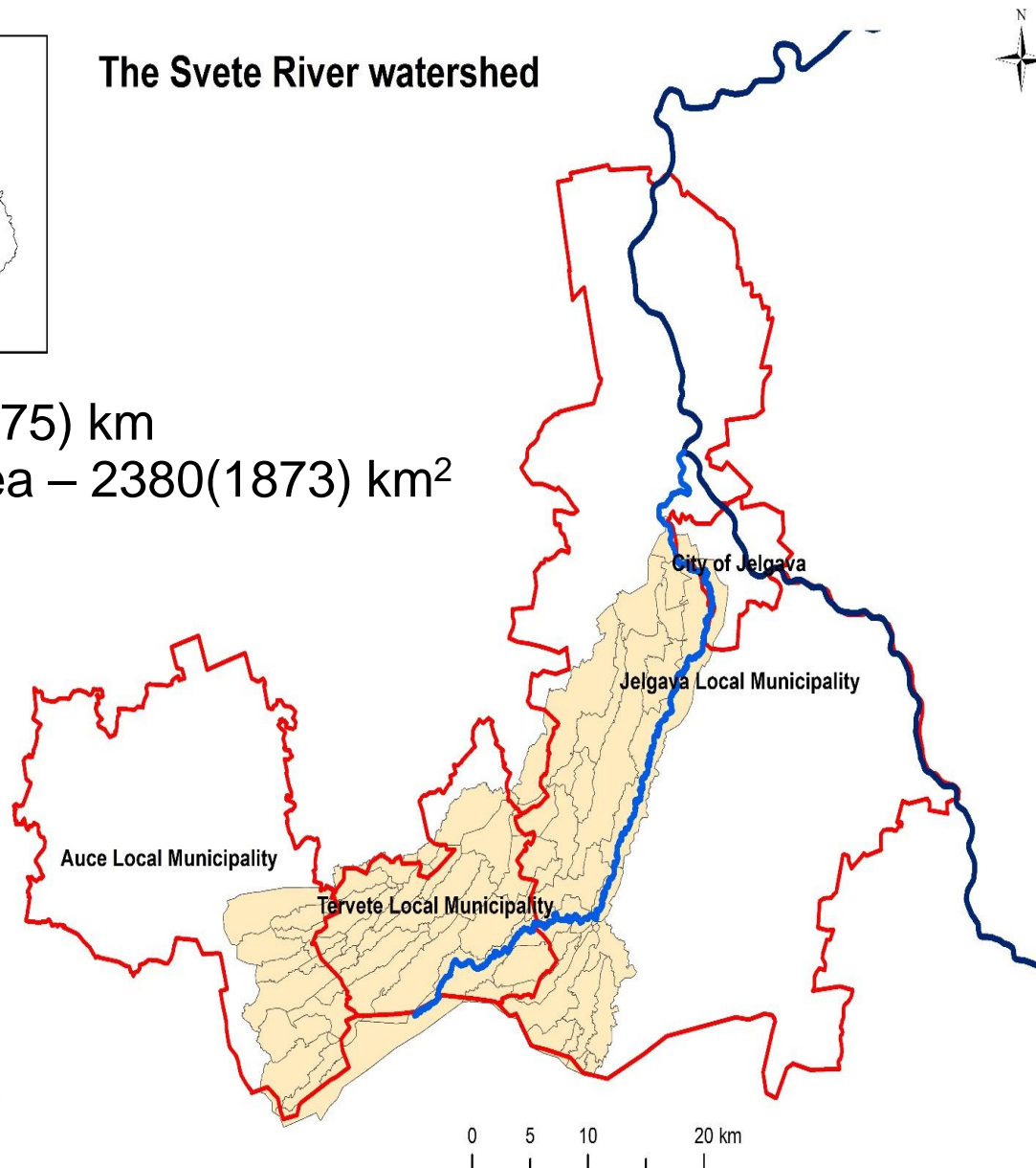


## The Svete River watershed

Length – 123 (75) km  
Catchment area – 2380(1873) km<sup>2</sup>

### Legend

-  The Svete River
-  The Lielupe River
-  Local Municipality
-  The Svete River watershed



## Objectives of the pilot case

- Evaluation of current status of the river basins with flooded meadows:
  - Situation of flooded meadows,
  - River water quality,
  - Identification of management principles and challenges
- Development on the practical situation based recommendations for win-win solutions on flooded meadow management
- More knowledge on how to introduce result - and value based support schemes. Test ideas, including collective approach, in a practical context, with farmers and local stakeholders.
- Increased knowledge and openness of farmers'/ land owners' to the collective approach activities for water management practices: ditches management, drainage system construction, bufferstrips, etc.
- Policy recommendations, on possible valuebased activities and support schemes for sustainable and responsible management of flooded meadow territories
- Developed guidelines for all involved stakeholders, for collective watercourses and flooded meadows management

## Stakeholders to be involved and their roles

- National, regional and local authorities;
- Research institutions, experts:
  - on water management and quality
  - on biological diversity
  - on economical, rural development and management aspects.
- Farmers and local land owners in selected area and around selected area – main role in case study, possible input for design, implimentation of actions and methods
- Socially active local population representatives/ “mind leaders”
- Possible/ potencial municipal land (*flood area*) tenants – agricultural landscape, grazing etc.

## Expected results of the pilot case

Developed recommendations/ policies for possible support measures for flooded meadow management:

- Payment based support

- Collective approach support

- Tax incentives

- Rental allowances for publicly owned land rent

- Etc.

Elaborated collective approach system principles for management of floodplain part of the river coastline;

Recommendations for shifting of support schemes from management based to result based

Policy recommendations for reduction of administrative burden

Recommendations for targeted placing the right measure in the right place

Increased knowledge about designing payment schemes and using digital tools and models



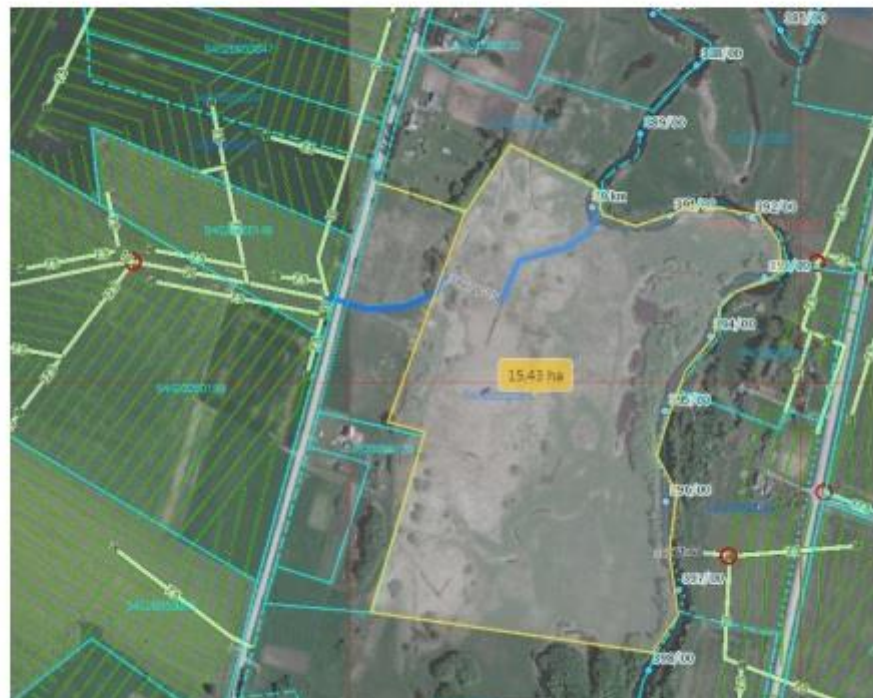
## Results so far...

- Two private land owners cleaned up the river Svete by the shoreline in their property. (municipality helped with permission documentation preparation from State Environmental service agency;
- Increased farmers interest about possibilities how to maintain floodplain in Svetete river basin – increase by 28 ha (leased municipality land), increase of income EUR 2800 per year;
- One new farmer with 60 beef cattle started farming in catchment area;
- Many owners interested in their river floodplain maintaining.



### LOCATION/ PILOT AREA NR.1

Figure 2: Pilot area Nr.1 map



### LOCATION/ PILOT AREA NR. 2

Figure 6: Pilot area Nr.2 map



Territory belongs to Jelgava Local Municipality - flooded area. Possible actions: mowing of reeds and shrubs to promote natural regeneration of meadows (biological diversity should be considered); possible/ potencial municipal land (flood area) tenants – agricultural landscape, grazing etc.; a suitable place to locate green environmental construction on a shared ditch.















## Planing of actions







# *Thank You!*

Ingars Rozītis  
Jelgava local municipality  
drainage expert

e-mail: [ingars.rozitis@jelgavasnovads.lv](mailto:ingars.rozitis@jelgavasnovads.lv)