

*Waterdrive*



# CASE STUDY PROGRESS

ELVYRA MIKŠYTĖ

BALTIC ENVIRONMENTAL FORUM



EUROPEAN  
REGIONAL  
DEVELOPMENT  
FUND

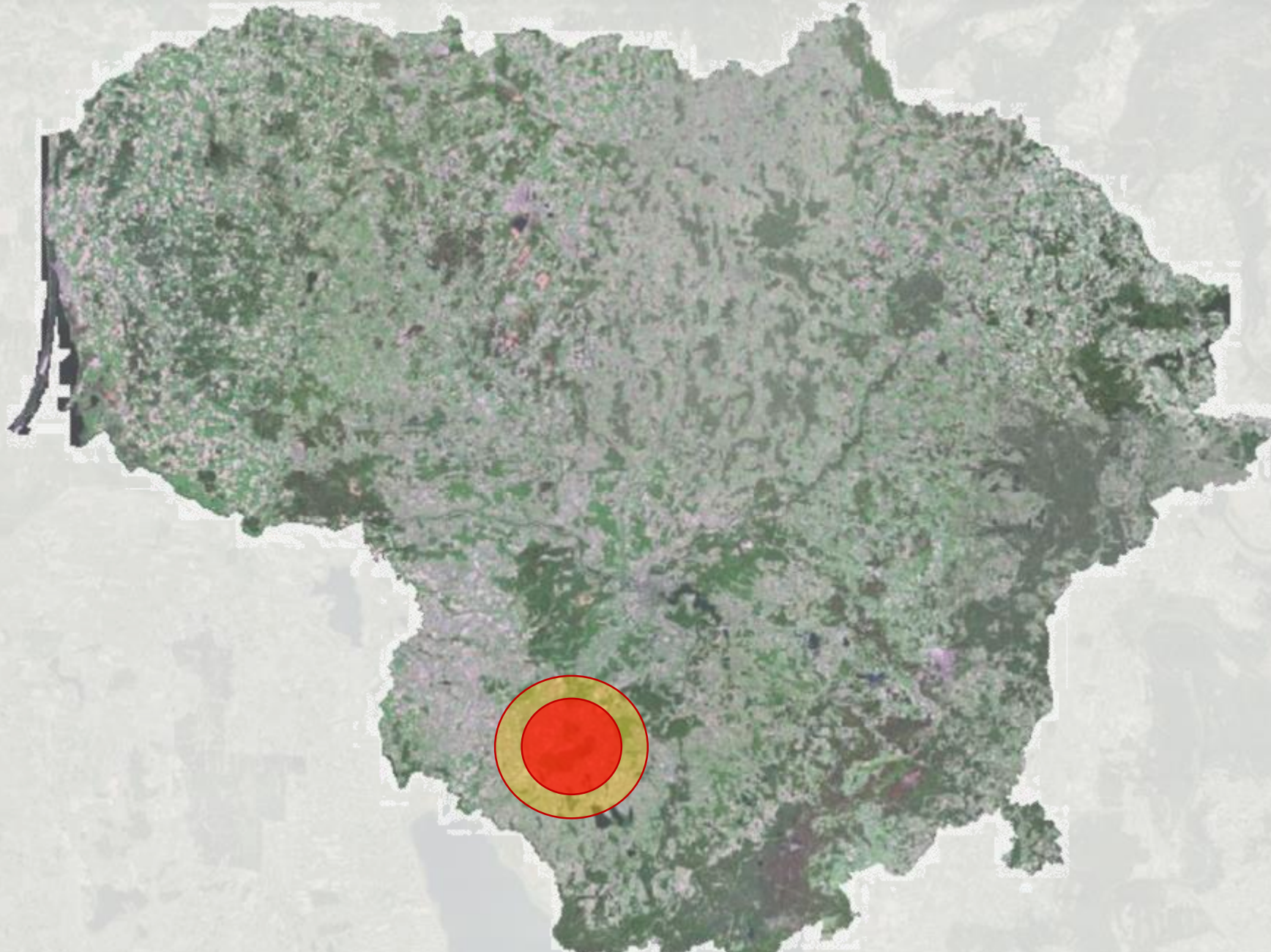
# WATERDRIVE in Lithuania

Dovinė river catchment

**Focus:**

Žuvintas Biosphere Reserve and surrounding areas







# Case study progress during 2019

- Many separate meetings with stakeholders:
  - Experts, Žuvintas BR Directorate, municipalities, ministries, people with experience and knowledge in the case area, Meteliai RP Directorate, etc.
- Searching for allies and communities
- Starting water quality measurements
- Preparation for a focus group with farmers
- Survey of municipalities and farmers

# Plans for 2020

Continue water quality monitoring and result analysis

→ Feedback results to Žuvintas BR Directorate, farmers and communities

Focus group meeting with farmers in March

→ Feedback the results from focus group to MoA for policy measures

Separate focus group with community groups

→ Feedback the results from focus groups to MoE for river basin management plans

Involving communities in events for water protection

Other stakeholder meetings to foster dialogue

# Plans forward

Finishing the monitoring programme:

- feedback the results to stakeholders, farmers and communities
- develop recommendations for further monitoring and financial resources needed

Develop WATERDRIVE recommendations on water management in the case area