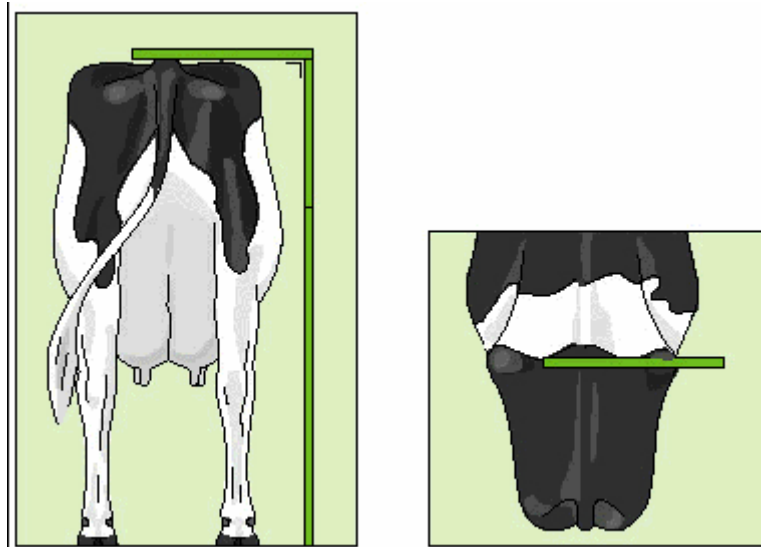


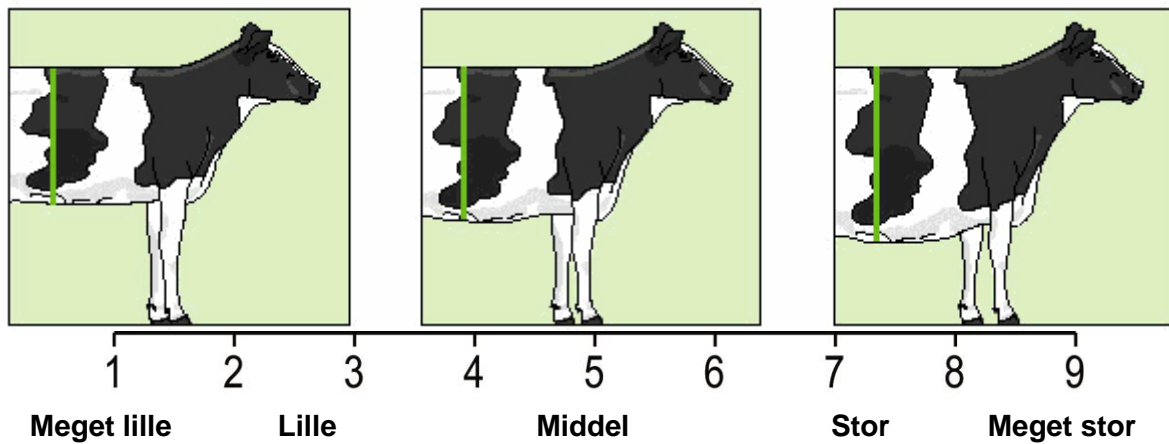
Lineær bedømmelse - Tegninger

Krop

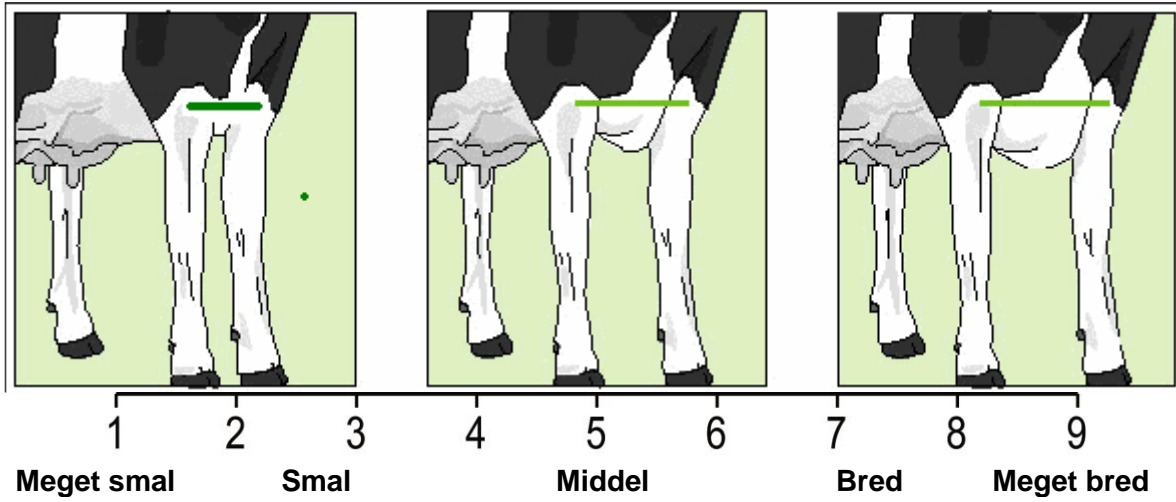
Krydshøjde



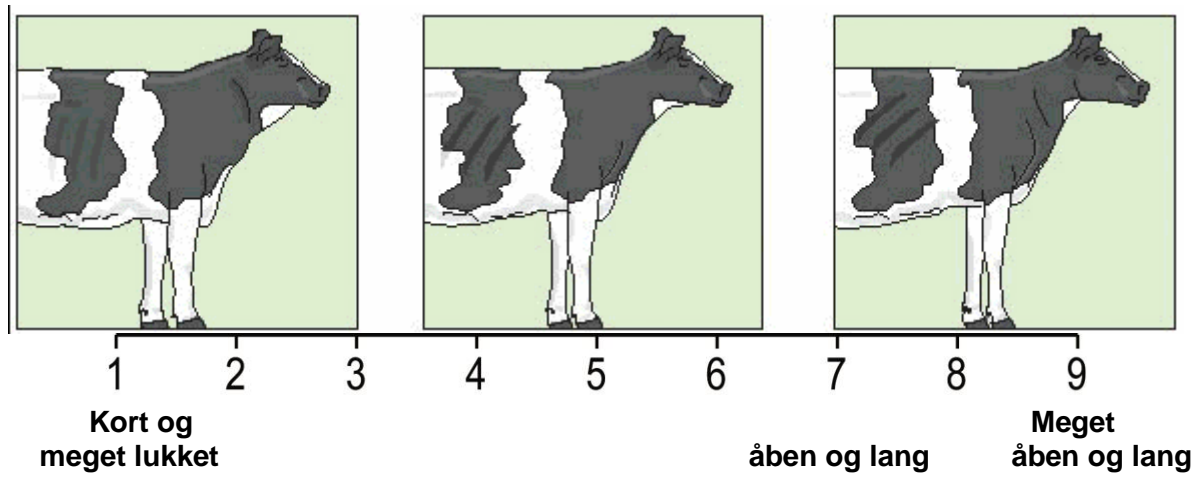
Kropsdybde



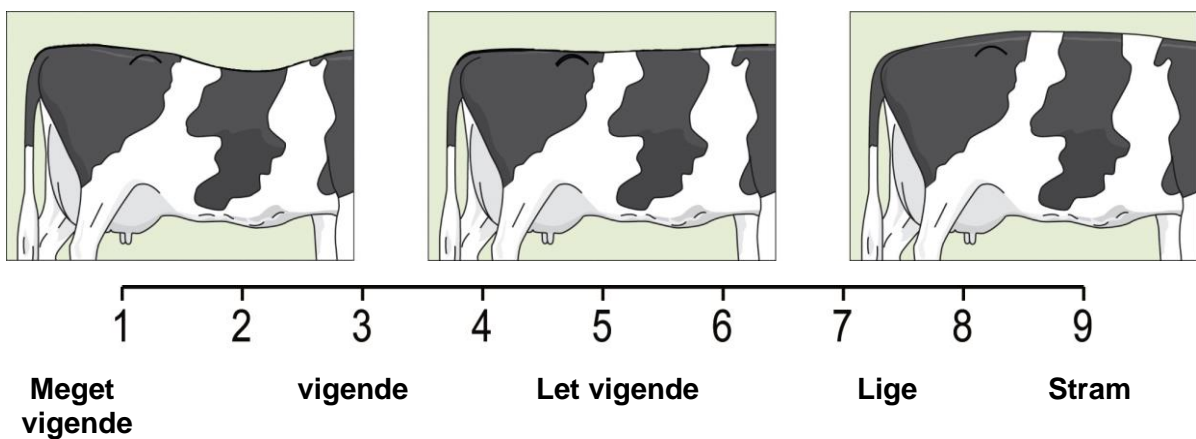
Brystbredde



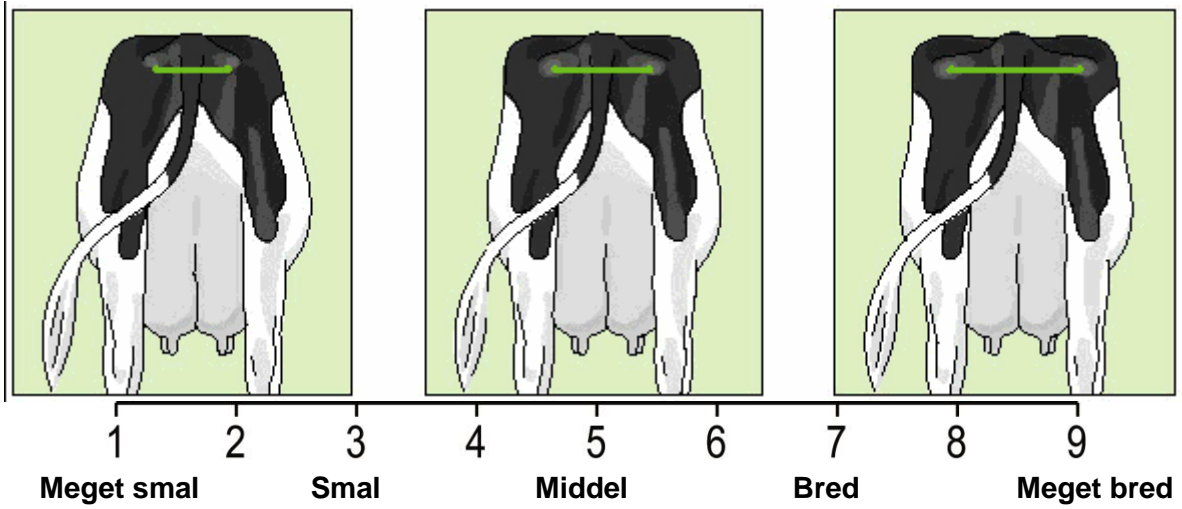
Malkepræg



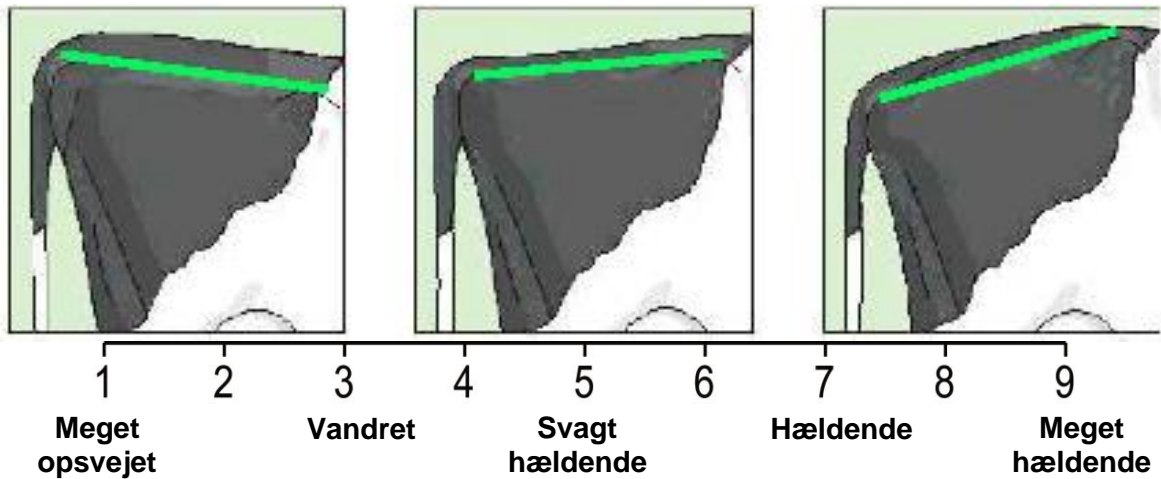
Overlinie



Krydsbredde

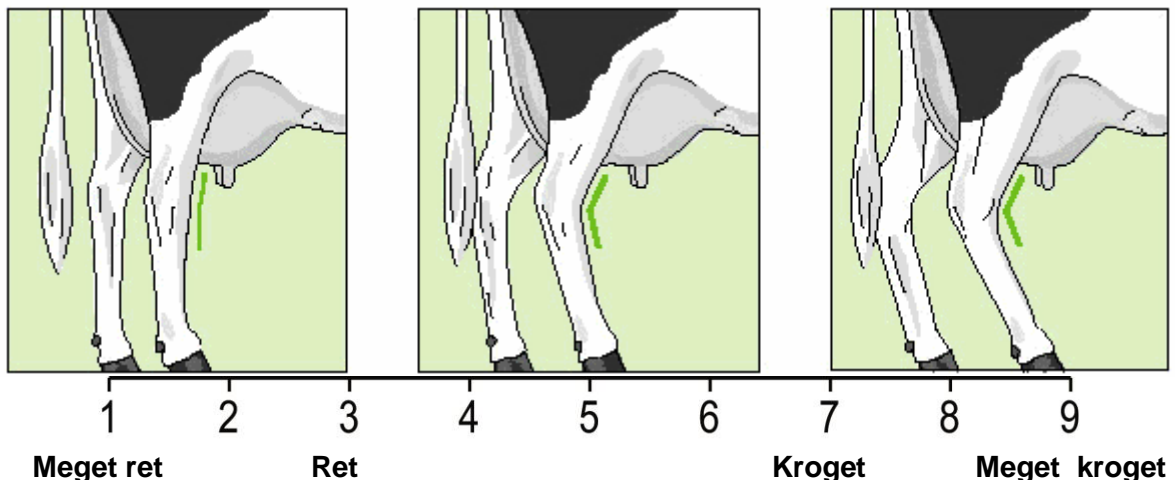


Krydssets retning

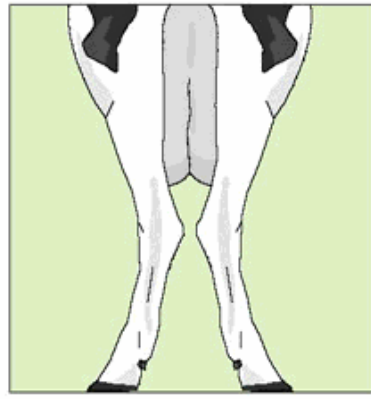


Lemmer

Hasevinkel fra siden

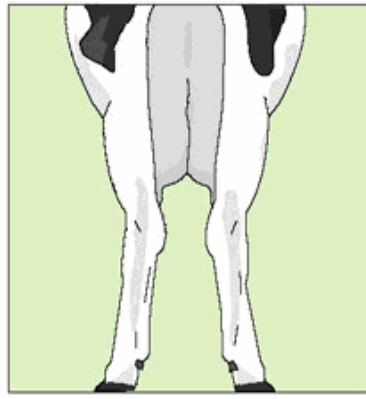


Hasestilling bagfra



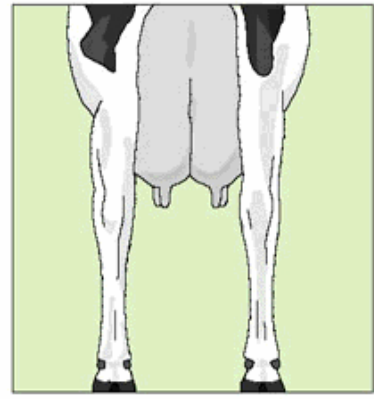
1

Meget tætstillede



4

Noget tætstillede



7

Næsten parallelle

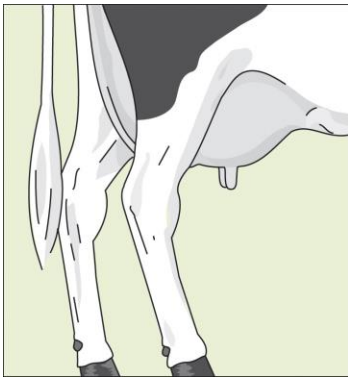
8

Parallelle

9

Hjulbenet

Hasekvalitet



1

Meget brusk-/væskefyldt



4

Noget brusk-/væskefyldt



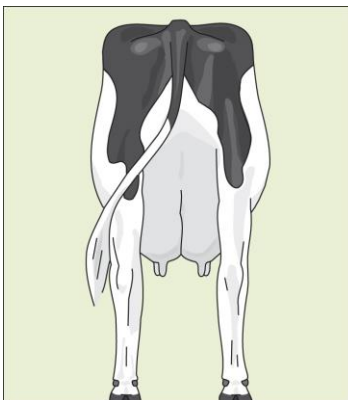
7

Lidt brusk-/væskefyldt

8

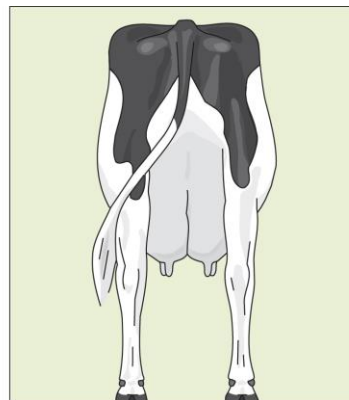
"Ren og tør"

Knoglebygning



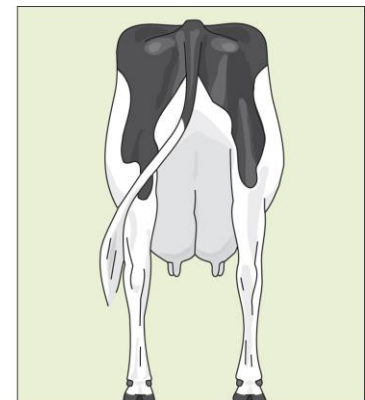
1

Meget grov



4

Grov



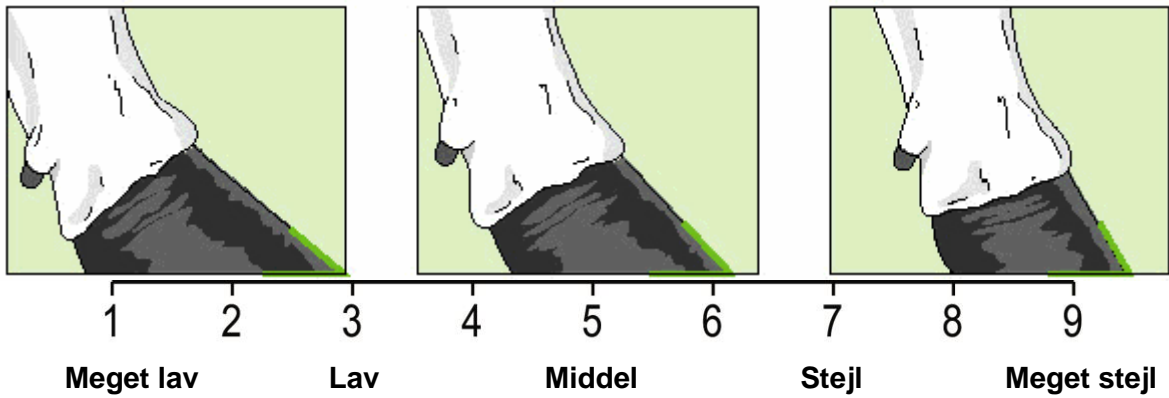
7

Fin

8

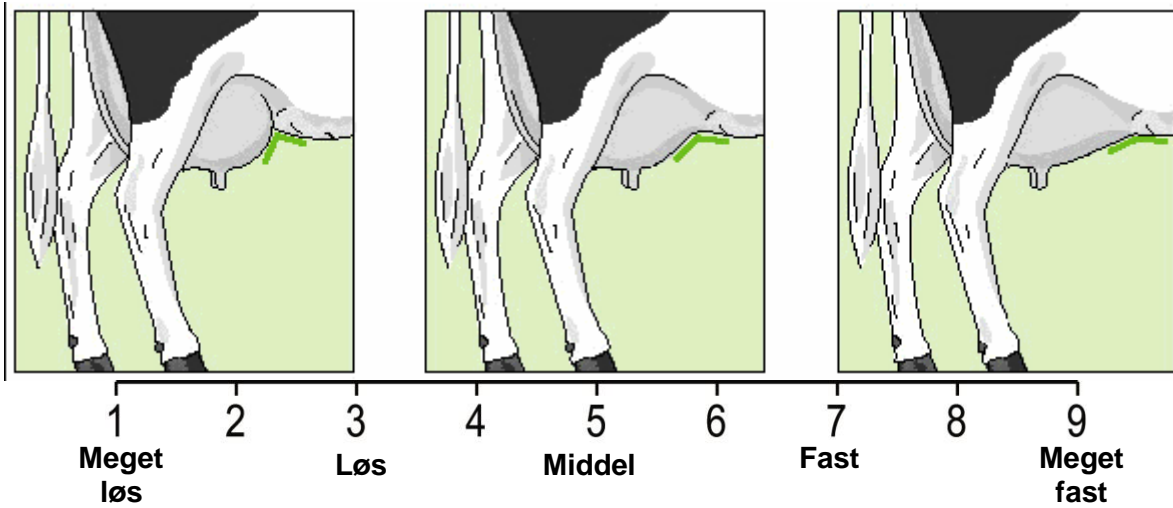
Meget fin og tynd

Klovhældning

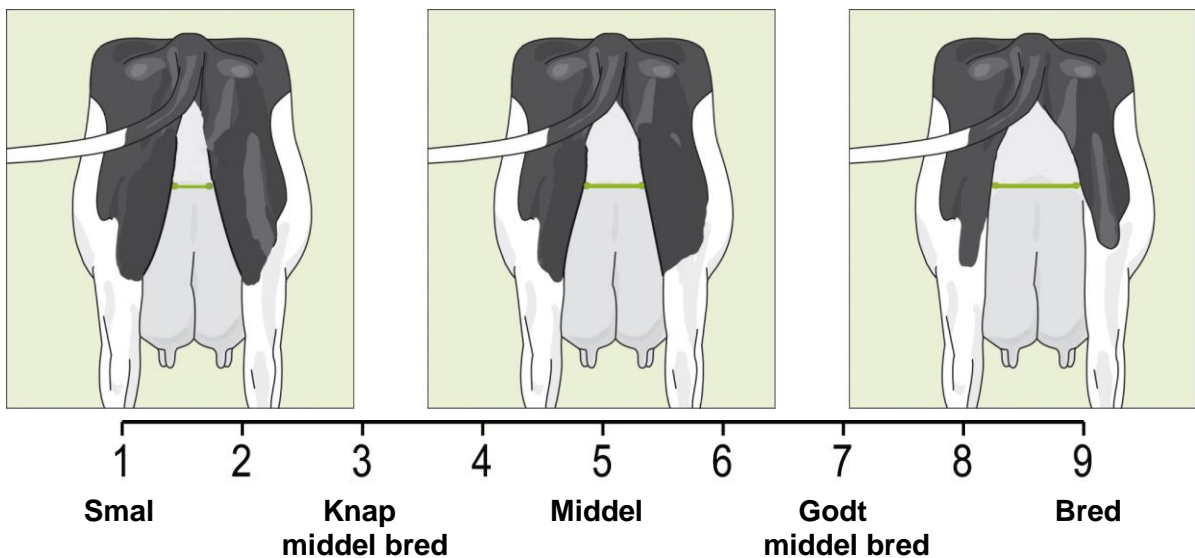


Malkeorganer

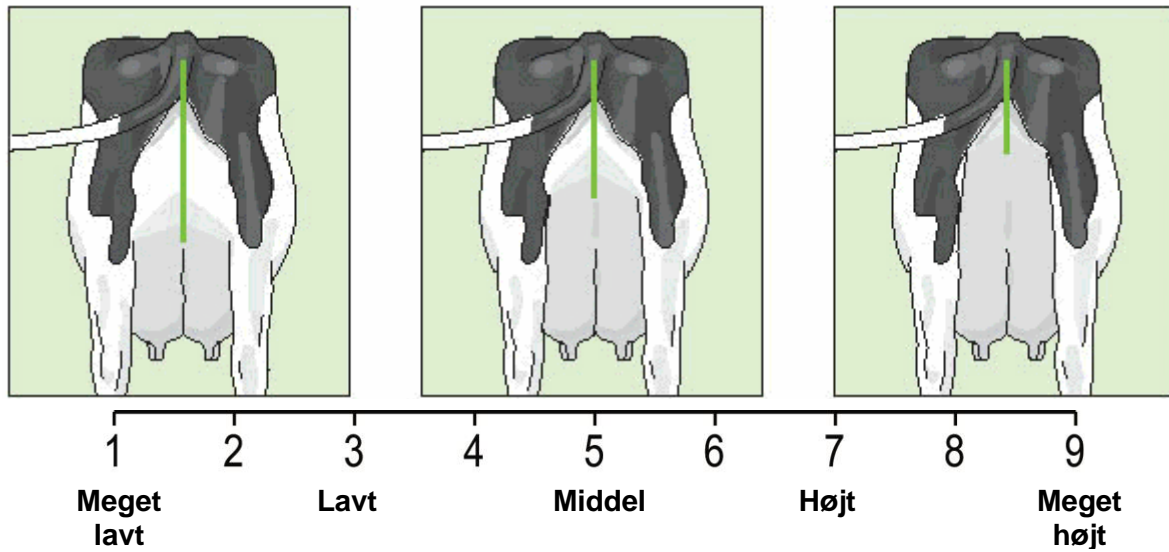
Foryvertilhæftning



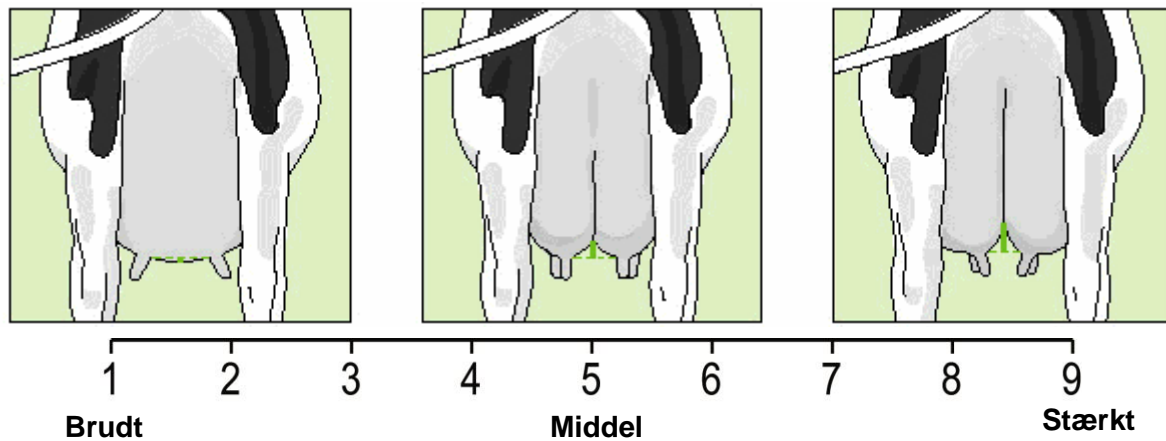
Bagyverbredde



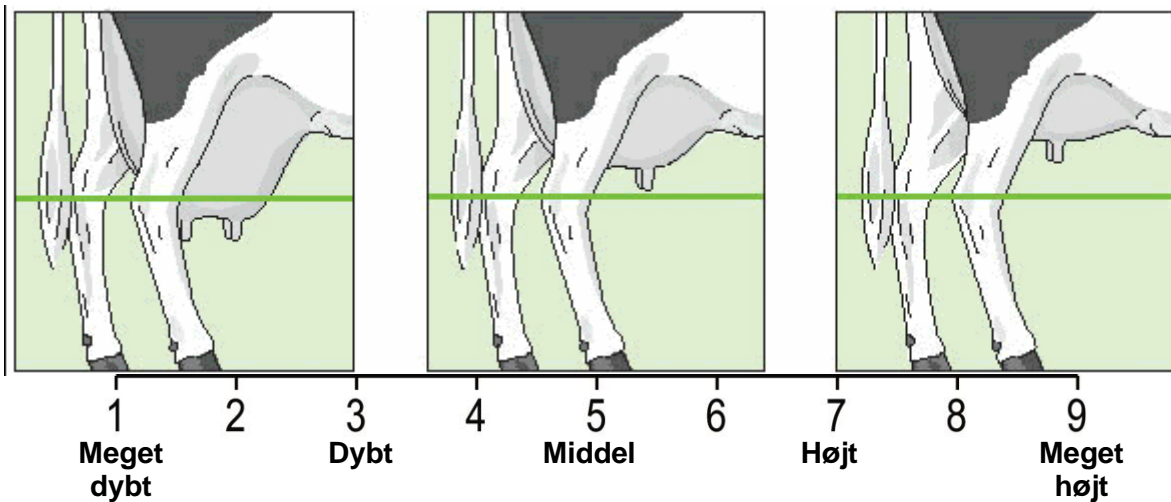
Bagyverhøjde



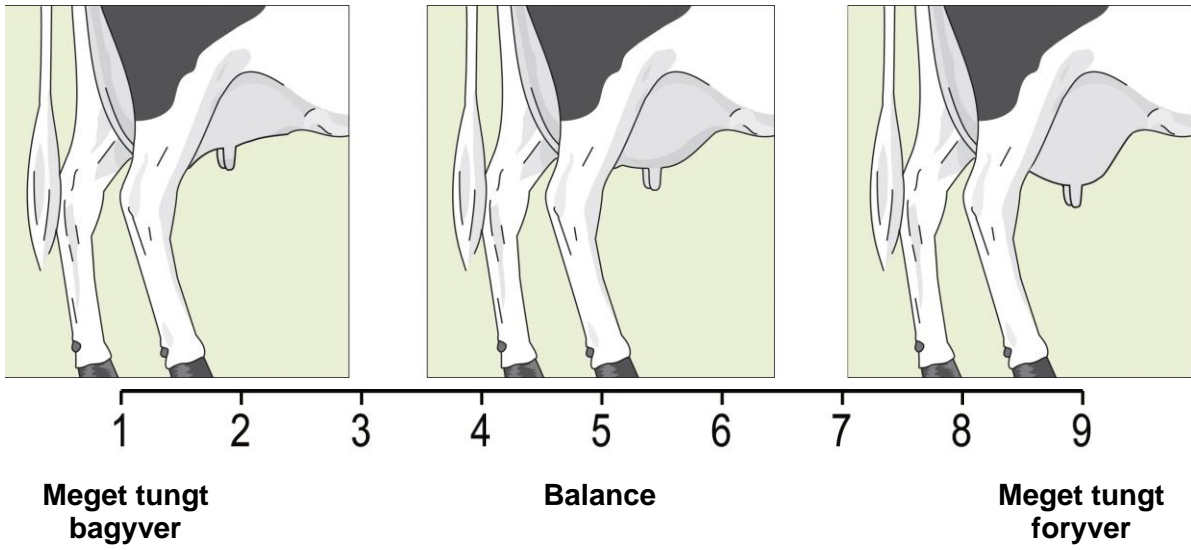
Yverbånd



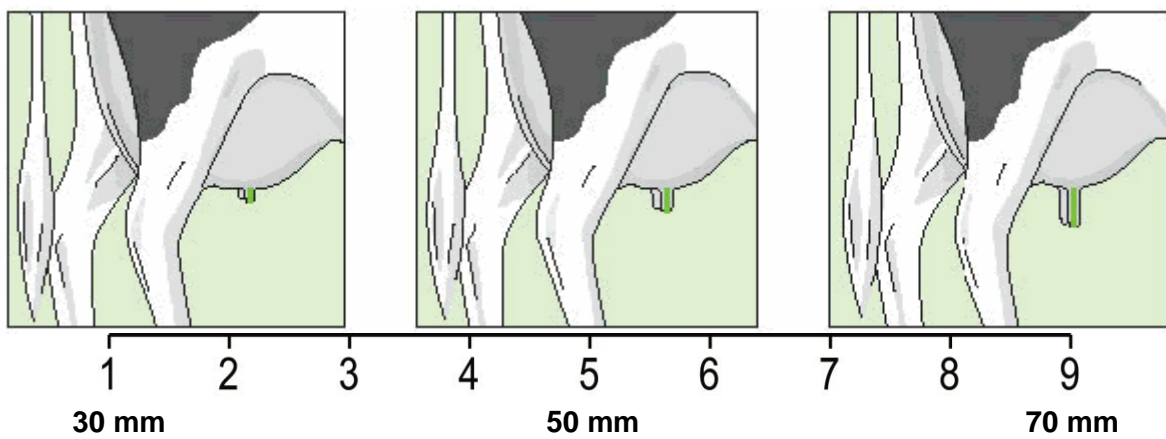
Yverdybde



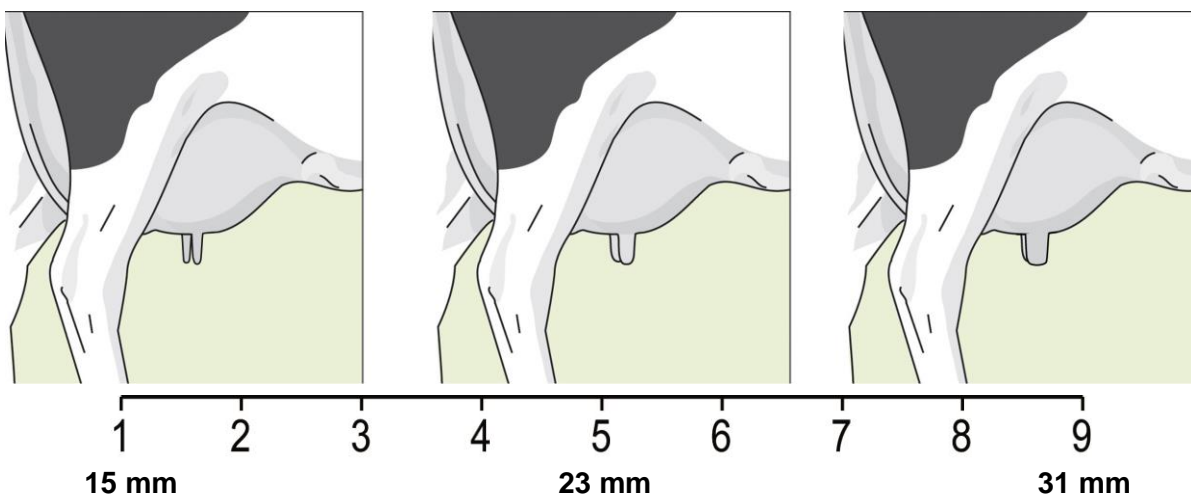
Yverbalance



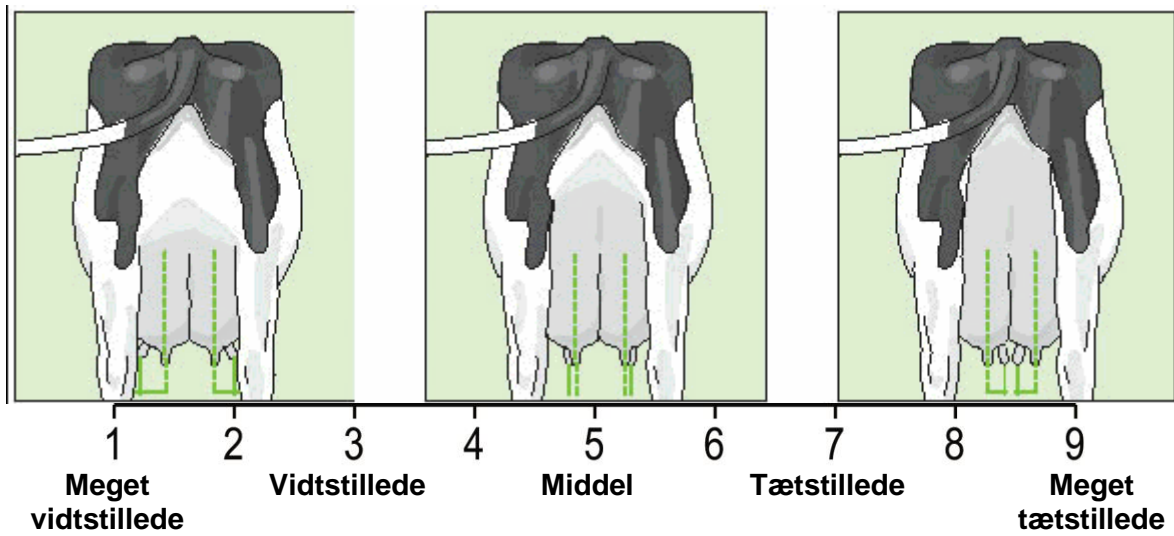
Pattelængde



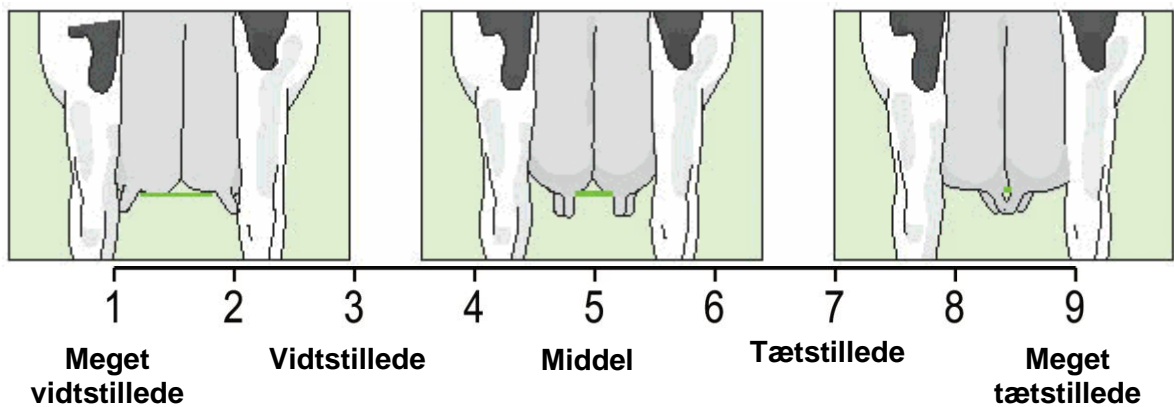
Pattetykkelse



Forpateeafstand



Bagpateeafstand



Huld

