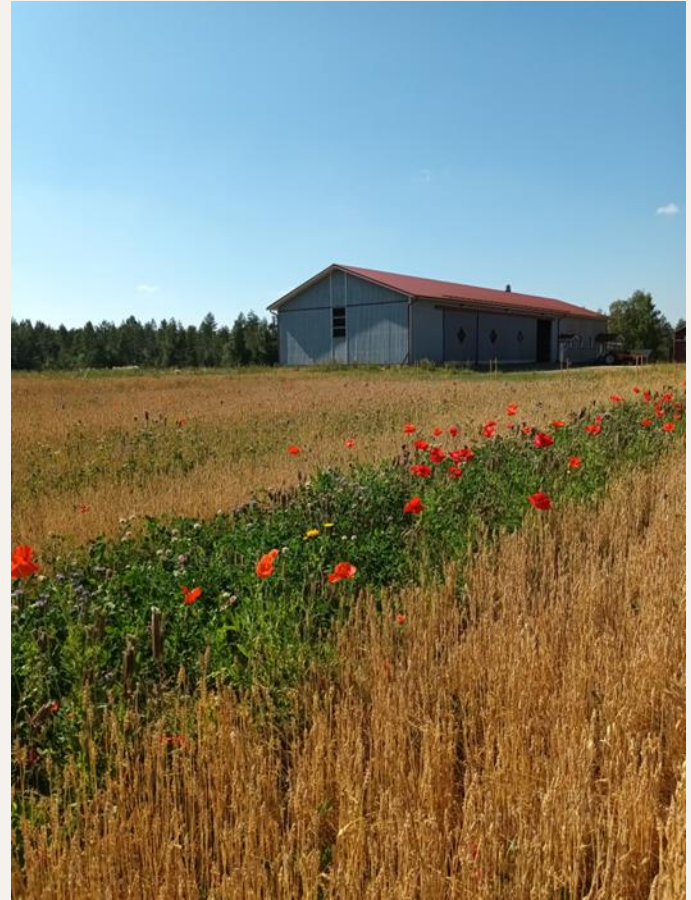




PURSILA FARM

- Located in Hausjärvi,
- 1985-2013, beef cattle
- 2013-2021, spring cereals
- In 2021, I started farming
- The main crops include grass, oats, spring wheat, oil hemp, and field beans.
- Cover crops are also utilized.
- Apple and pear trees
- Livestock is pastured, including 20 cattle and 6 sheep.
- The farm is part of the Carbon Action pilot program.



Crops in 2021

Buffer zone (2015) (6.79 ha / 6.25 %)

Field bean (9.09 ha / 8.37 %)

Malting barley (36,78 ha / 33,86 %)

Oats (28.61 ha / 26.34 %)

Nature care grass(0.83 ha / 0.76 %)

Spring wheat (26.52 ha / 24.41 %)

Crops in 2023

Apple (0.09 ha / 0.08 %)

Black currant (0.01 ha / 0.01 %)

Catch crop (mixture) (1.63 ha / 1.5 %)

Diverse value field, pollinators and landscape (1.05 ha / 0.97 %)

Field bean (13 ha / 11.97 %)

Malting barley (4.09 ha / 3.77 %)

Nature care grass (7.62 ha / 7.01 %)

Oats (13.66 ha / 12.57 %)

Oil hemp (7.03 ha / 6.47 %)

Pasture (9.98 ha / 9.19 %)

Pear (0.03 ha / 0.03 %)

Protein crop+cereal mix (10.87 ha / 10.01 %)

Silage (18.3 ha / 16.85 %)

Spring wheat (16.97 ha / 15.62 %)

Winter wheat (4.3 ha / 3.96 %)



I was so used to the prevailing landscape and reality around me, that I couldn't imagine anything else.



The observation of nature around me began deepening my relationship to it.

And when my relationship and experience changed, my actions started to change.

