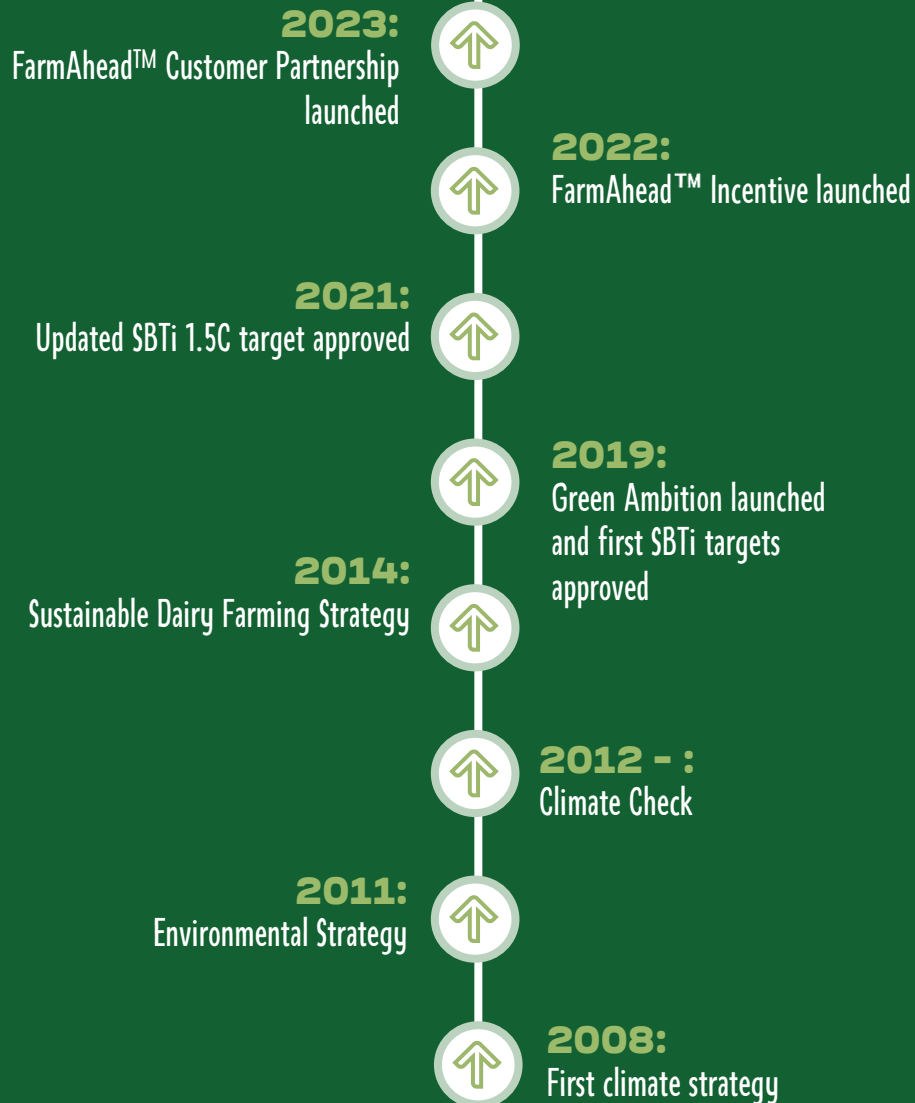


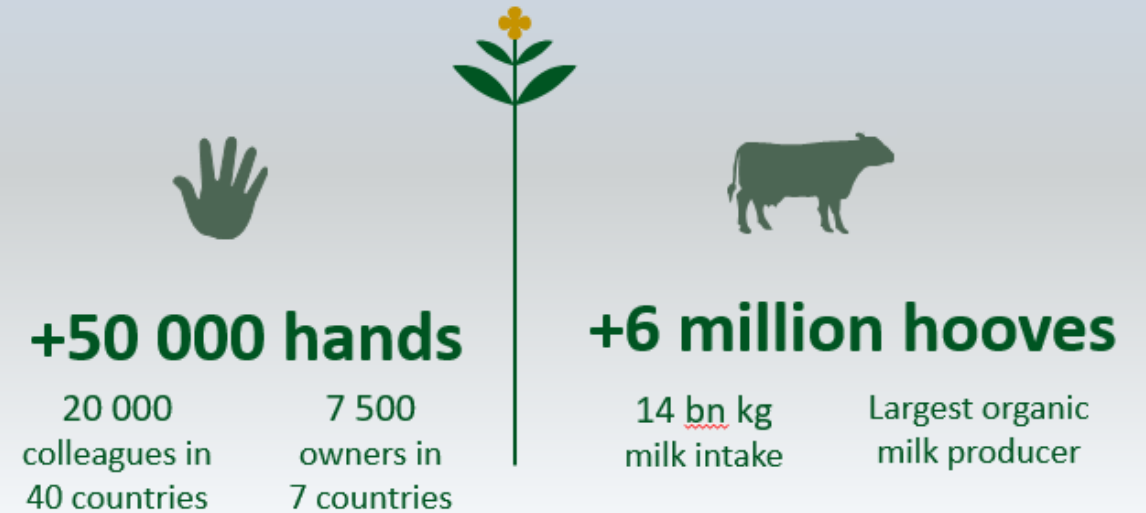
# REGENERATIVT LANDBRUG MØDER SBTI – ET FIRMAPERSPEKTIV

Anna Flysjö (PhD)  
Chief Specialist – Climate & Nature  
Global Sustainability, Arla Foods

# Arla has been committed to an ambitious sustainability agenda for many years ...



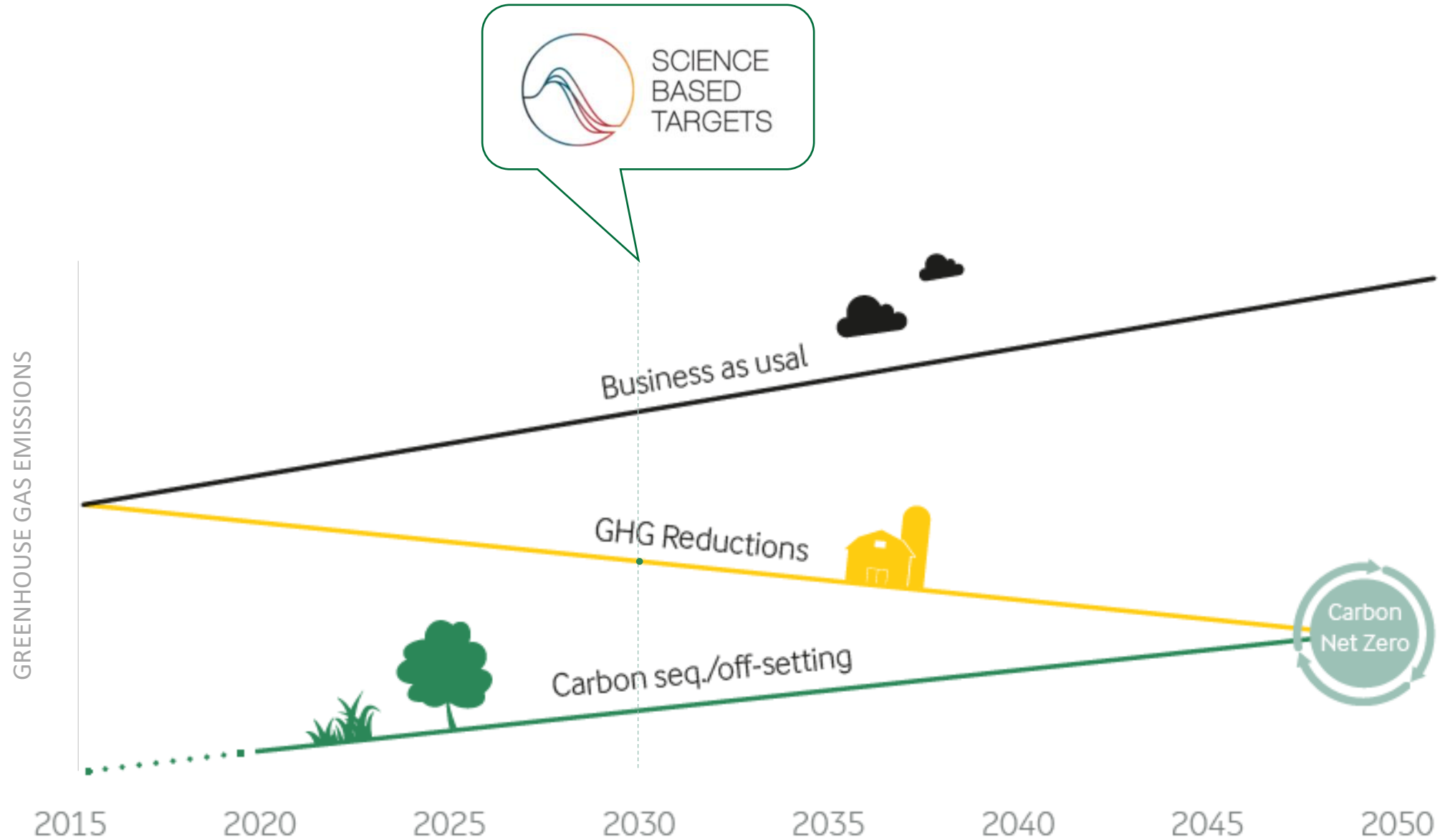
## The Dairy Cooperative Arla Foods



Sustainability is increasingly being integrated in Arla Foods.



# ARLA IS COMMITTED TO SCIENCE BASED TARGETS (2030) & CARBON NET ZERO BY 2050



# SCIENCE BASED TARGETS INITIATIVE (SBTi)



*Science-based targets provide companies with a clearly-defined path to reduce emissions in line with the Paris Agreement goals.*

*‘SBTi is the Paris Agreement for companies’*

Targets are considered ‘science-based’ if they are in line with what the latest climate science deems necessary to meet the goals of the Paris Agreement – limiting global warming to 1.5°C above pre-industrial levels.



Partners



# ARLA HAS SET SCIENCE BASED TARGETS

## Scope 1&2:

63% absolute reduction in our own emissions (sites & transport).

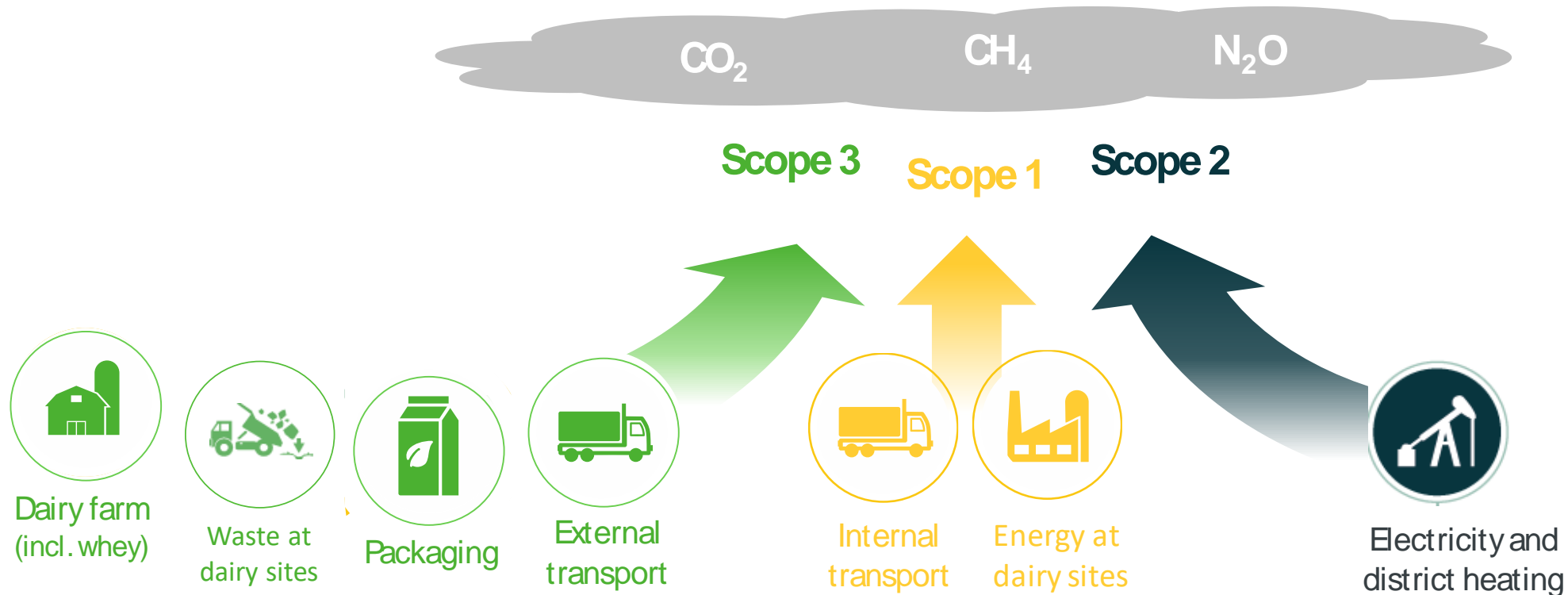
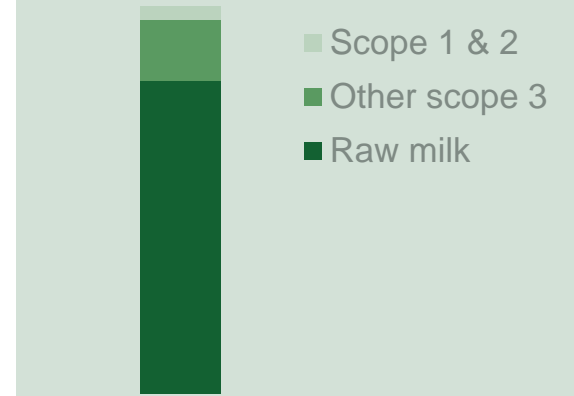
Status 2023: -33%

## Scope 3:

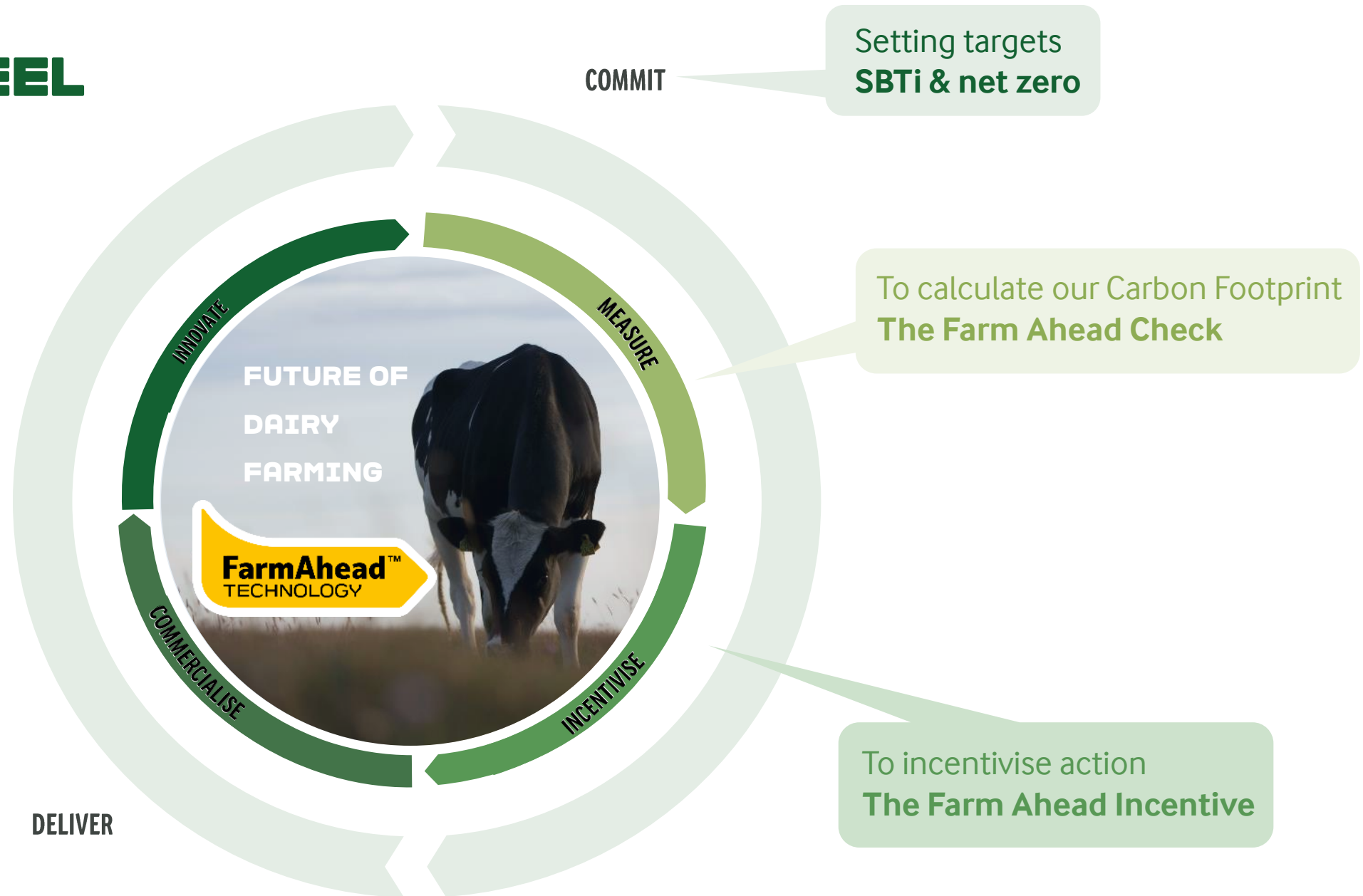
30% reduction in GHG emissions intensity from our milk production, packaging and other activities (e.g. whey, waste, transport).

Status 2023: -12%

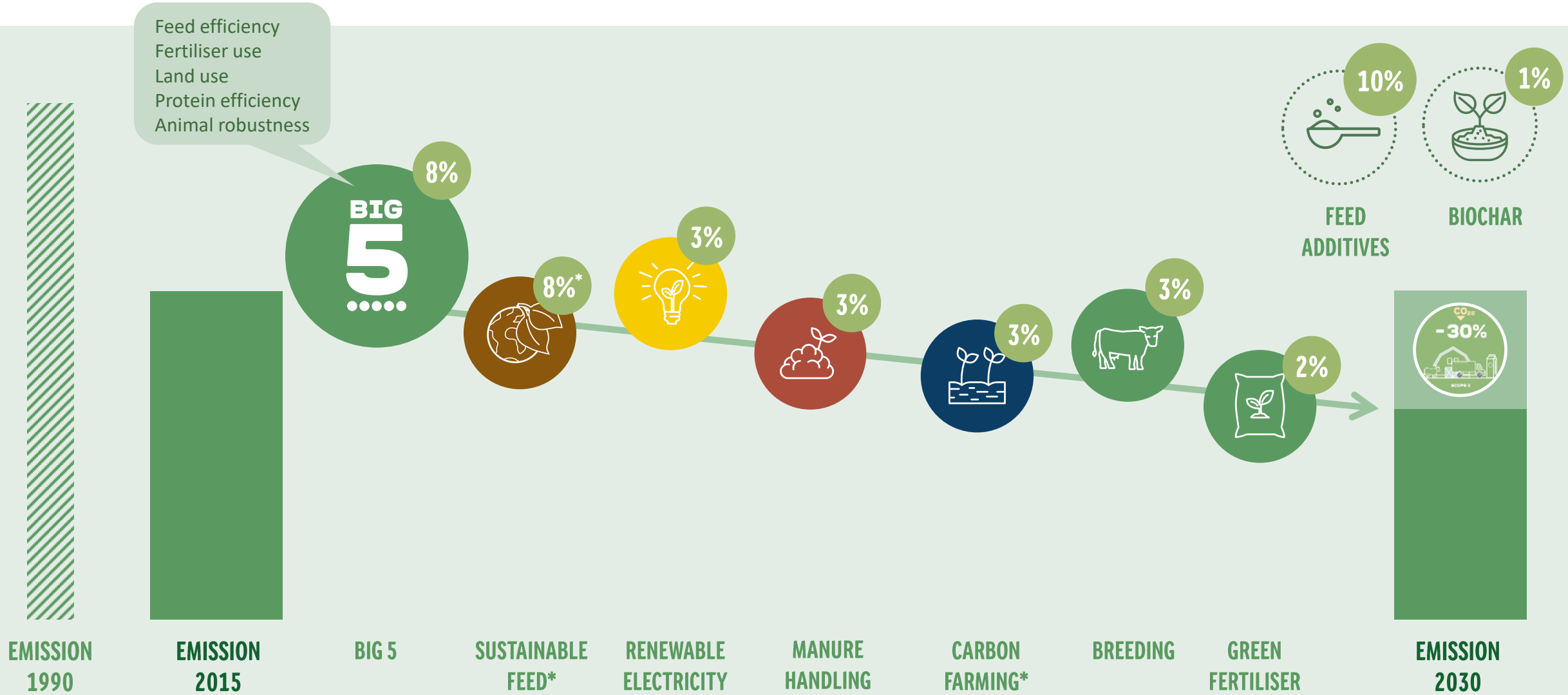
## Share of Arla's carbon footprint



# THE FLYWHEEL - HOW WE ARE DRIVING OUR CLIMATE JOURNEY



# ARLA's CARBON FARM ROADMAP



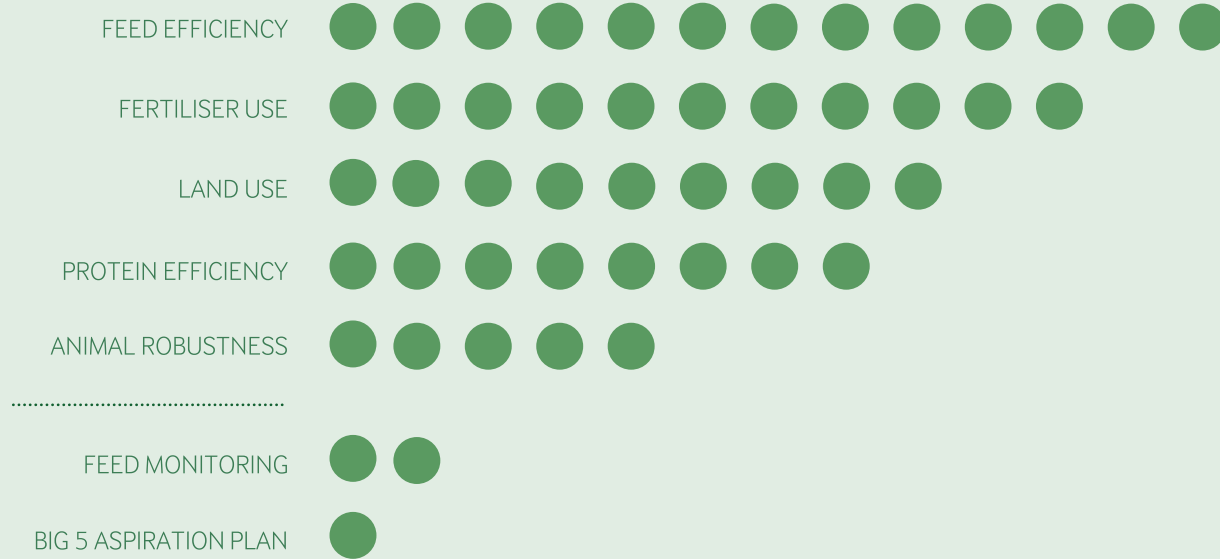
\*Requires direct Land Use Change (dLUC) and carbon sequestration to be included in the Science Based Target and the 2015 baseline to be updated accordingly

# ARLA'S FARM AHEAD INCENTIVE MODEL: REWARDING THE ACTIONS THAT HAVE THE MOST POSITIVE IMPACT ON CLIMATE/SUSTAINABILITY



Each point leads to 0.03 eurocent on the milk price.

## 5 BIG 5 (49 PTS)



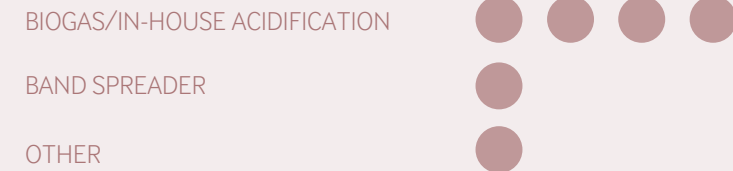
## ● SUSTAINABLE FEED (11 PTS)



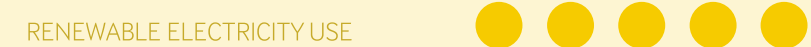
## ● BIODIVERSITY & CARBON FARMING (8 PTS)



## ● MANURE HANDLING (6 PTS)



## ● RENEWABLE ELECTRICITY (5 PTS)



## ● KNOWLEDGE BUILDING (1 PT)

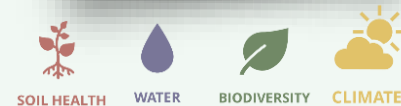




# THE FUTURE FIT DAIRY INITIATIVE A PRE-COMPETITIVE INDUSTRY COLLABORATION

“DEMONSTRATING DAIRY CAN  
CONTRIBUTE TO NOURISHING  
COMMUNITIES WHILST OPERATING  
WITHIN PLANETARY BOUNDARIES.  
GIVING OUR PLANET MORE  
THAN IT TAKES “

- 05 Companies in the dairy value chain
- 08 Countries across North-West Europe
- 40 Farmers to start testing the approach



Building on the work of SAI Platform's  
“Regenerating Together” Program  
launched in Sept’23

- ✓ Industry aligned definition for regenerative agriculture.
- ✓ Science based global framework for how to select, measure and report on regenerative outcomes.
- ✓ Verification of maturity level for delivering regenerative approach.

# STRONGER PLANET: OUR NATURE STRATEGY FRAMEWORK AGREED IN 2019 COVERS CLIMATE, AIR & WATER AND NATURE

## ARLA'S NATURE STRATEGY FRAMEWORK (GREEN AMBITION)



### BETTER CLIMATE

Our Goal  
Carbon  
Net Zero



### CLEAN AIR & WATER

Our Goal  
Nitrogen and Phosphorus  
Cycles in Balance



### MORE NATURE

Our Goal  
Increase Biodiversity  
and Access to Nature



## Reflections & summary

- Critical that companies take actions – SBTi plays an important role.
- Regenerative practices needed to fulfil our climate ambition – need to have full ‘nature’ focus.
- Focus from ‘efficiency’ to ‘resilience’.



**Our on-farm sustainability flywheel is driving the future of dairy farming**



**Thank you!**



For further information see:

[arla\\_annual-report-2023\\_uk\\_v2.pdf](#)

[https://www.arla.com/493b98/globalassets/arla-global/sustainability/climate-ambition/arla\\_201902\\_08.pdf](https://www.arla.com/493b98/globalassets/arla-global/sustainability/climate-ambition/arla_201902_08.pdf)



# Regenerativt landbrug møder SBTi

Anna Marie Thierry, Senior Sustainability Advisor,  
Sustainable Business Solutions, Beierholm

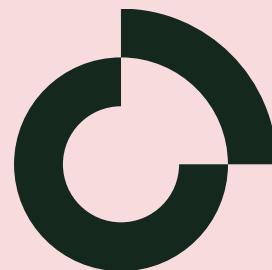
# Vi flytter mennesker og organisationer



## RÅDGIVNING

Vi hjælper og rådgiver direktioner, bestyrelser og virksomheder omkring ESG, herunder:

- Udarbejdelse af ESG strategi
- CSRD Alignment
- Due Diligence
- Double Materiality Assessment
- Politikker
- Executive briefings om ESG
- Interim ESG assistance



## RAPPORTERING

Vi understøtter hele rapporteringsprocessen fra dataindsamling til analyse og rapportering af bl.a.:

- Scope 1,2 og 3 analyse
- ESG rapportering
- Taksonomianalyse
- SBTi rapportering
- CDP rapportering
- CSRD compliance
- VSME rapportering



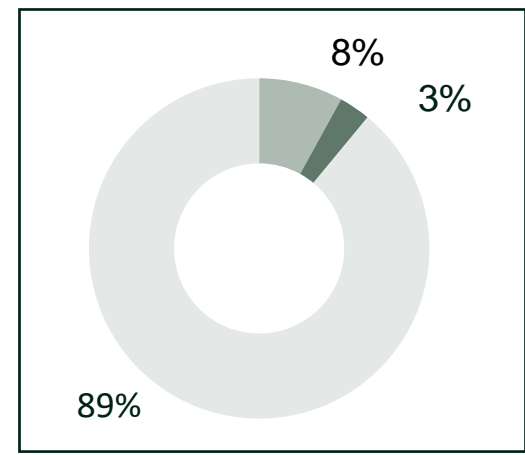
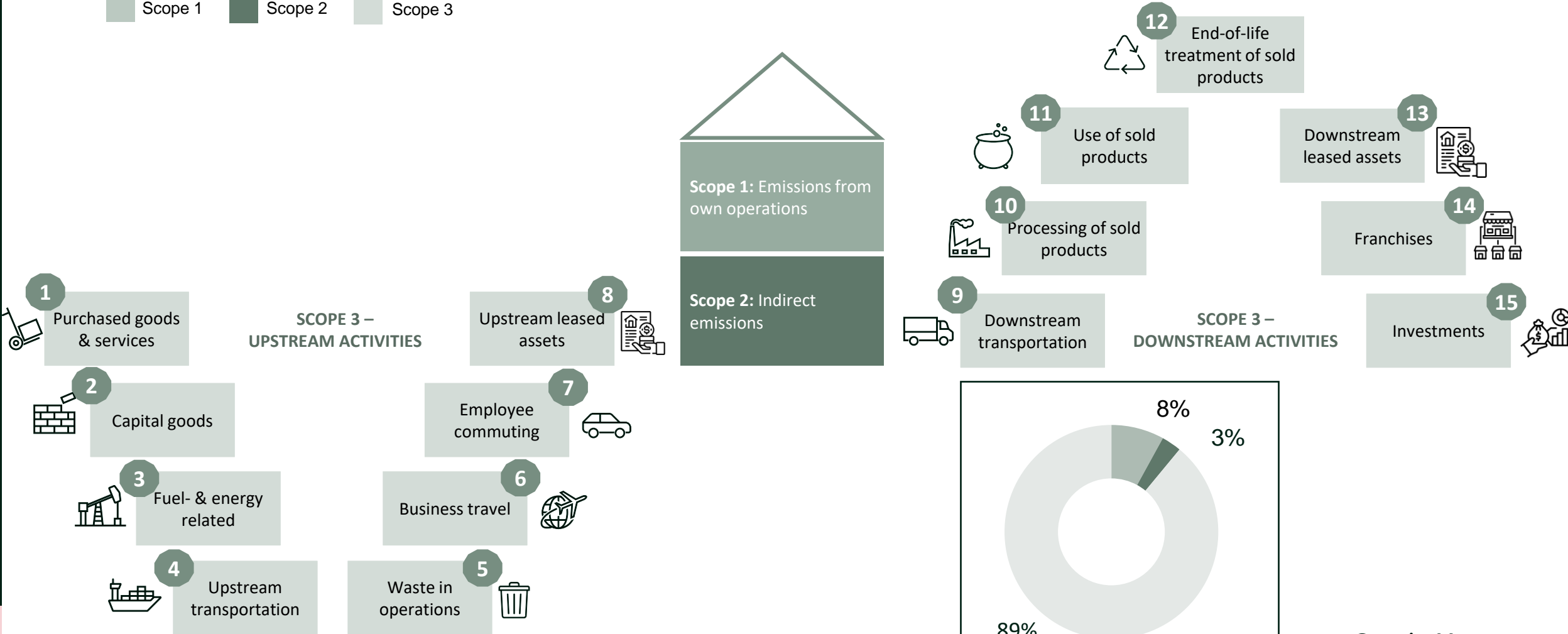
## AKADEMI

Vi tilbyder virksomhedsspecifikke uddannelsesprogrammer og kompetenceudvikling samt generelle kurser indenfor bl.a.:

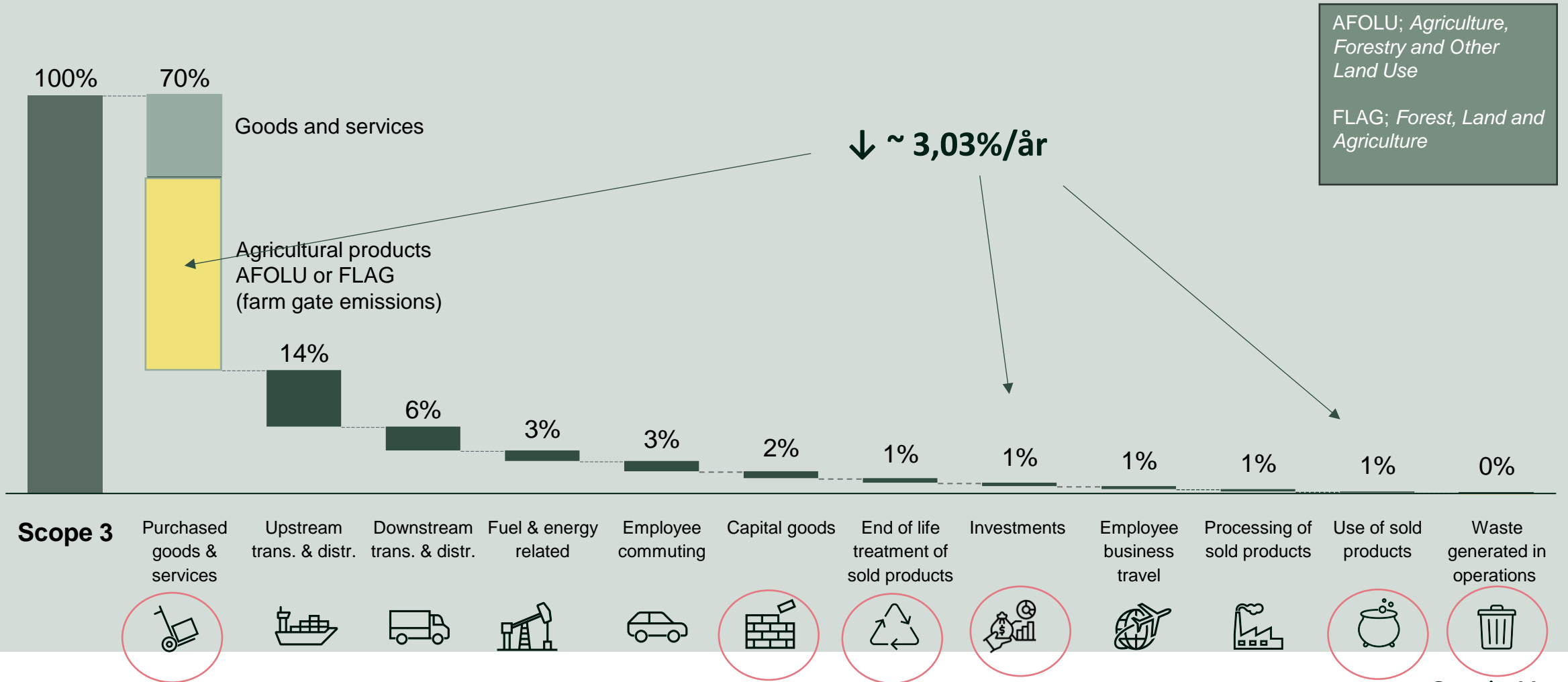
- EU regulativer
- Klimaregnskab og klimahandling
- Sustainability Management i praksis
- Bæredygtige forretningsmodeller
- Introduktion til ESG

# Virksomhederne rapporterer på hele værdikæden

Scope 1
  Scope 2
  Scope 3



# Scope 3 emission breakdown by categories



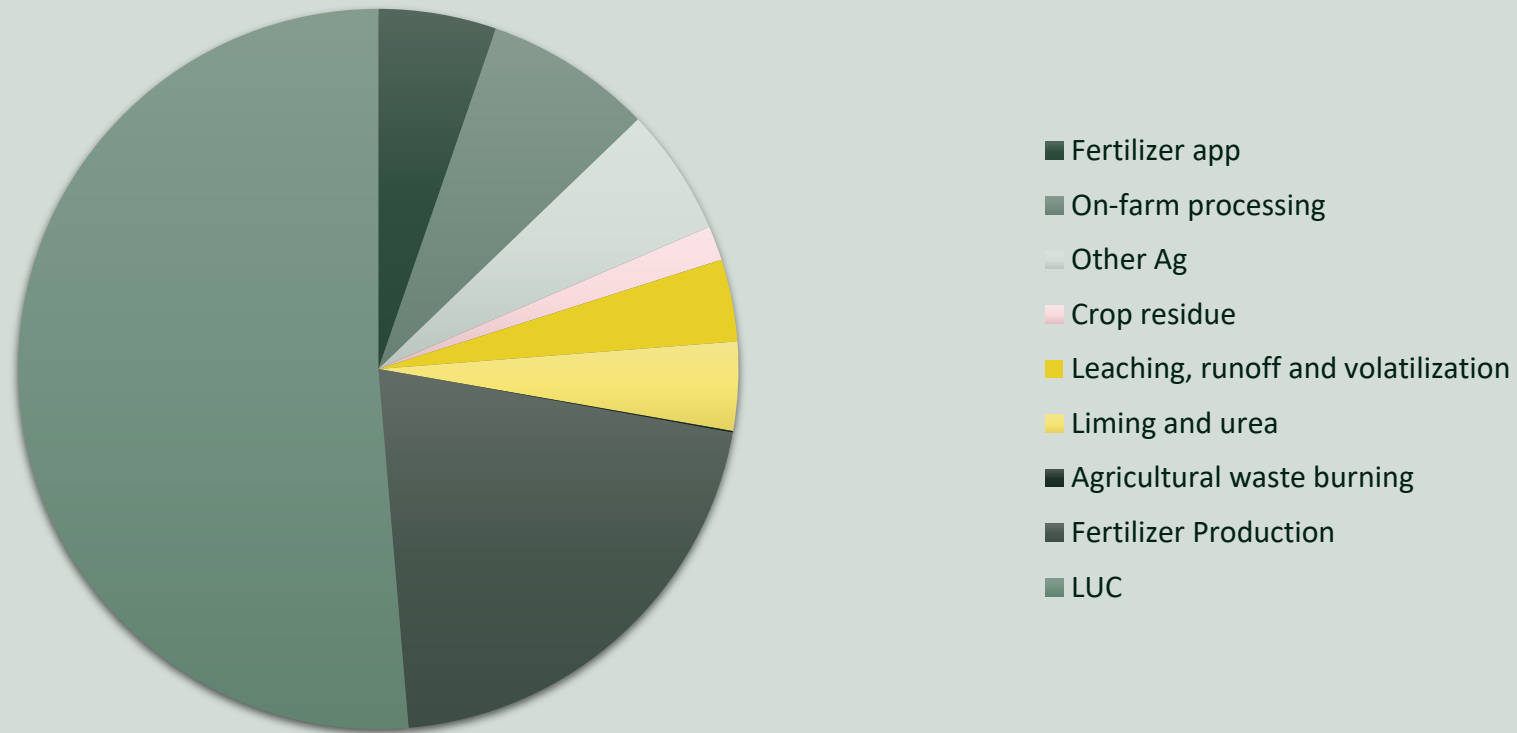
AFOLU; Agriculture, Forestry and Other Land Use

FLAG; Forest, Land and Agriculture

- Scope 3 Purchased goods & services
- Upstream trans. & distr.
- Downstream trans. & distr.
- Fuel & energy related
- Employee commuting
- Capital goods
- End of life treatment of sold products
- Investments
- Employee business travel
- Processing of sold products
- Use of sold products
- Waste generated in operations



## Eksempel på opstrøms udledninger fra indkøbte afgrøder (farm gate)



*tCO<sub>2</sub>e fordelt på emissionsposter i overensstemmelse med SBTi's opgørelsesmetoder (uden removals).*

# Kan regenerativt landbrug levere på...?

## Land Use Change

- Land conversion
- Deforestation including natural forest → plantation

...

## Land management

- Fertilizer application (dir./indir.)
- Fertilizer production
- Crop residue
- Manure management
- Agricultural waste burning
- Machinery
- Soil management (carbon stock changes)

...

## Carbon removals & storage

### Enhancing soil organic carbon

Shifting to erosion control, larger root plants, reduce tillage, cover cropping, degraded soil restoration, biochar amendments

### Agroforestry

Carbon sequestration from integration of agroforestry into agricultural and grazing lands

...

# Principperne for regenerativt landbrug

- Fertilizer application
- Fertilizer Production
- Liming and urea
- Crop residue
- Leaching, runoff and volatilization
- Removals
- Other Agricultural activities (diesel, electricity)
- Agricultural waste burning
- Land Use Change



Integration af husdyr og planteavl



Recirkulering af ressourcer



Levende plantedække året rundt



Minimal forstyrrelse af jorden



Maksimal artsdiversitet

# Prioritering af indsatser

- Reduktionspotentiale (tCO2e)
- Implementeringspotentiale (%)

Reduktionspotentiale

Implementerings  
indsats

Ressourcer:

- Omkostninger (DKK)
- Medarbejder ressourcer (Timer)
- Kompetencer (Ekstern/intern)
- Investeringer (Teknologi)

Hvordan vil virkemidlet blive modtaget af:

- Forbrugere
- Kunder
- Øvrige interessenter

Accept

Grad af indflydelse

- Hvor i værdikæden skal indsatsen lægges
- Hvad er virksomhedens relation til aktøren

# Regenerativt landbrug møder SBTi

- Formål og definition
- Skalering kræver tid, uddannelse og investeringer
- Kort vs. lang sigt: De fulde fordele af regenerativt landbrug opnås over flere år, hvilket kræver tålmodighed.
- Måling af resultater: Kulstoflagring i jorden - svært at måle, MEN ikke umulig.
- Rapportering af fremskridt i SBTi.
  - Konsistens med GHG Protocol LSRG\* (Draft) tilgang til opgørelse af emissioner og removals.
  - Set up for regelmæssig overvågning og rapportering for at sikre effekt og gennemsigtighed.
  - Værktøjer til registrering og dokumentation af effekter. Og kan disse metoder opfylde kravene for nøjagtig måling og verifikation fastsat af LSRG.

\* Land Sector and Removals Guideline

# Opsummering og Perspektiver

- SBTi som en global standard for klimahandling fra et virksomhedsperspektiv
- SBTi target setting stiller specifikke krav til opgørelsen af landbrugsrelaterede produkter i overensstemmelse med FLAG-guidelinen.
- Særligt med udviklingen af nye GHGP standarder som Land Sector and Removals Guideline (LSRG) er der banet vej for at medregne effekterne fra bl.a. regenerativt landbrug

*Tak for opmærksomheden!*