

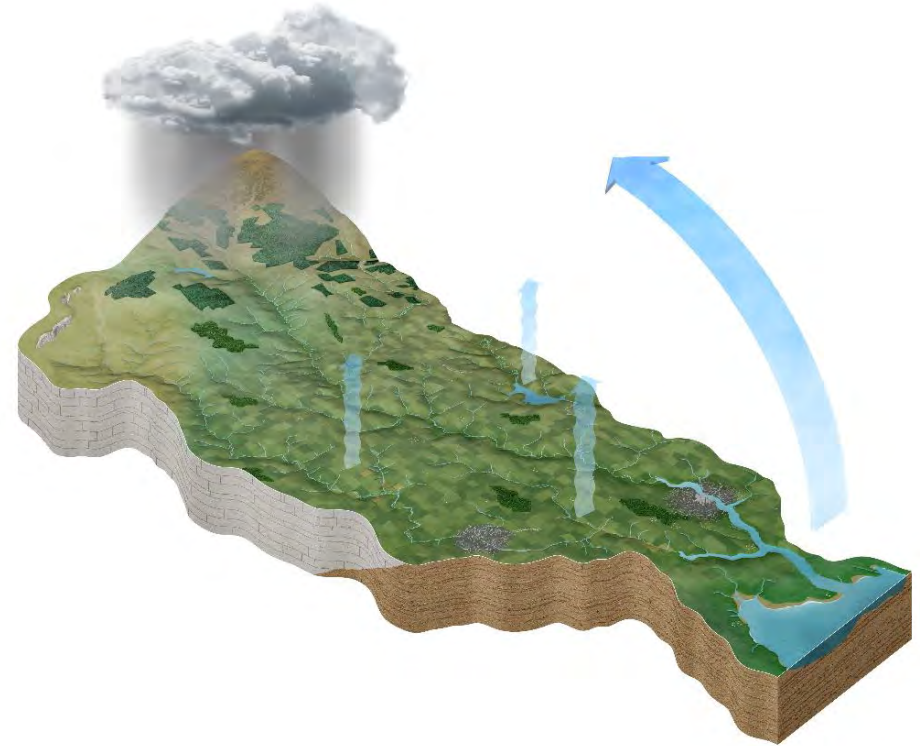
Integrated Catchment Management in Ireland: progress in 2nd Cycle

Local Authority Waters Programme

Margaret Keegan, Regional Coordinator
Midlands and East Region

Local Authority Waters Programme: Who we are

- Coordination of programme and at regional level with implementing bodies and stakeholders
- Catchment Scientists carrying out local catchment assessments to identify the issues and work with stakeholders to implement measures that will bring about water quality improvements.
- Community Water Officers working with communities to raise awareness and deliver projects – many with biodiversity interests.



Coordination Role

- LAWPRO Programme delivery
- Regional committees
- National representative
- Inter-Agency Collaboration
- Building relationships and Stakeholder participation
- Facilitate learning and dissemination of best practice



Environmental Protection Agency

Working with...



Dublin City Council
Comhairle Cathrach Bhaile Átha Cliath



UISCE
ÉIREANN : IRISH
WATER



An Roinn Talmhaíochta,
Bia agus Mara
Department of Agriculture,
Food and the Marine



AGRICULTURE AND FOOD DEVELOPMENT AUTHORITY



Offaly County Council
Comhairle Chontae Uíbh Fhailí



Iascach Intíre Éireann
Inland Fisheries Ireland



An Roinn Tithíochta,
Pleanála agus Rialtais Áitiúil
Department of Housing,
Planning and Local Government



Kildare County Council
Comhairle Contae Chill Dara



comhairle chontae na mí
meath county council



AN LONGFORD
Longford County Council
Comhairle Contae An Longford



Comhairle Contae Fhine Gall
Fingal County Council



Forest Service



Wicklow County Council
COMHAIRLE CHONTAE CHILL MHANTAIN



WESTMEATH COUNTY COUNCIL
Comhairle Chontae na hIarmhí



Comhairle Contae
Átha Cliath Theas
South Dublin County Council



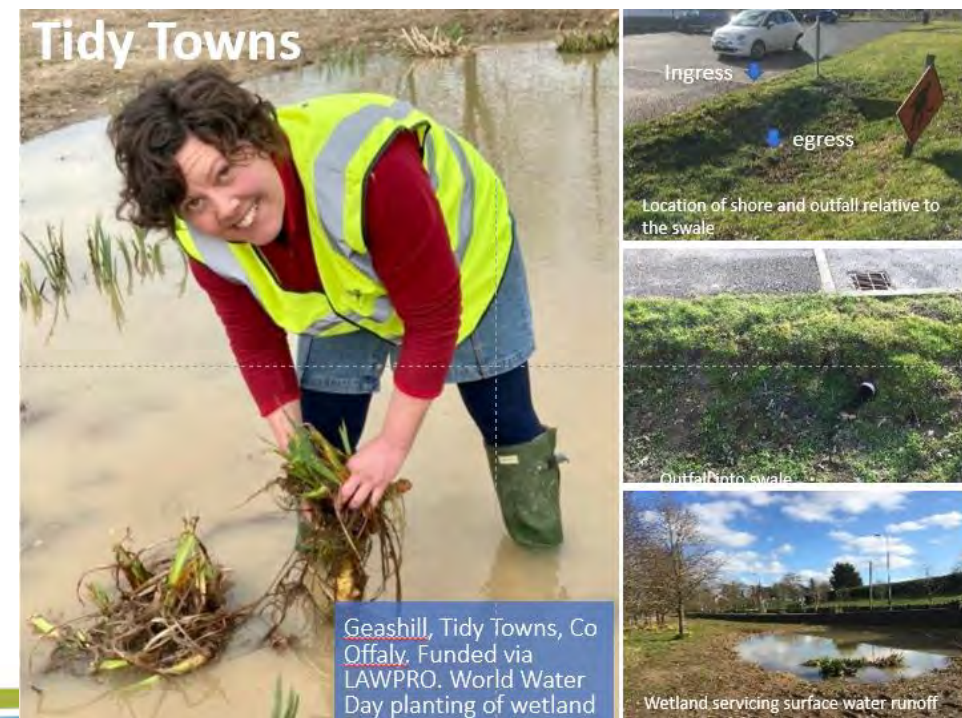
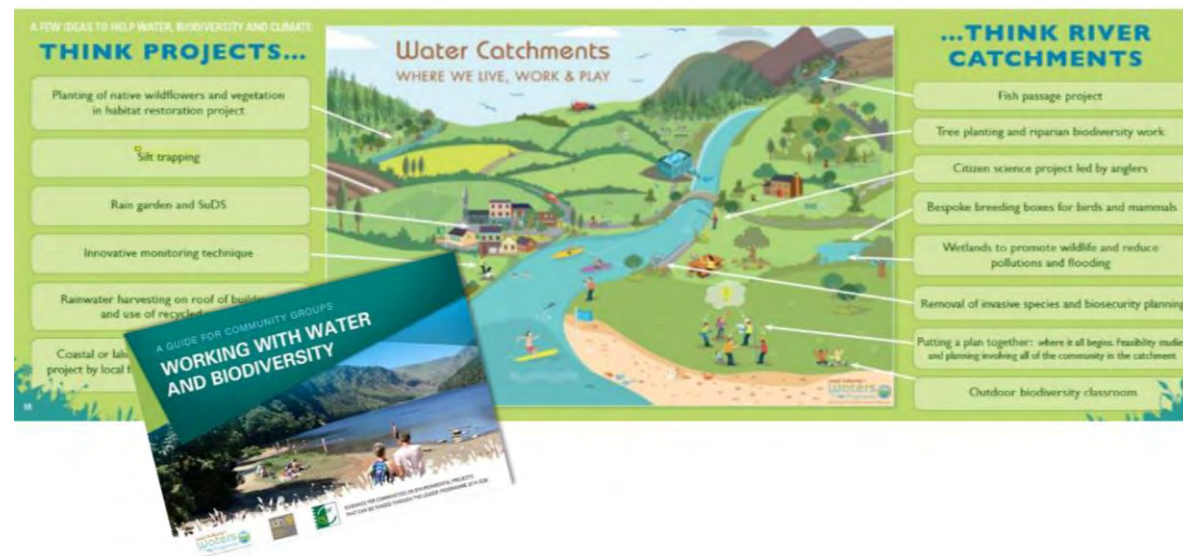
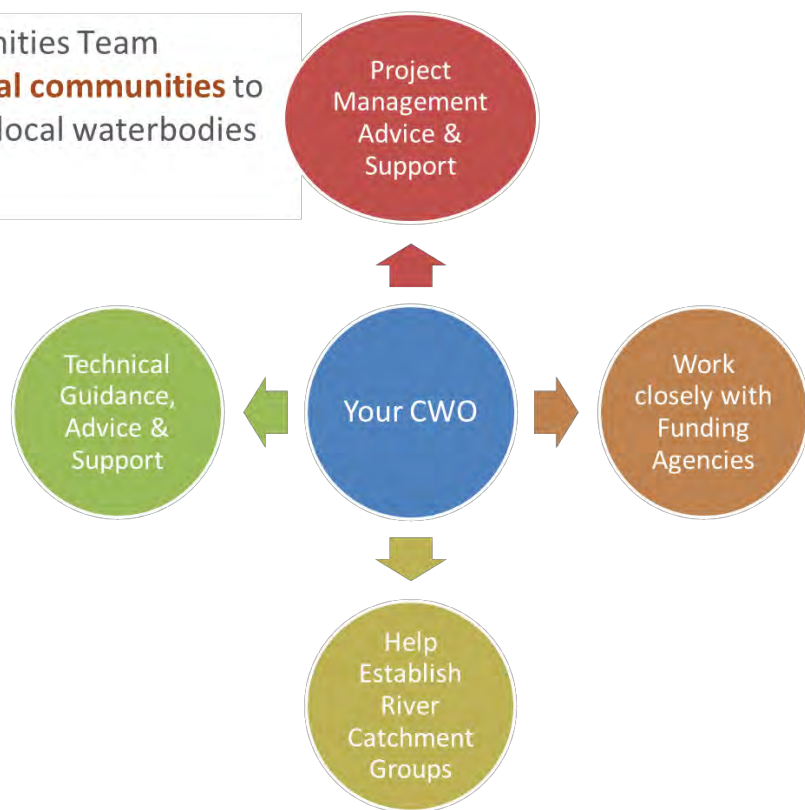
Comhairle Contae County Council



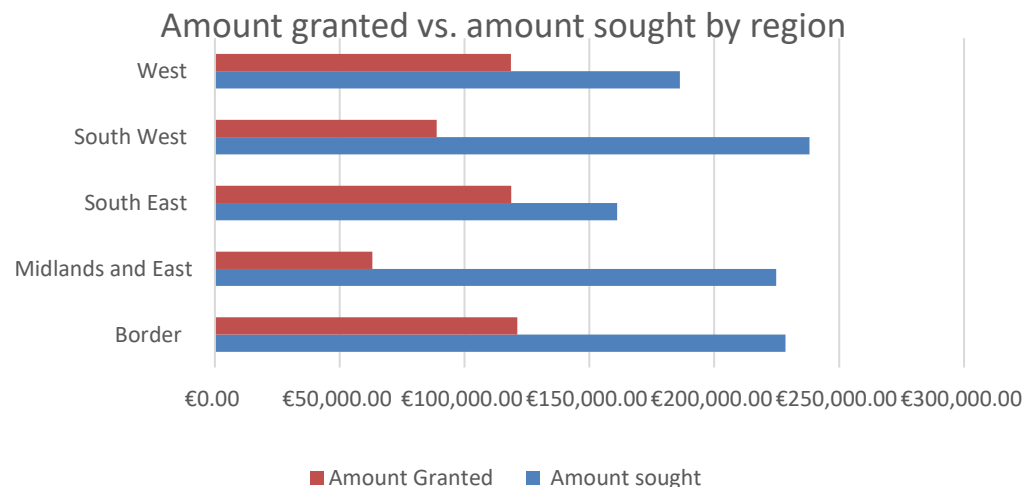
OPW
Oifig na nObairíochtaí Poiblí
The Office of Public Works

Communities in Action

The Communities Team
supports local communities to
manage our local waterbodies
by....



Community Water Development Fund 2022: National Summary



Region	Applications	Total Project Cost	Amount sought	Amount Granted
Border	34	€ 620,354.01	€ 228,470.60	€121,103.94
Midlands and East	55	€ 299,177.30	€ 224,830.80	€63,008.43
South East	26	€ 182,249.26	€ 161,100.53	€118,622.64
South West	52	€ 447,200.46	€ 238,173.90	€88,787.93
West	35	€ 219,760.70	€ 186,256.38	€118,570.37
Overall grant amount sought	202	€ 1,768,741.73	€ 1,038,832.21	€510,093.31



Community Water Development Fund

www.lawaters.ie

Community Water Development Fund - applications received by Project Type 2021



Deele Community Anglers,
Donegal 2020 – Schools
Education Programme

Awareness / Education



Abbey Community
Development Association, Co.
Galway – 2018/19

Habitat enhancement



Ballyfarnon Tidy Towns, Co. Roscommon
- 2020

Biodiversity signage



Blarney Park Community Garden
and Allotments, Co. Dublin -
2021

Ecological survey



Camross Parish Development
Assoc. Co. Laois 2020

Public amenity (including fencing
and benches)



River Blackwater
Catchment Trust,
Co. Monaghan -2021

Tree planting / landscaping



Flossie and the Beach Cleaners, Co.
Dublin - 2021

River / waterbody clean up



Ecological monitoring



Clara Heritage Committee
/Society, Co. Offaly - 2021
Feasibility study

Other



Creevagh Art &
Archaeology Collective,
Co. Clare - 2021

Event



Instream works



Project planning



Invasive Species

Training and Guidance for Communities

- LAWPRO in conjunction with LEADER and the Irish Local Dev. Network produced a guidance document integrating water, biodiversity and climate project ideas for community when applying for LEADER funding to enhance their local environment.
- LEADER companies' delivery of Water and Biodiversity local catchment scale Training
 - 15 local Catchment Scale Courses delivered to over 400 participants
 - 5 further courses are planned
- LAWPRO working with the Rural Development Committees (inc. Waters of LIFE), Dept of Rural and Community Development and LEADER into the next LEADER programme – increased focus on high status objective waterbodies.

**A GUIDE FOR COMMUNITY GROUPS
WORKING WITH WATER,
BIODIVERSITY AND CLIMATE**

Bespoke Water and Biodiversity Training

- 8 Module course
- Water literacy
- Tailored for local area (waterbody)
- Citizen science
- Development of local plans & projects
- Networking

Rural Development Companies

NEWKID
IRD Duhallow
RL Top DC
LCRL
SECAD
Avondhu
Westmeath Community Development
OLDIC
Laois Partnership
South West Mayo Dev Co
Roscommon Leader Partnership
Forum Connemara
Galway Rural Development
Carlow Leader
Donegal Local Development Company
Sligo Leader Partnership Ltd
Waterford Leader Partnership
Wexford Leader Company
Fingal LEADER Partnership
Louth Leader Partnership

Duhallow Water Biodiversity Training

Local Catchment Assessment



- Public meetings = 164
- Farmer Meetings = 131
- Desk Studies = 183
 - Water of LIFE IP = 6
- Signpost Farm reports >100
- Local Catchment Assessment = 161
- Referrals >100 PAAs

 Water Quality Improvements

Capacity Building & Knowledge Sharing

2nd Cycle Catchments Assessment Outcomes

Governance, Coordination & Strategic Partnerships

Regional Management Committees x 5
Regional Operational Committees x 5
LA Liaison Groups
NTIG
Blue Dot Steering Group

Local Catchment Assessment

183 Desk studies
6 Waters of Life Desk Studies
100+ Desk Study for Signpost farms
164 Community Meetings
131 Farmer Meetings
161 LCAs
100 Action Plans started
102 PAAs with Referrals

Referrals*

486 Total
380 – ASSAP
37 – Local Authorities
30 – EPA
18 – Forest Service
1,231 Nitrate Catchment referrals
* Includes Protect Referrals for Blue Dots

Capacity Building & Knowledge Sharing

CSM Training Course
Pilot ICM 1 Day Course
IT Carlow course (Level 7 FETAC certified)
Agricultural Advisors -
Farming for Water Quality
WFD App Data Sharing
Catchments.ie
Lawaters.ie – PAA Resources
Guidance Publications, e.g.,
Cattle Access

Innovation & Evolution of Methodologies via Working Groups

Ecology
Lakes
Sediment & Hydromorphology
Blue Dot
Agriculture
Chemistry
Date & GIS

Advisory & Collaborations

EPA Research Project SCs
EIPs
LIFE & LIFE IPs
Drinking Water Directive
Catchment Focus Groups –
Pesticides
ASSAP Coordination & Oversight

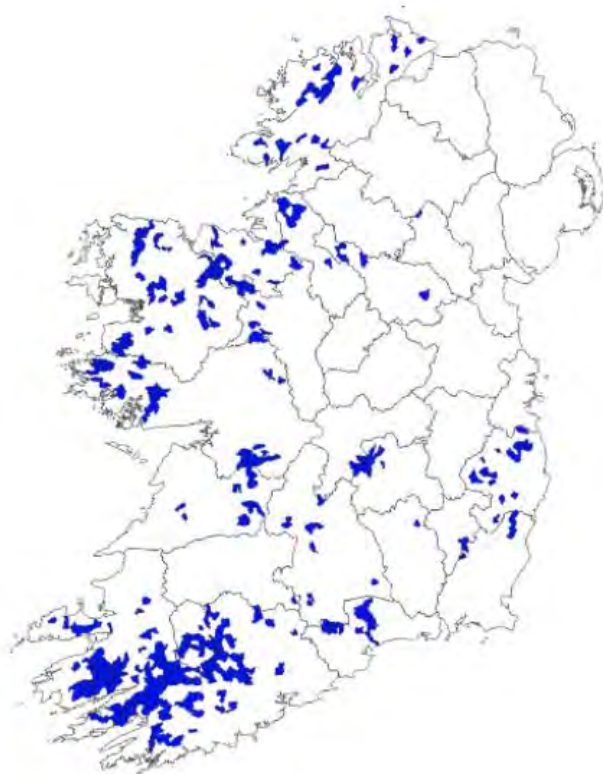


Photo: Joan Martin CSM Course Kilmainham Dee

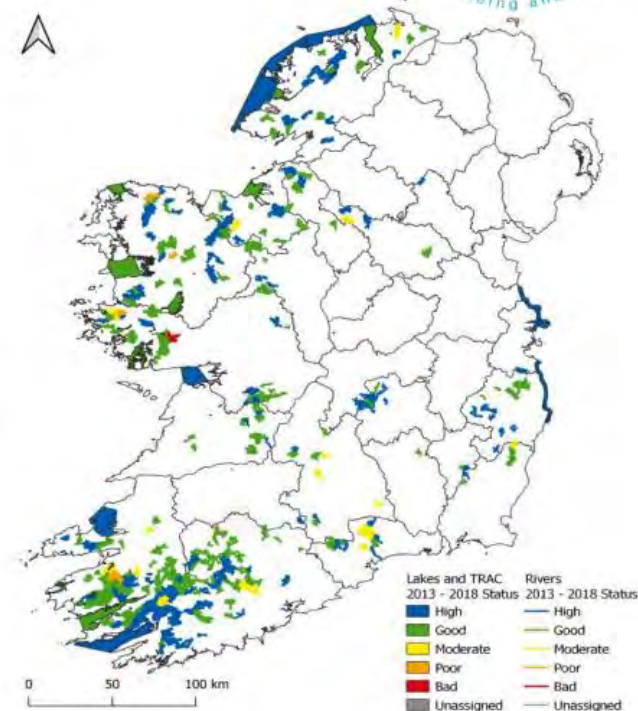


Blue Dot Catchments programme

Blue Dot Catchments Programme – Best of the best



- Blue Dot (High status or pristine water)
1. Cleanest of natural water in Ireland
 2. Quite rare in Ireland (<18% nationally)
 3. Water quality essential for salmon and trout – especially for breeding grounds
 4. Supports rare species such as Freshwater Pearl Mussel
 5. Supports a range of increasingly threatened insects and other invertebrates



Produced by LAWPRO on 22 - 04 - 2021

dRBMP Public consultation

LOCAL CONSULTATION

- Developed a Virtual Consultation Room
- Used network to facilitate meetings
- Explained the content of dRBMP
- Collated feedback and encouraged submissions
- Feedback presented to Government Department to influence content RBMP
- Issues raised with relevant implementing bodies and queries answered

Draft River Basin Management Plan 2022 – 2027

LAWPRO public consultation and local engagement

Communication and promotion of consultation process

- ★ Collaboration with PPNS – Engagement with *Environmental and Community & Voluntary pillars*
- ★ Email to local authority management and Elected Members
- ★ Email to local networks of contacts and communities
- ★ Social media campaign – *Reach 1 million, Total Clicks 45,507*
- ★ Press and radio campaign – *41 press releases, 41 press ads, 21 radio ads*
- ★ Digital media – *website landing page and online submission form virtual consultation room: 6,100 unique visits*

Key Results

- 93 online meetings held
– *at a local level in each county*
- 1,594 participants at meetings
– *notes of discussions documented*
- 450 Submissions received
– *via online portal and email*

Strong Support For

- Improving water quality generally
- Empowering communities for stewardship of local waters
- Nature based solutions and citizen science
- Meaningful actions and responsibilities for communities
- Increased water literacy – communications and education
- Increased community engagement around water

Key Themes Raised

- How can individuals and community groups improve water quality?
- Negative impacts from certain Agricultural practices
- Collaboration between agencies, public bodies, and departments
- Increased and ongoing education for farmers
- Role of funding for agencies and local authorities
- Education and engagement on the importance of water quality
- Improved wastewater treatment
- Ensure infrastructure and dredging do not endanger fish
- Improvements to enforcement and planning regulations



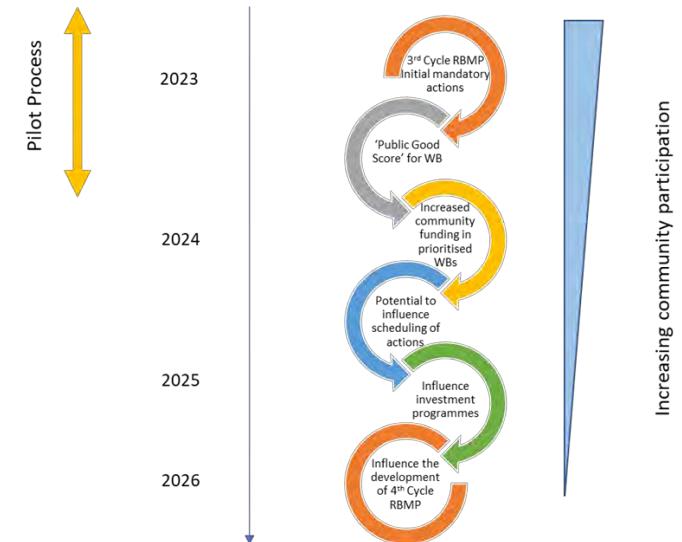
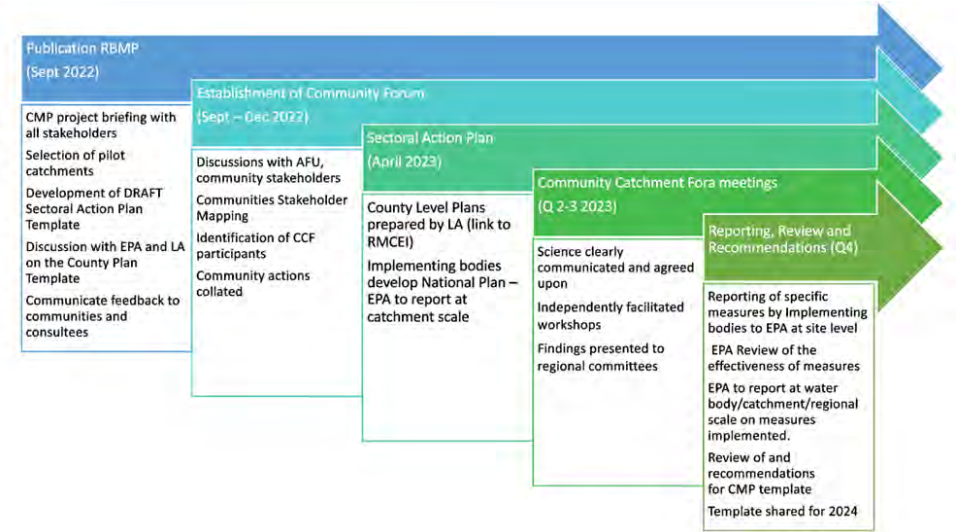
3rd Cycle future plans(1)

- Increase in number of Areas for Action
 - Priority Areas for Action: LAWPRO
 - LA Areas for Restoration or Protection
 - Areas for Human Health Protection/Restoration: NFGWS
 - Catchment Projects: Multiple Parties



3rd Cycle future plans(2)

- Need for more community and public participation identified
- Proposal to establish Community Catchment Fora
- Proposal to develop Catchment Management Plans
 - Scale??
 - Sectoral action plans – National to catchment scale
 - Link to estuaries
- 5 Five areas being considered to pilot both proposals and to examine how the CCF will be able to influence CMP over time.



CMP Opportunities and Challenges

Establishment of CCF

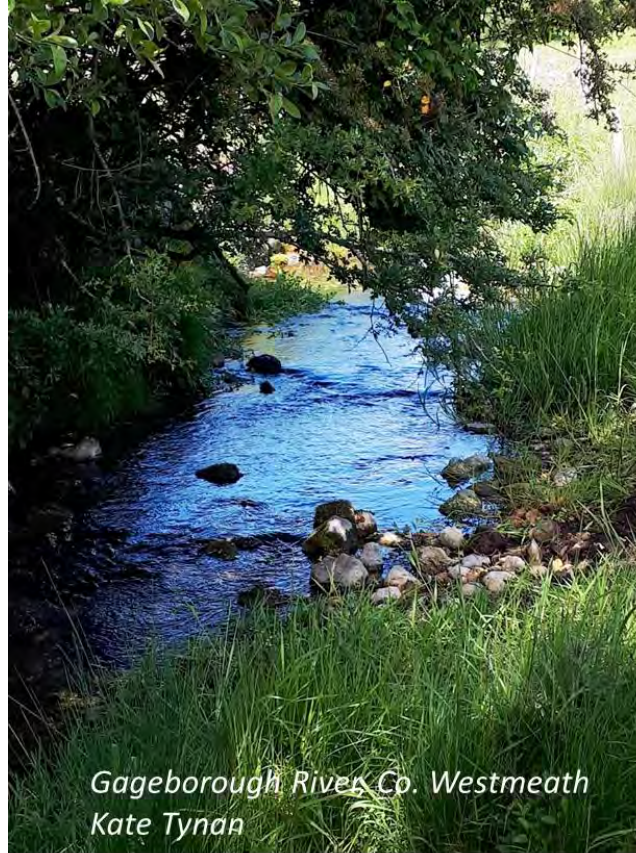
- Representative
- Delivery mechanism
- Funding model

Sectoral reporting on implementation

- Data management
- National legal requirements
- Level of community influence at catchment scale

Community Action

- Manage expectations
- Capture and support



Thank You

Thanks to my LAWPRO, EPA and ASSAP colleagues for their input.

Any Questions ???