

Gilts: Selection and housing

Selection

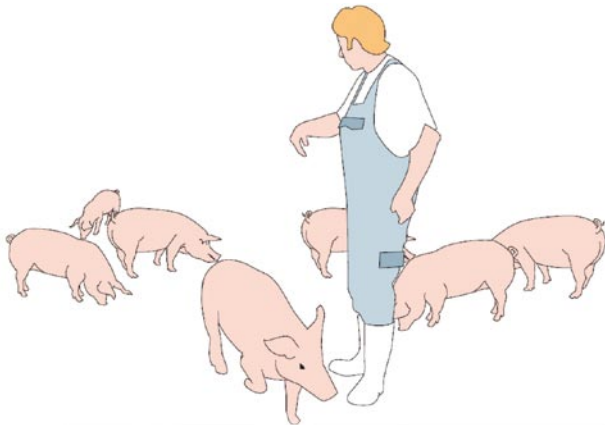
Gilts must be routinely selected during growth. Only the best gilts can be selected for breeding.

A gilt is ready for service if she has:

- Medium condition.
- Strong and even legs.
- Uniform and healthy hooves.
- Straight line of the back.
- Untroubled gait without wavering hindquarters.
- Minimum 13 functional teats.
- A calm and sociable behaviour.

Housing

- Solid or drained floor in min. half of the pen.
- Clean and non-skid flooring with sprinkling above the dunging area.
- Permanent access to rooting and enrichment material.
- Gilts should be mixed with older gilts during growth so they learn to socialise with other animals.
- Walk daily among the gilts.



Human contact and regular touching of the gilt is important.

Feeding

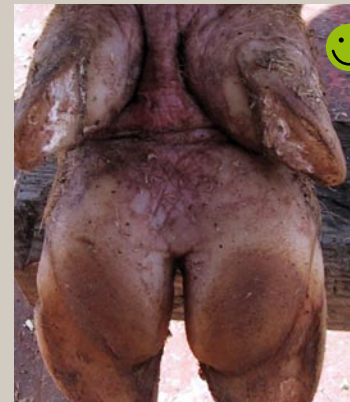
The feed can be given as dry feed or as liquid feed.

STRATEGY FOR FEEDING GILTS

Weight	From 30 kg to approx. 60 kg	From approx. 60 kg to service
Diet	Finisher feed	Lactation feed
Strategy	Ad lib	Restrictive - max. 2.5 FUgp a day
Method	Long trough or ad lib feeder	Long trough or on floor



Strong and even legs



Uniform hooves

SPACE

Weight/ number	Recommendation m ² per animal
50 - 85 kg	0.75-1.00
85 - 110 kg	
From 110 kg	1.50-1.90
As a group	Statutory requirements
First 10 gilts	1.90
Next 10 gilts	1.70
For every extra gilt	1.50