



MUNICIPALITY  
OF VÄSTERVIK

# WaterDrive

## Investment plans and results

Gun Lindberg  
[gun.lindberg@vastervik.se](mailto:gun.lindberg@vastervik.se)

Anders Fröberg  
[anders.froberg@vastervik.se](mailto:anders.froberg@vastervik.se)

*Waterdrive*



MUNICIPALITY  
OF VÄSTERVIK

# Status about the work in the Waterdrive case area

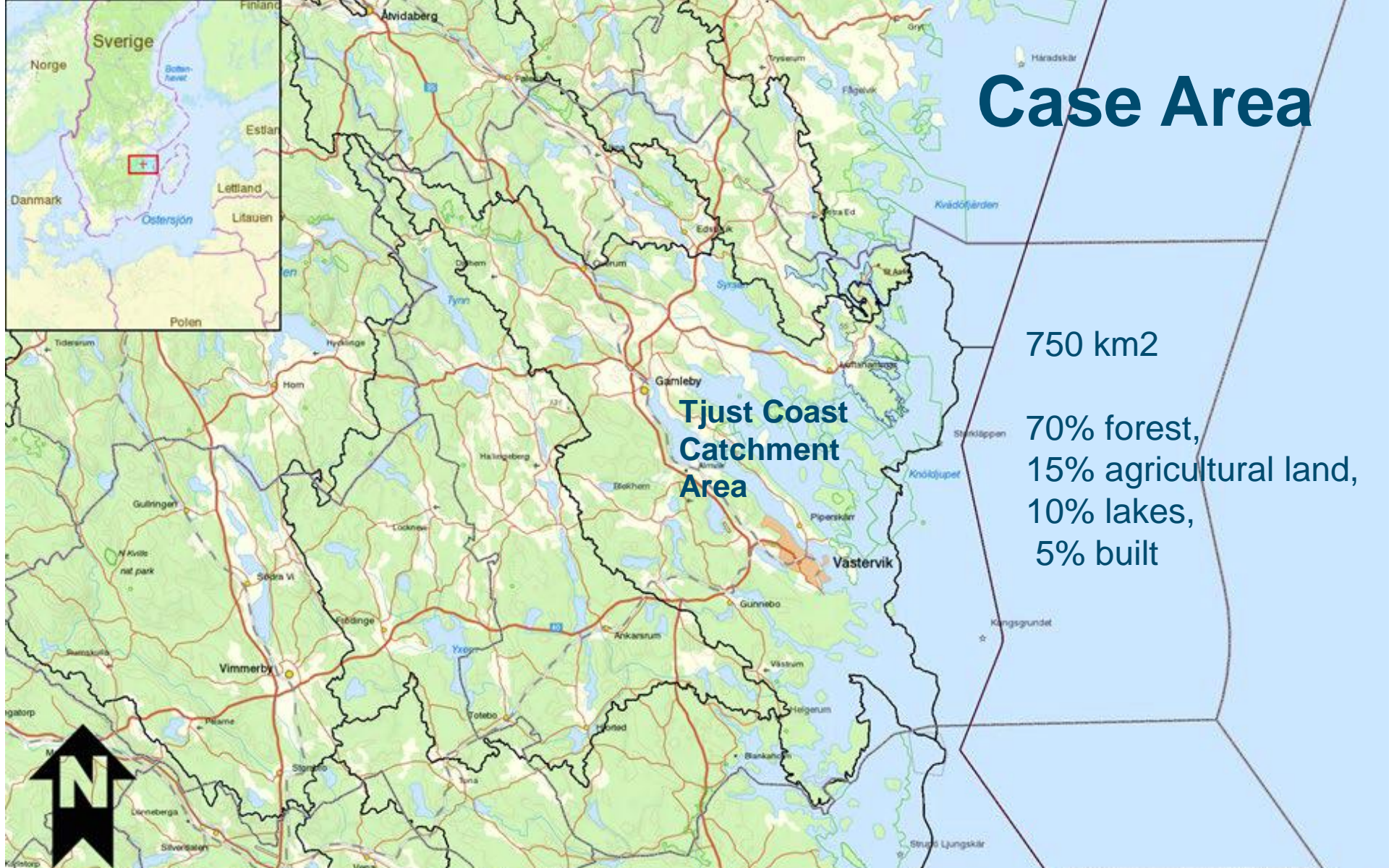
- **Investment and Implementation plans**
- **Calculation of costs of environmental measures**
- **Cooperation structures in case area**

*Waterdrive*

 **Interreg**  
Baltic Sea Region



EUROPEAN  
REGIONAL  
DEVELOPMENT  
FUND



# Case Area

## Tjust Coast Catchment Area

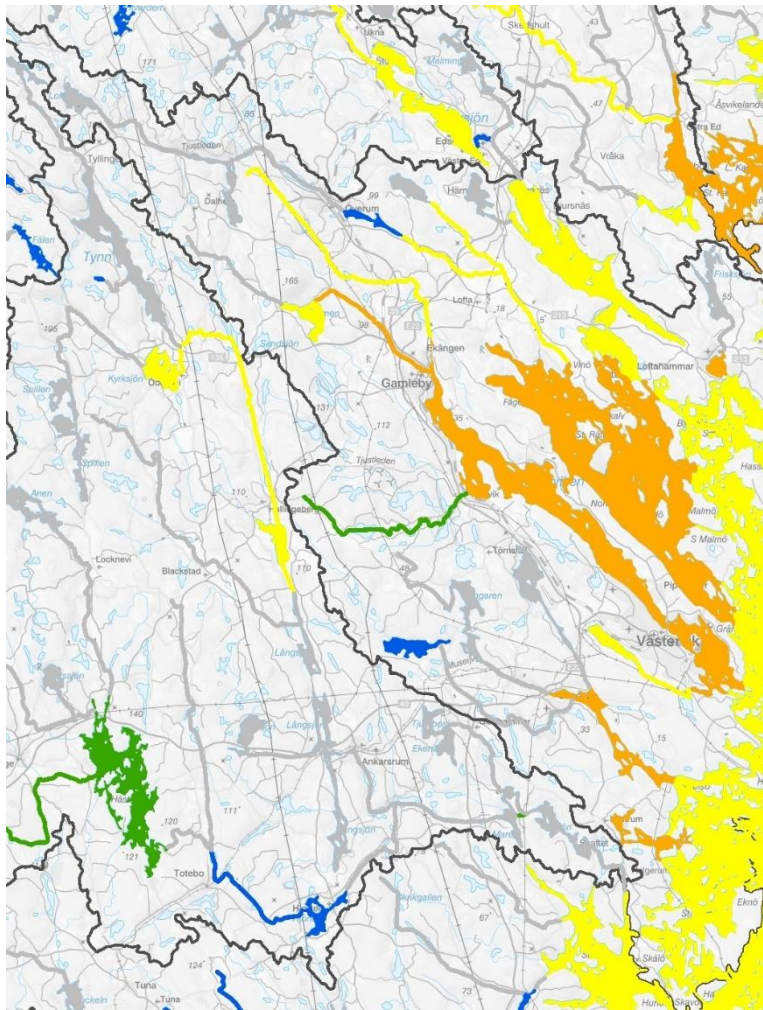
750 km<sup>2</sup>

70% forest,  
15% agricultural land,  
10% lakes,  
5% built





MUNICIPALITY  
OF VÄSTERVIK



# Case Area VISS Status Classification 2016 Nutrients

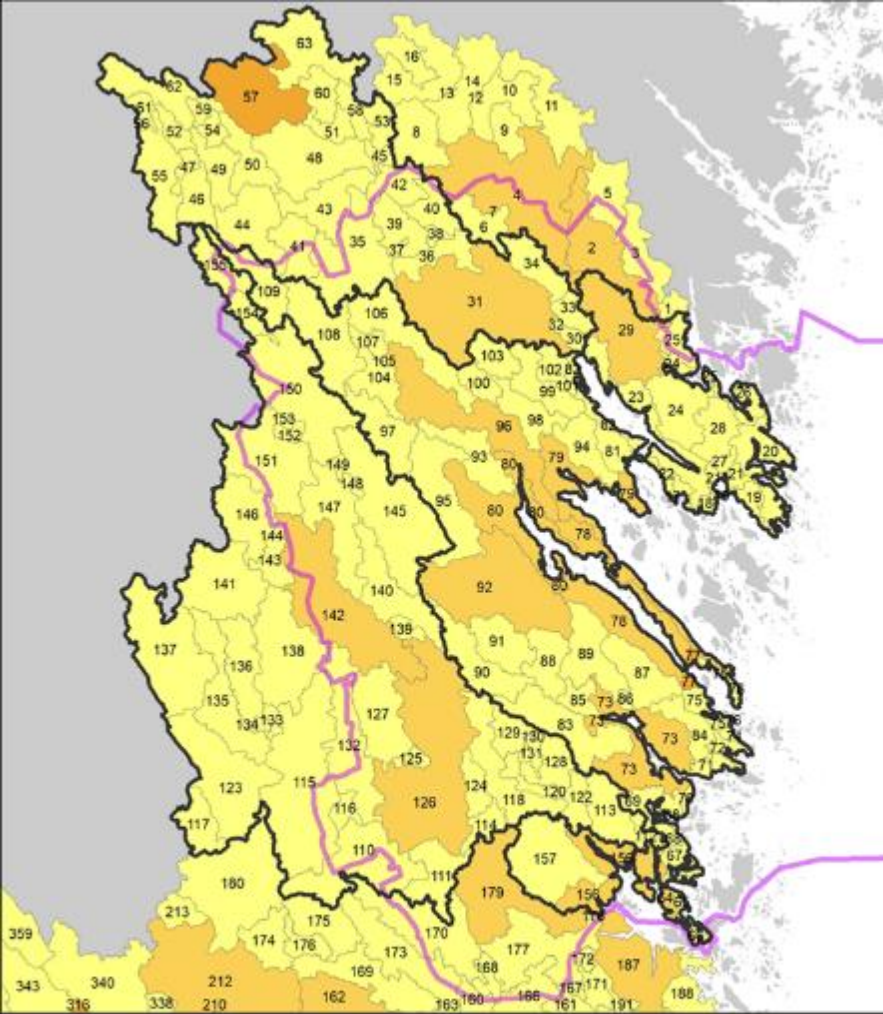


*Waterdrive*



 **Interreg**  
Baltic Sea Region



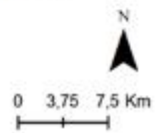
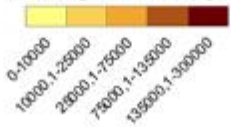
EUROPEAN  
REGIONAL  
DEVELOPMENT  
FUND



**Teckenförklaring**

-  Huvudavrinningsområde (HARO)
-  Kommungräns

**Belastning kväve netto (kg/år)**



# 1. Modelling/GIS

- **Nutrient load nitrogen and phosphorus**
- **Nutrient sources**

# 2. Monitoring

# 3. Priority - need for actions



MUNICIPALITY  
OF VÄSTERVIK



VÄSTERVIK  
KOMMUN



**Loftaån**  
**- åtgärdsplan 2018-2021**



Kommunstyrelsens förvaltning, Enheten för samhällsbyggnad  
2018-09-30

# Investment and Implementation plans

## Catchment area perspective

## Local plans

## Focus on Agriculture - Measures and development

*Waterdrive*



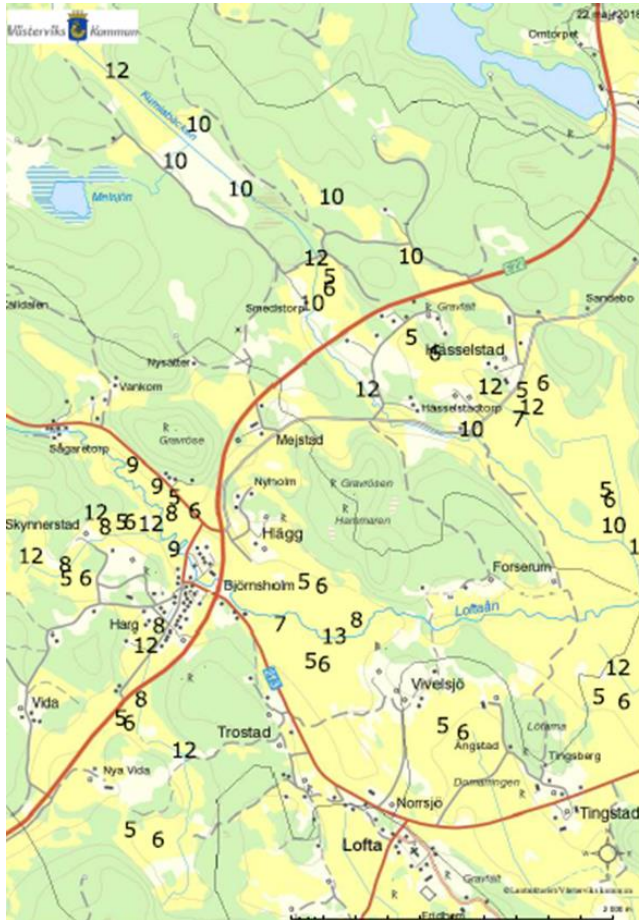
EUROPEAN  
REGIONAL  
DEVELOPMENT  
FUND





MUNICIPALITY  
OF VÄSTERVIK

# Local investment plan



*Waterdrive*

 **Interreg**  
Baltic Sea Region



EUROPEAN  
REGIONAL  
DEVELOPMENT  
FUND



MUNICIPALITY  
OF VÄSTERVIK

# Cost measures in catchment area 2018 - 2020

Measure	Areal	P decrease kg/year	Year	Costs Euro
Structure liming	500 ha	100	2018-2020	400 000
Small wetlands	12 ha	120	2019-2020	240 000
P-ponds	1 ha	70	2020	30 000
Soil mapping	850 ha	128	2019-2020	17 000
Bevelling ditches	1500 m	25	2020	37 500
Two stage ditches	1500 m	390	2020	75 000
Filter ditches	30 ha	30	2020	150 000

+ Project Management 100 000 Euro

Total sum: 1 million Euro

*Waterdrive*





MUNICIPALITY  
OF VÄSTERVIK

# Implemented and planned measures





MUNICIPALITY  
OF VÄSTERVIK

# Calculation of costs of environmental measures – reality

Soil mapping	20	Euro/ha
Structure liming	800	Euro/ha
Wetlands	20 000	Euro/ha
Phosphorus pond	30 000	Euro/ha
Ecological functional zones	45	Euro/m
Lime/biochar filtration ditches	5000	Euro/ha
Woodchips filtration ditches	3000	Euro/ha
Two step ditches	50	Euro/m
Bevelling ditches	25	Euro/m
Protection zones	500	Euro/ha
Adapted groundwater surface	1500	Euro/ha

*Waterdrive*



MUNICIPALITY  
OF VÄSTERVIK

# Cooperation structures - Catchment officer in the municipality

- Close contact with farmers
- Close contact with local authorities
- Advice
- Financing – LONA, LOVA, Leader, etc.
- Contact with other authorities and academia
- Monitoring
- Planning, design
- Reporting, information

*Waterdrive*

 **Interreg**  
Baltic Sea Region



EUROPEAN  
REGIONAL  
DEVELOPMENT  
FUND





MUNICIPALITY  
OF VÄSTERVIK

# From investment plan to implementing measures

- Initial dialog – Catchment area
- Local plan in collaboration with landowners/SWOT
- Financing - including landowners
- Agreement
- Procurement
- Implementation
- Final inspection
- Monitoring



*Waterdrive*

 **Interreg**  
Baltic Sea Region



EUROPEAN  
REGIONAL  
DEVELOPMENT  
FUND