



restoration of coastal habitat zones

COASTal LIFE

Billede: Strandenge ved Løgstør bredning



Co-funded by
the European Union

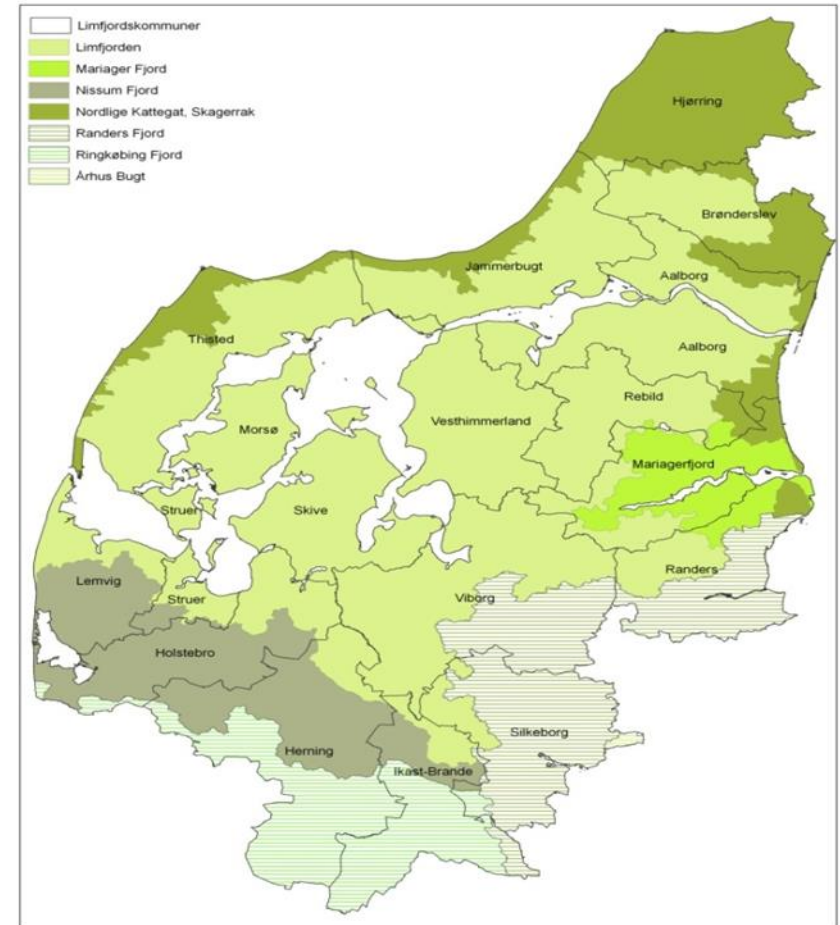


**AAGE V.
JENSEN** 
NATURFOND

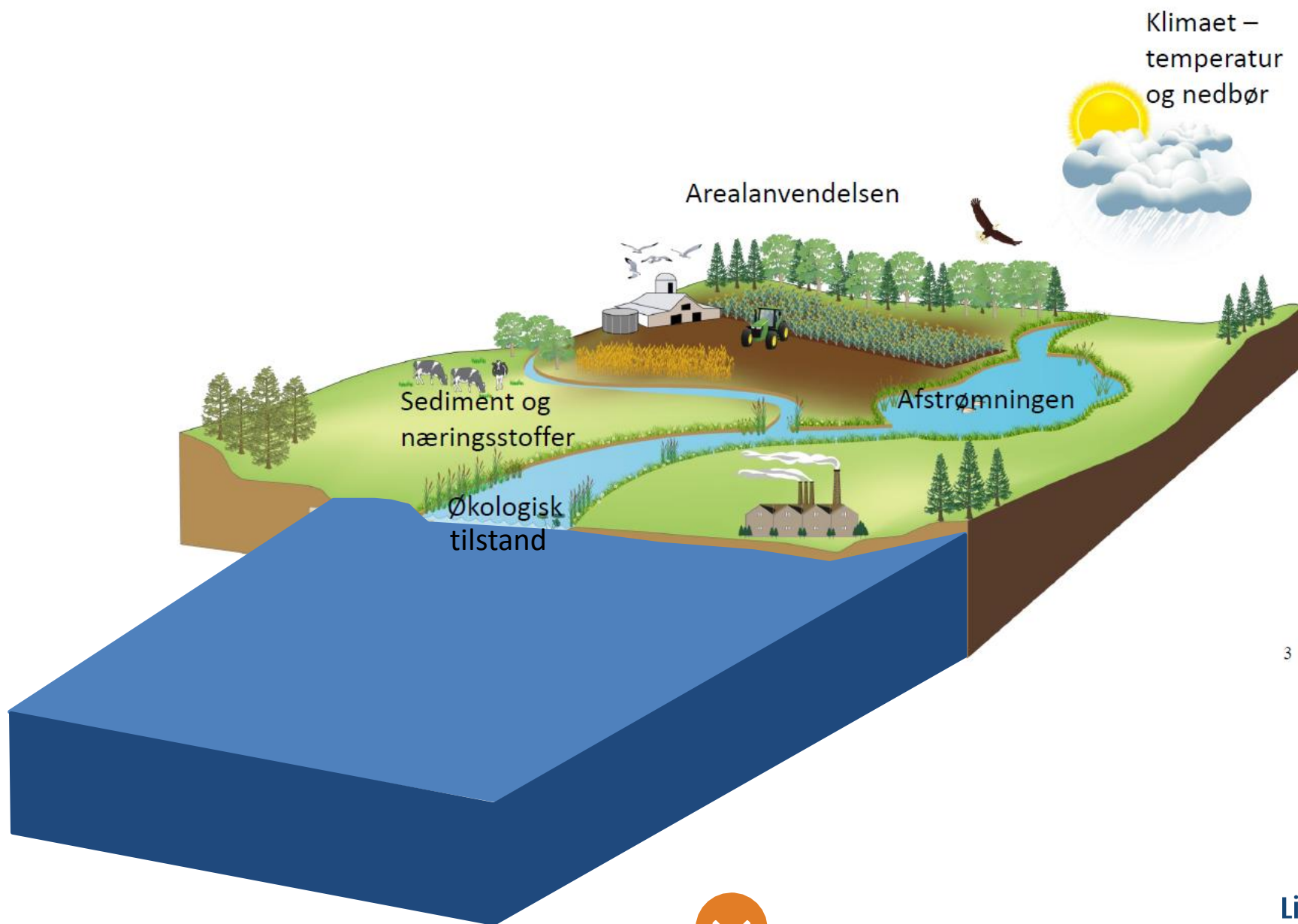
Ørsted

Limfjordsrådet

- Etableret i juni 2007
- 18 medlemskommuner
- Det Politiske Forum (Styregruppen) består af byrådsmedlemmer fra de deltagende kommuner
- Embedsmandsgruppen - Kommunernes Teknik- og Miljøchefer
- Limfjordssekretariatet består af 14 ansatte
- Kommunale følgegruppe(r) efter behov



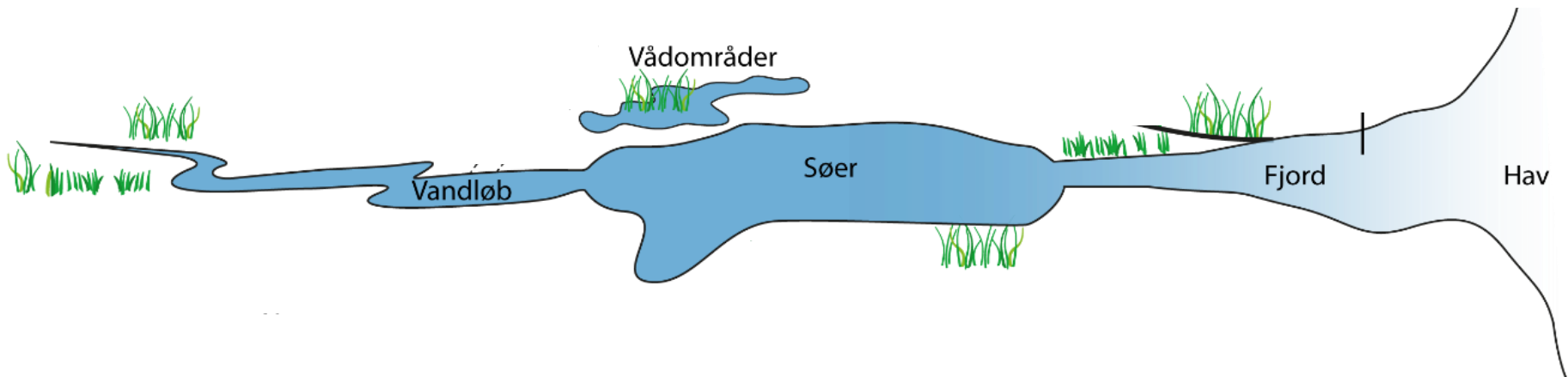
Helheder og synergi



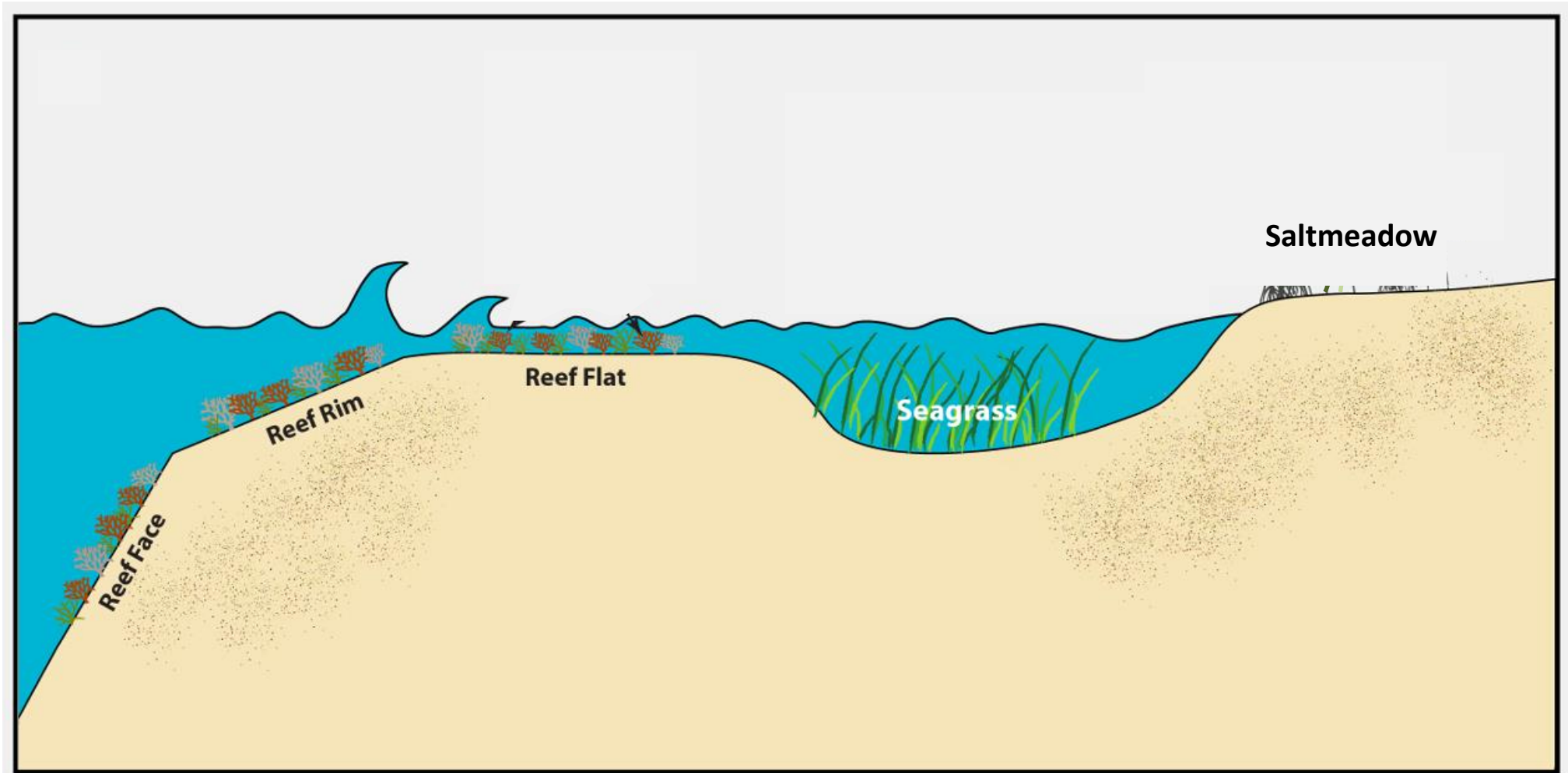
3



Helheder og synergi



Helheder og synergi



og synergi

MASTERPLAN

-LIMFJORDEN I BALANCE-

DE 18 KOMMUNER I LIMFJORDENS OPLAND SAMARBEJDER OM
BÆREDYGTIGE LØSNINGER FOR MILJØ, KLIMA OG NATUR.

Limfjordsrådet

Saltmeadow

Reef Rim

Reef Face





Muslingerev



Ålegræs



Stenrev



Holme



Klima

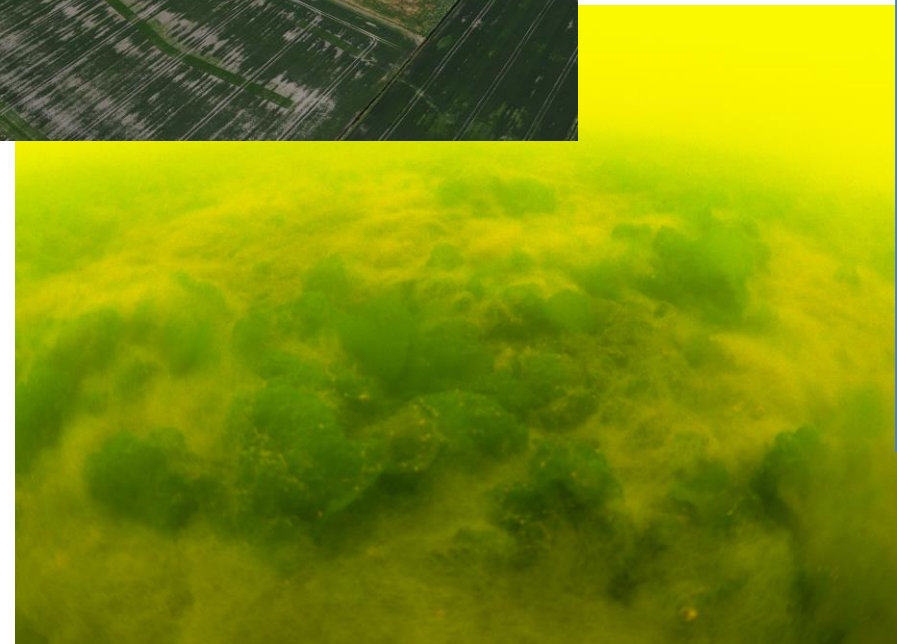


Formidling



Strandeng





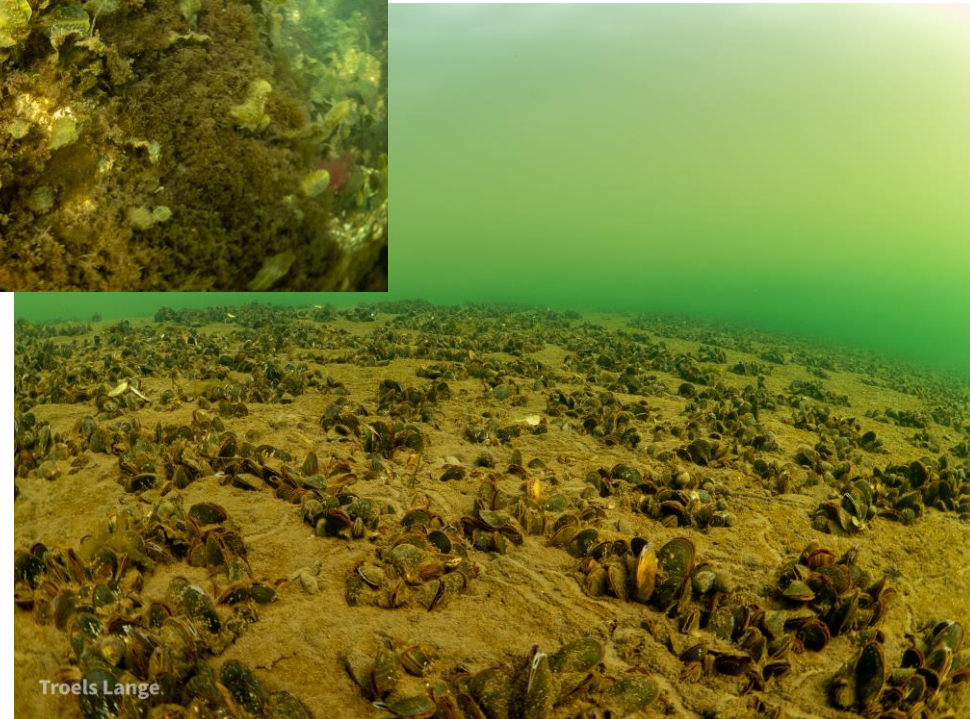
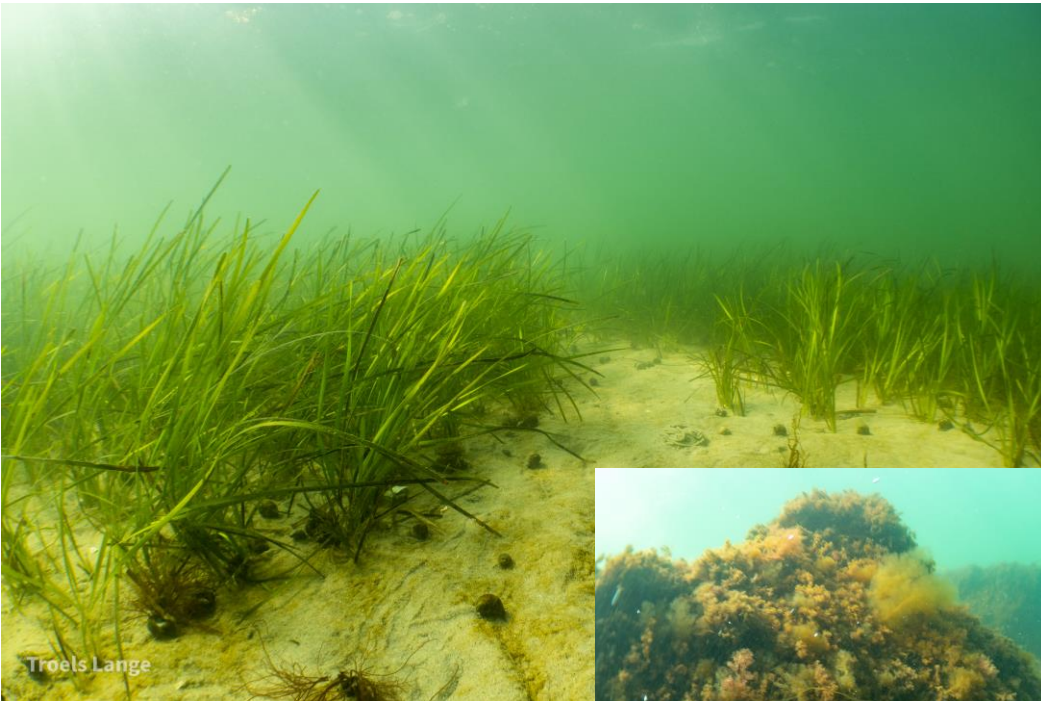
Gældende forhold





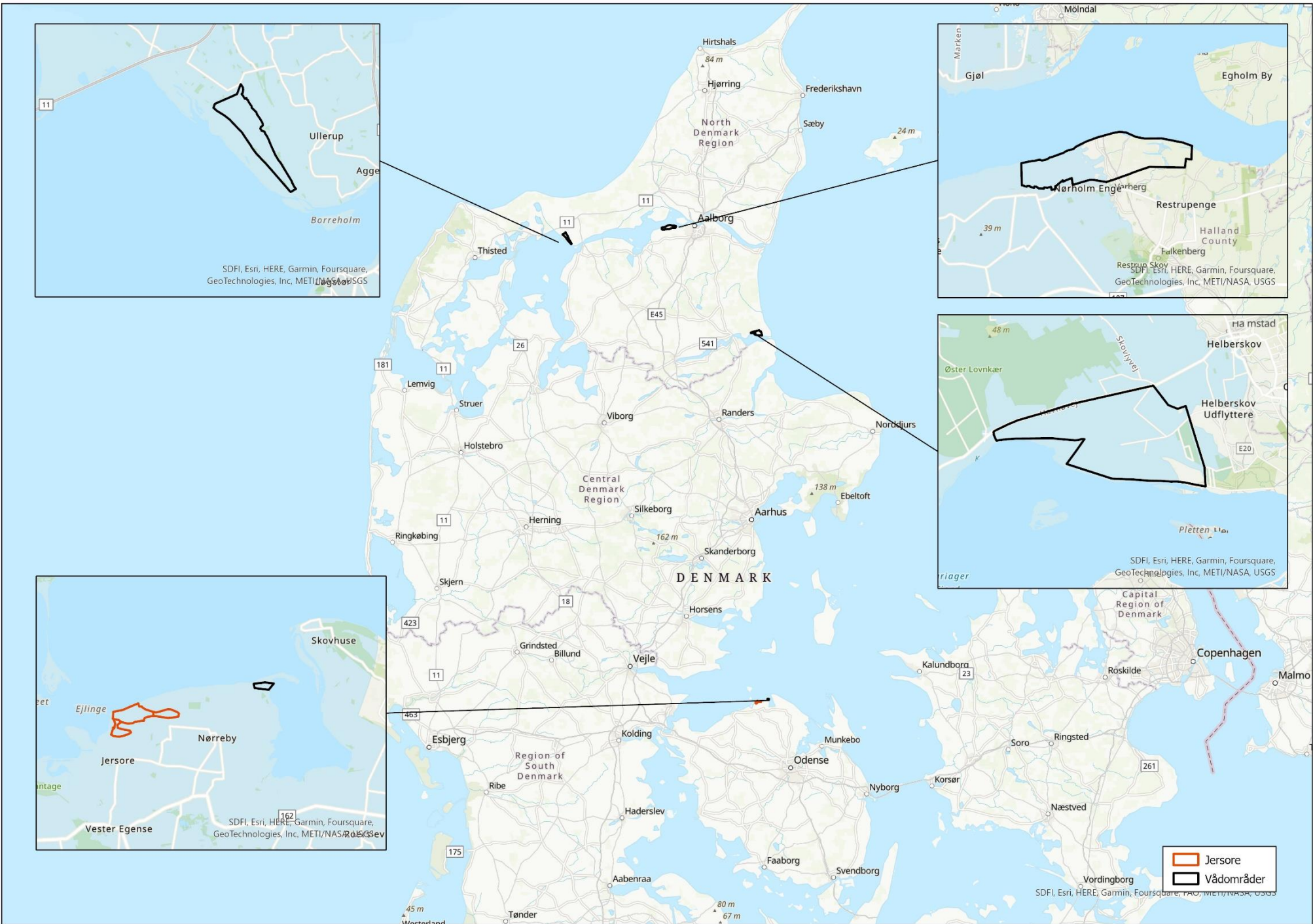
Naturgenopretning på land





Naturgenopretning til vands







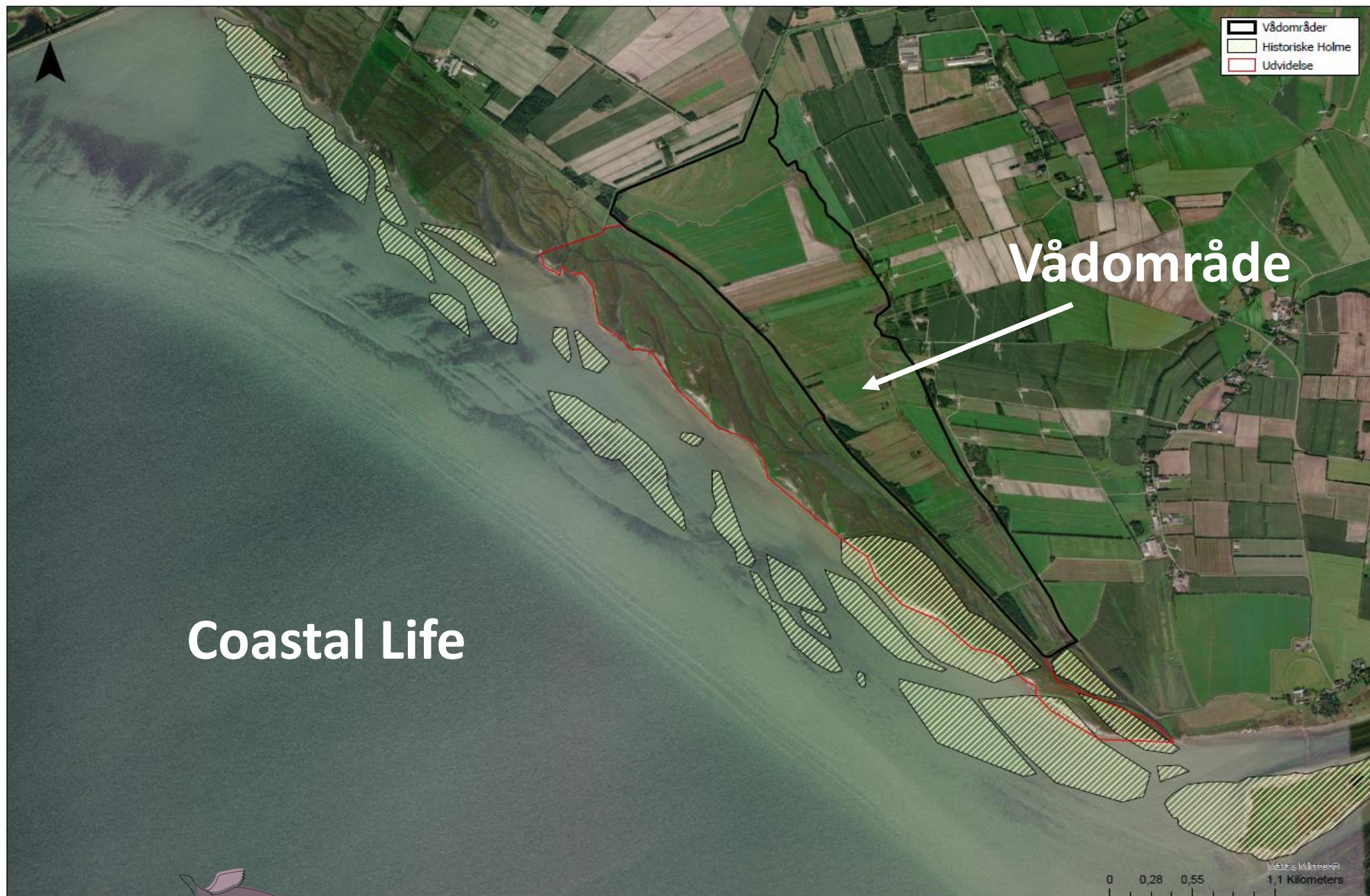
I dag og for 150 år siden



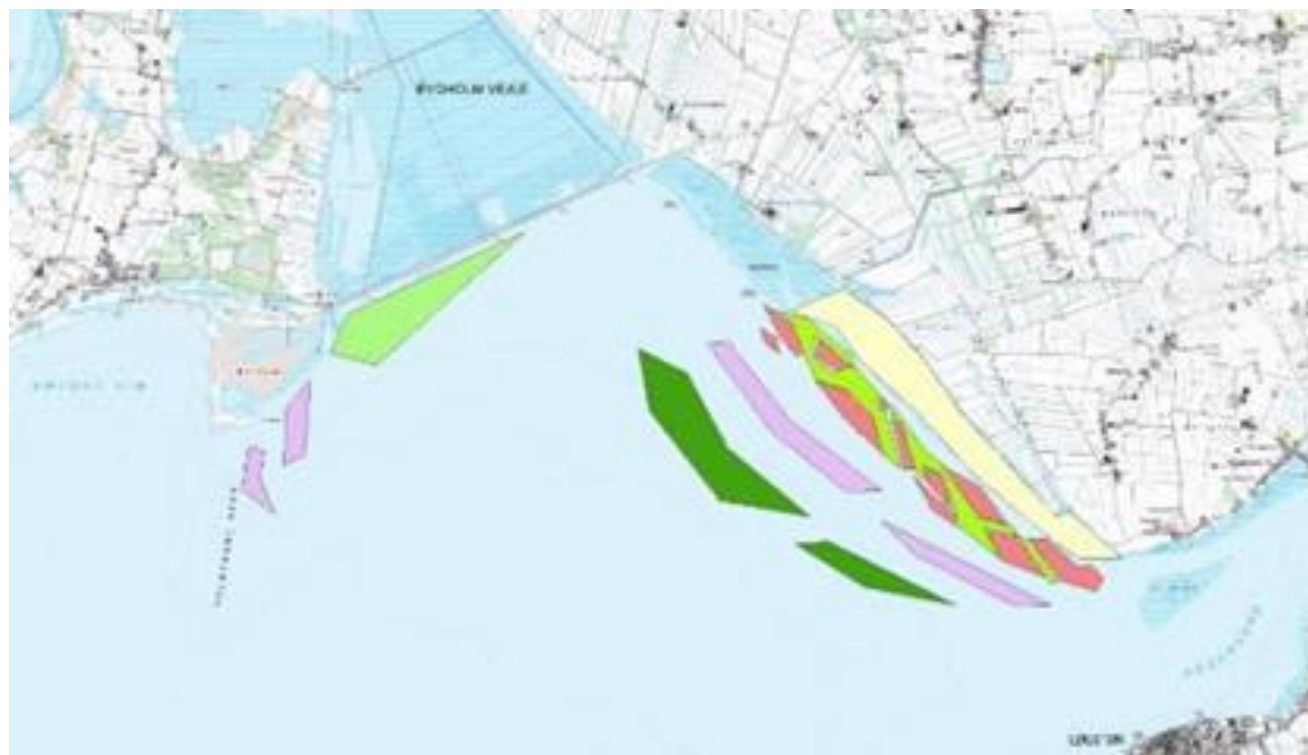
Strandenge og nye holme



Strandenge og nye holme - i kombination med vådområde

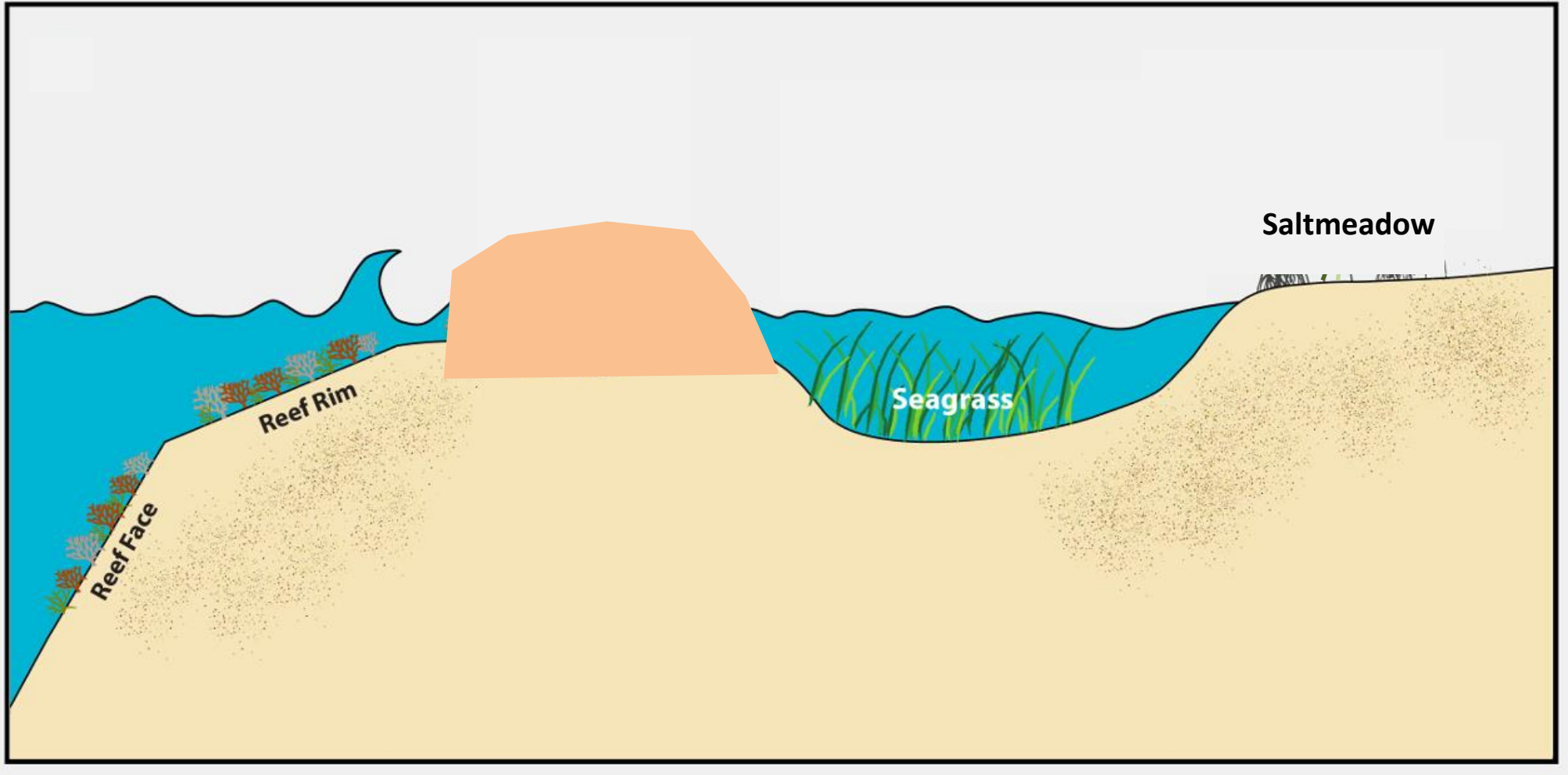


Løgstør Bredning



- Etablering af holme/barriereøer på dybder mellem 1 og 2 meter langs kysten.
- Periodisk oversvømmede loer og laguner indenfor holmene for at sikre en dynamisk lavvandet kystzone.
- Udvidelse af eksisterende stenrevsformationer.
- Etablering af stenrevsformationer langs med og udenfor holmene.
- Etablering af østers – og muslingebanker.
- Etablering af ålegræs mellem holme og kystlinje.
- Optimering af de botaniske forhold på den reetablerede strandeng.

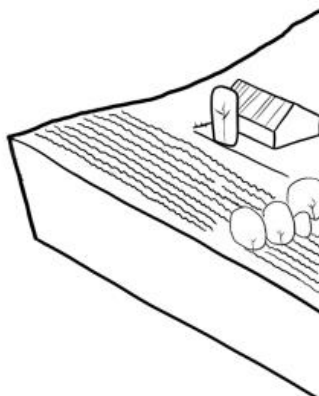




B



DYRKEDE MARK
STRANDENG FORAN SVA



DECEMBER 2021
15. JUNI FONDEN, NATURSTYRELSEN, AAGE V JENSEN FONDEN

HAVVANDSSTIGNINGERNES BETYDNING FOR KYSTNATUREN

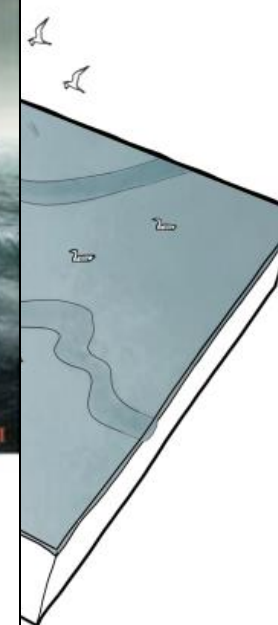
UDVIKLINGSPROJEKT OM NATUR OG KLIMAFORANDRINGER



Havvandsstigningernes betydning for kystnaturen

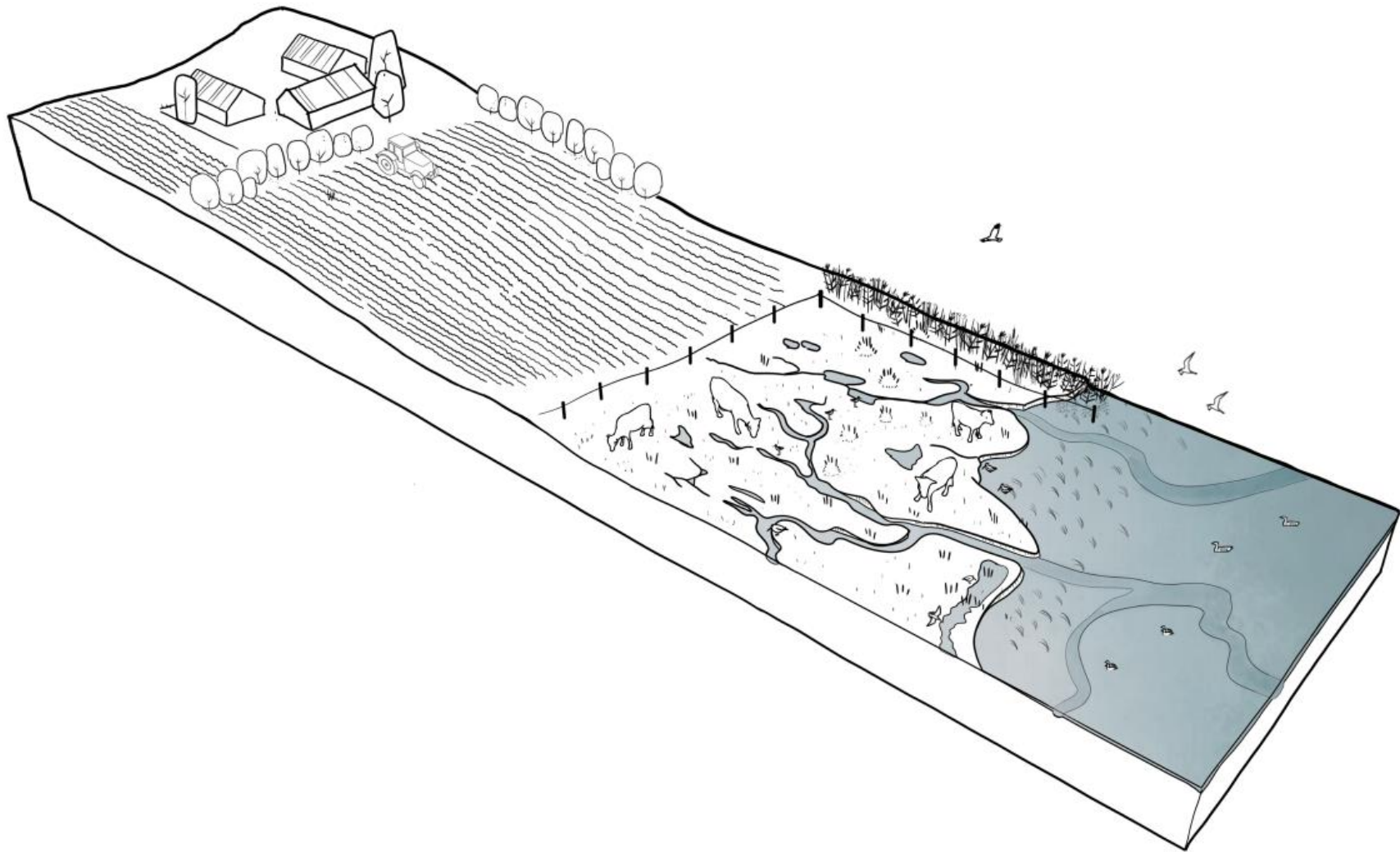
Arkitema - COWI

"The most logical approach is here"



DYRKEDE MARKER

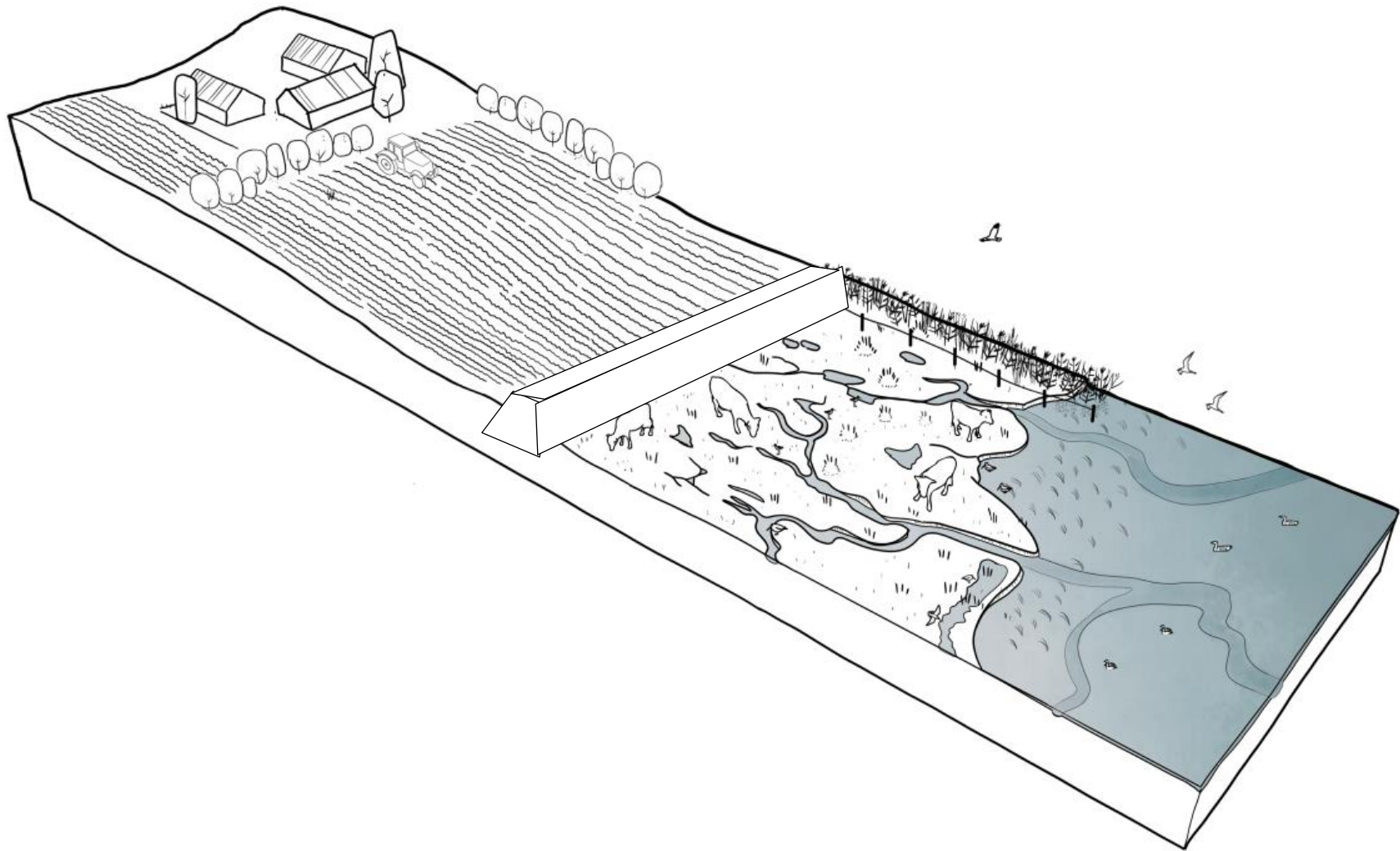
STRANDENG FORAN SVAGT SKRÅNENDE, DYRKEDE MARKER



EKSISTERENDE FORHOLD (2020)

DYRKEDE MARKER

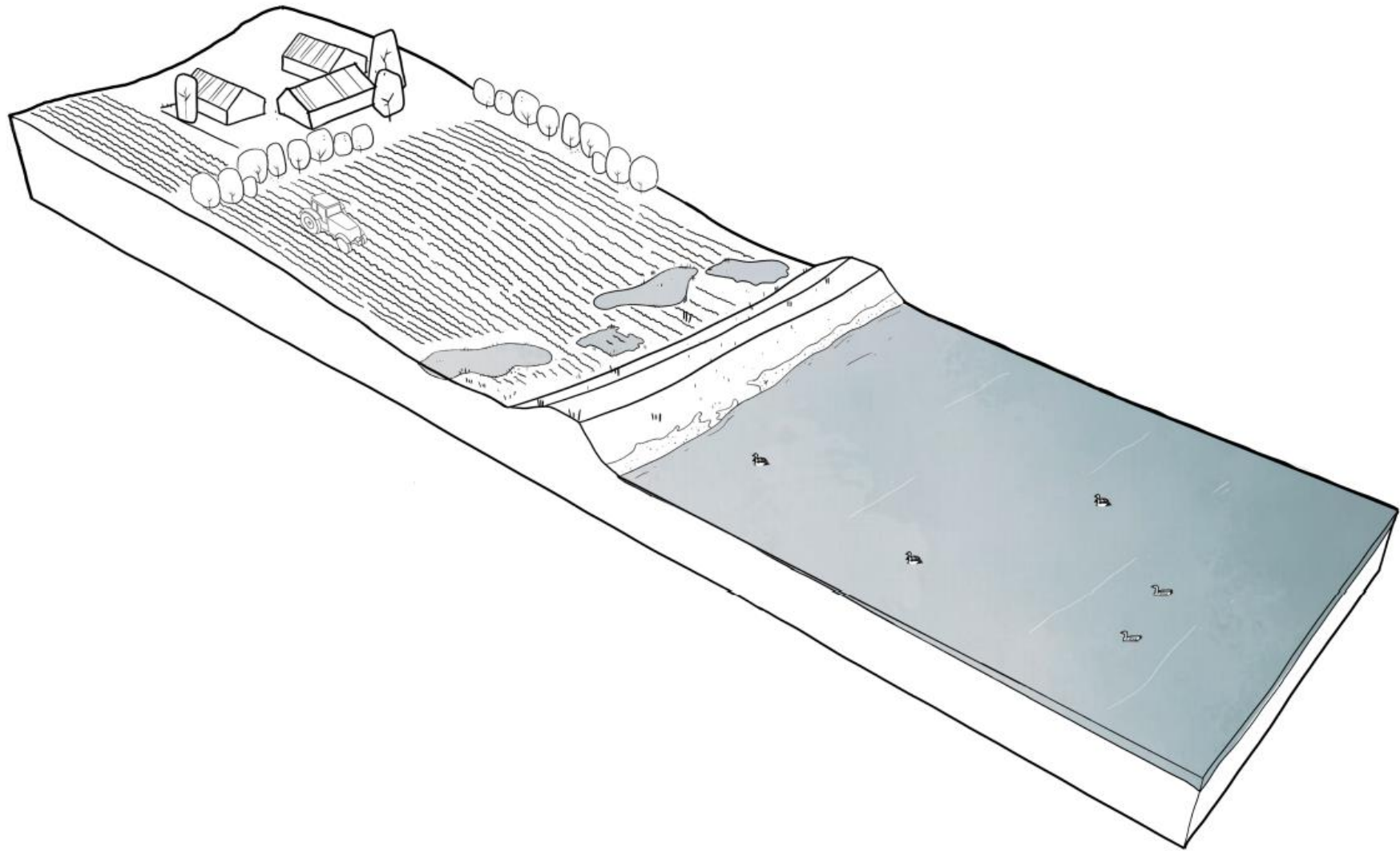
STRANDENG FORAN SVAGT SKRÅNENDE, DYRKEDE MARKER



EKSISTERENDE FORHOLD (2020)

DYRKEDE MARKER

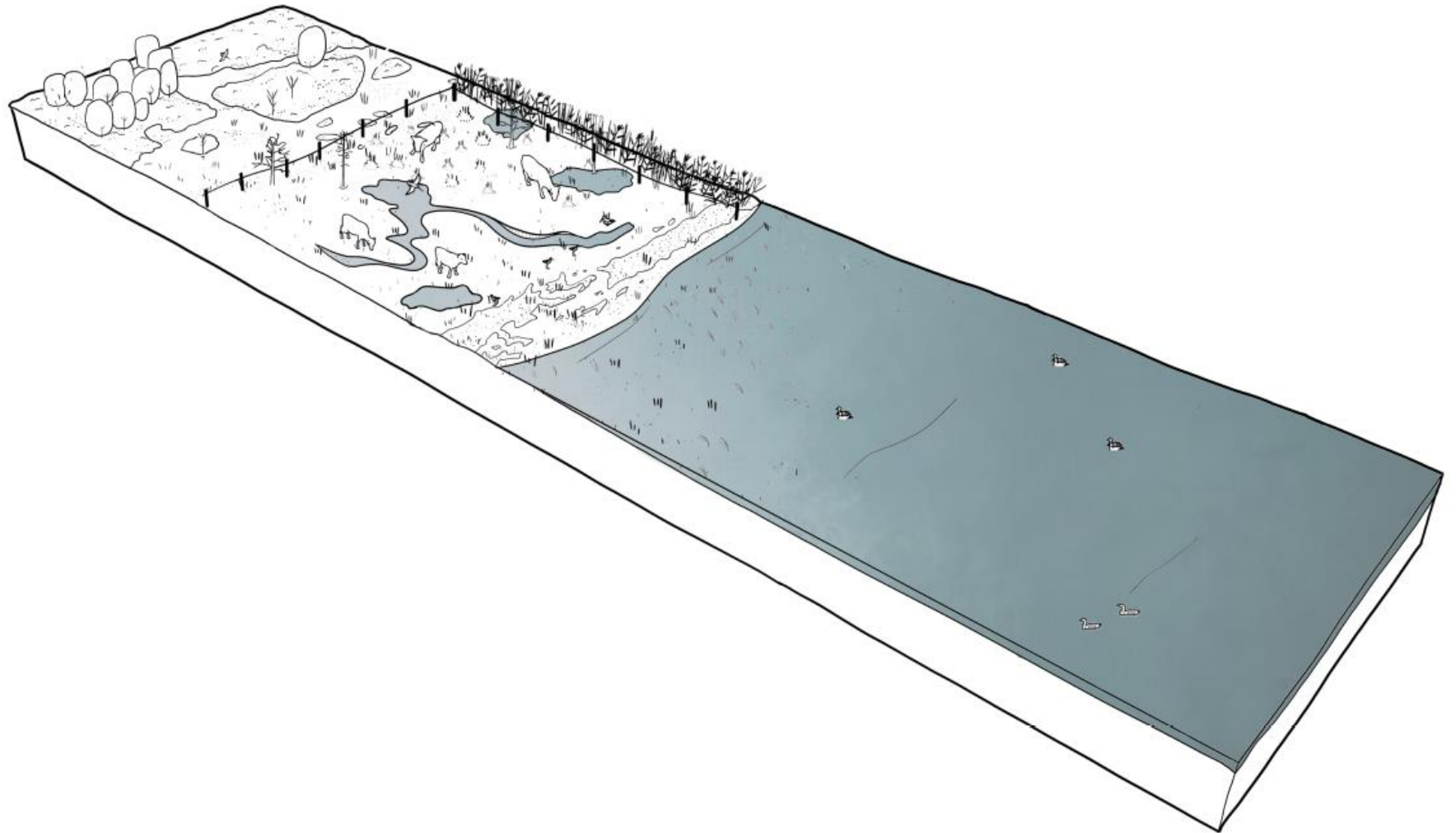
STRANDENG FORSVINDER, MARKER INDDIGES



+100 ÅR (2120)

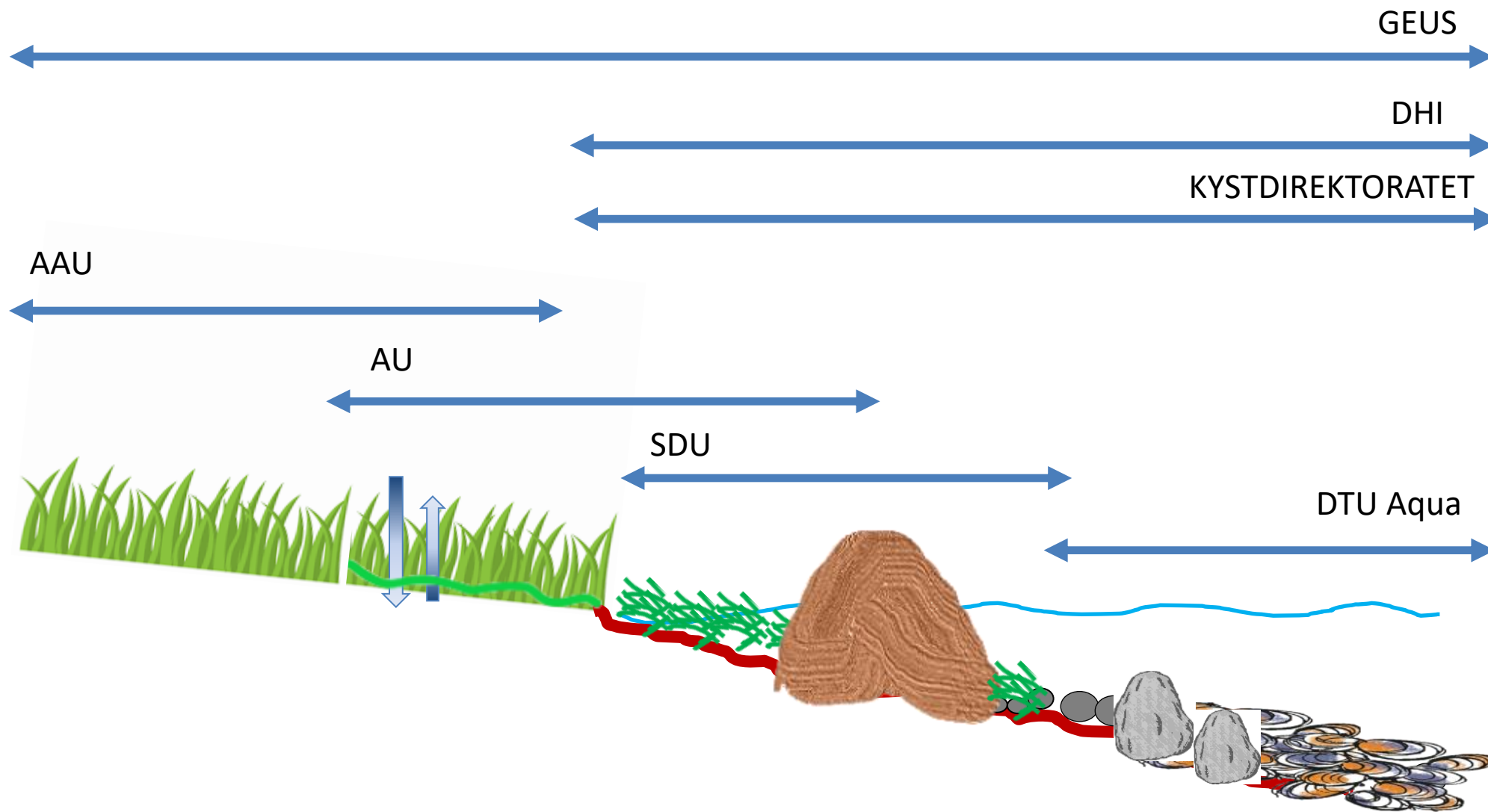
ØVRIG NATUR

STRANDENG ERSTATTER ØVRIG NATUR



+100 ÅR (2120)

Koordinering og samarbejde



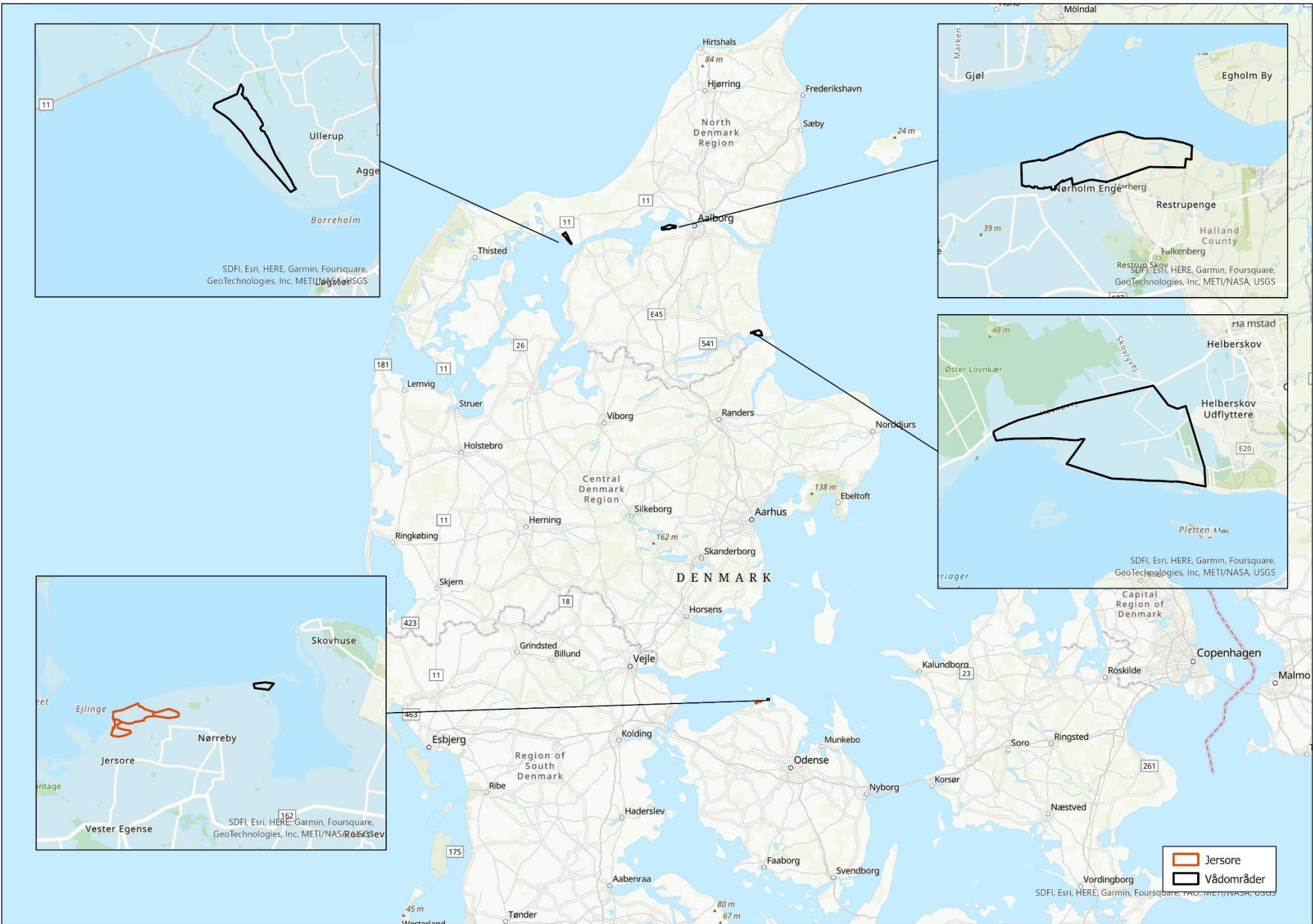
COASTal LIFE

Naturgenopretning i kystzone og på strandeng.

Organisation

Projektejer	Limfjordsrådet v. Aalborg Kommune.
Projektledelse	Limfjordssekretariatet, Nordfyn og Mariagerfjord Kommune
Part, Cofinanser	Nordfyn Kommune Mariagerfjord Kommune Miljøministeriet v. Miljøstyrelsen- Miljøministeriet v. Naturstyrelsen-Fyn og Kystdirektoratet Ørsted NBS DTUaqua
Part	GEUS AAU AU SDU Ornit.dk Limfjordsmuseet
Cofinanser	Aage V. Jensen Naturfond Jammerbugt Kommune Thisted Kommune Vesthimmerlands Kommune Aalborg Kommune

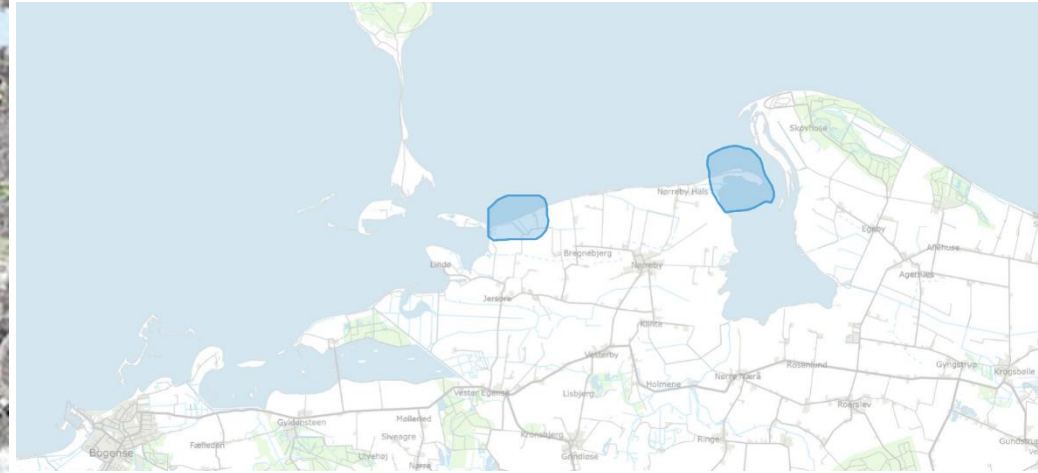




Limfjorden



Nordfyn



Mariager Fjord



Limfjordsrådet

Nørholm Enge Mariager Fjord Nordfyn

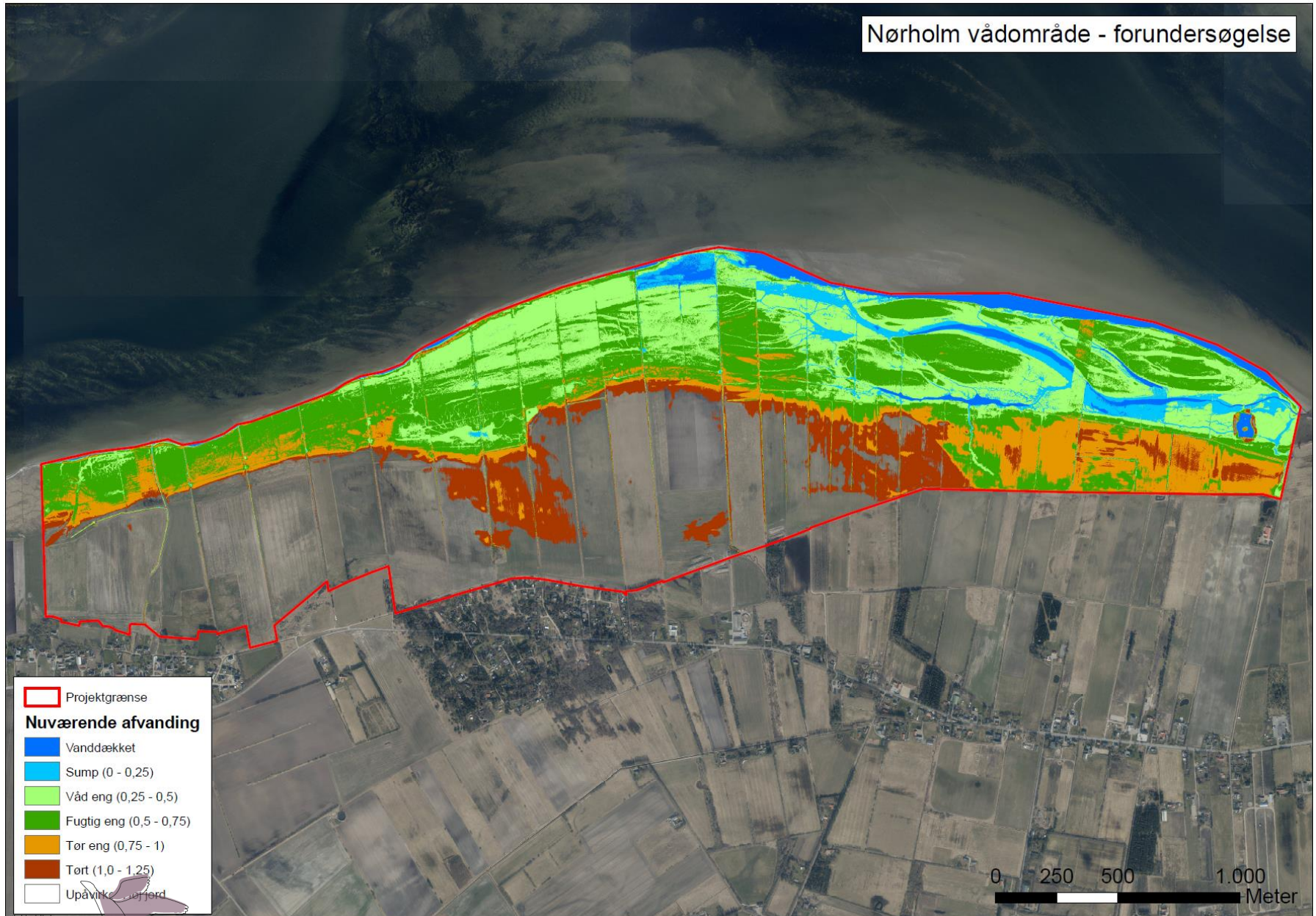
- Reetablering af strandeng og dynamisk kystzone udenfor vådområdeprojekt.
- Optimering af de botaniske forhold på reetablerede strandenge.
- Genopretning af naturlig hydrologi på strandengen.
- Udvidelse af eksisterende små ålegræsbede.
- Optimering af naturgenopretningsområdet (strandeng) for fuglelivet.



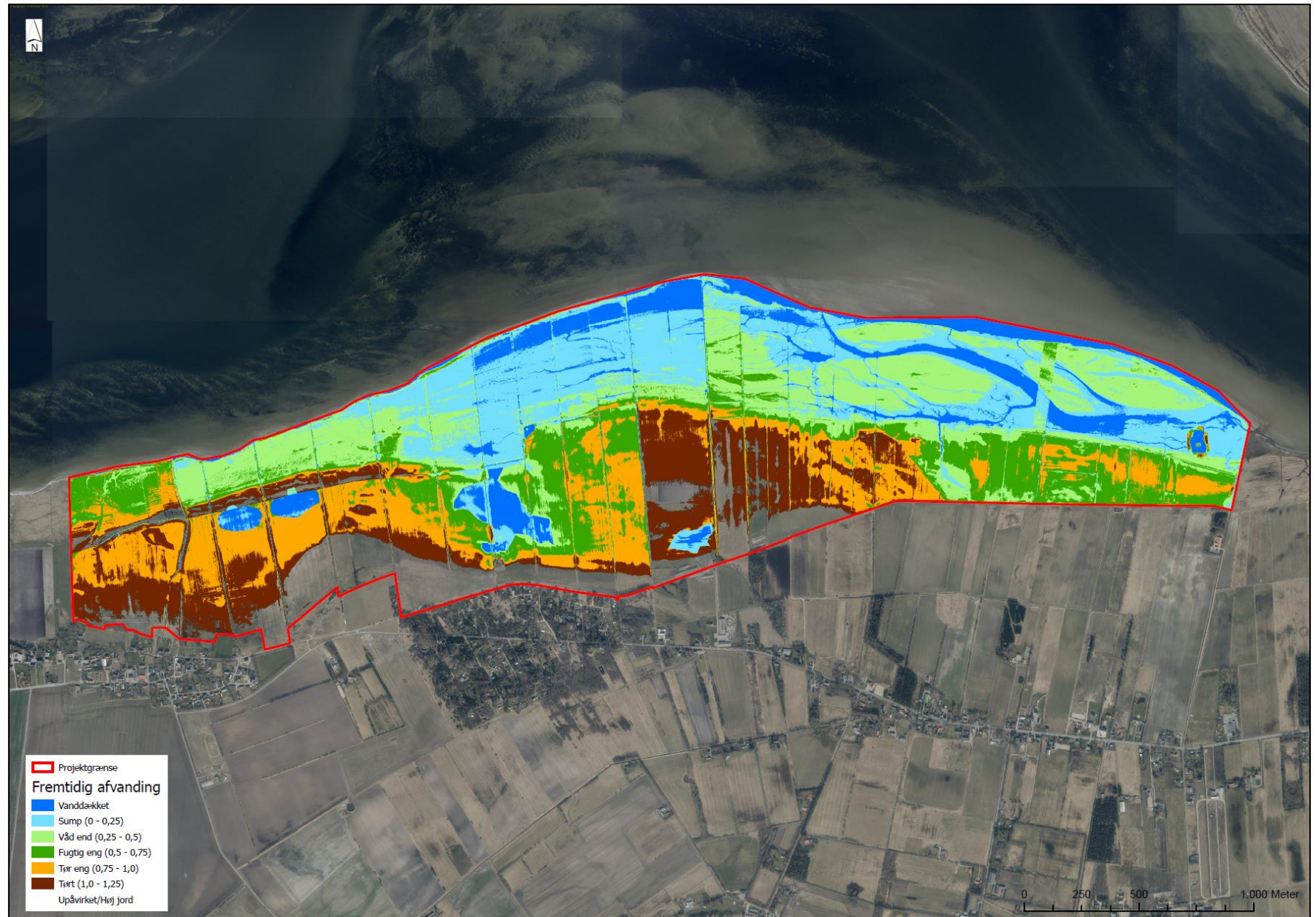
Nørholm



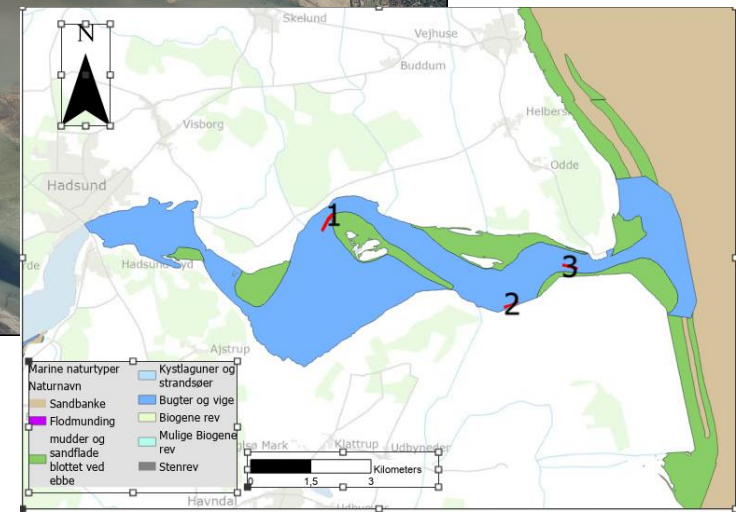
Nørholm



Nørholm



Mariager Fjord



Nordfyn



COASTal LIFE

Naturgenopretning i kystzone og på strandeng.

Tidsplan

ACTIVITY	2022				2023				2024				2025				2026				2027				2028			
	Q 1	Q 2	Q 3	Q 4	Q 1	Q 2	Q 3	Q 4	Q 1	Q 2	Q 3	Q 4	Q 1	Q 2	Q 3	Q 4	Q 1	Q 2	Q 3	Q 4	Q 1	Q 2	Q 3	Q 4	Q 1	Q 2	Q 3	Q 4
Administration og projektledelse																												
Forundersøgelser																												
Ekspert gruppe																												
Tilladelser																												
Anlæg																												
Monitering																												
Effektvurdering																												
Formidling																												



Tak for opmærksomheden

Ørsted

AAGE V.
JENSEN
NATURFOND



AALBORG
UNIVERSITET



AARHUS
UNIVERSITET



Miljøministeriet
Miljøstyrelsen



Miljøministeriet
Naturstyrelsen

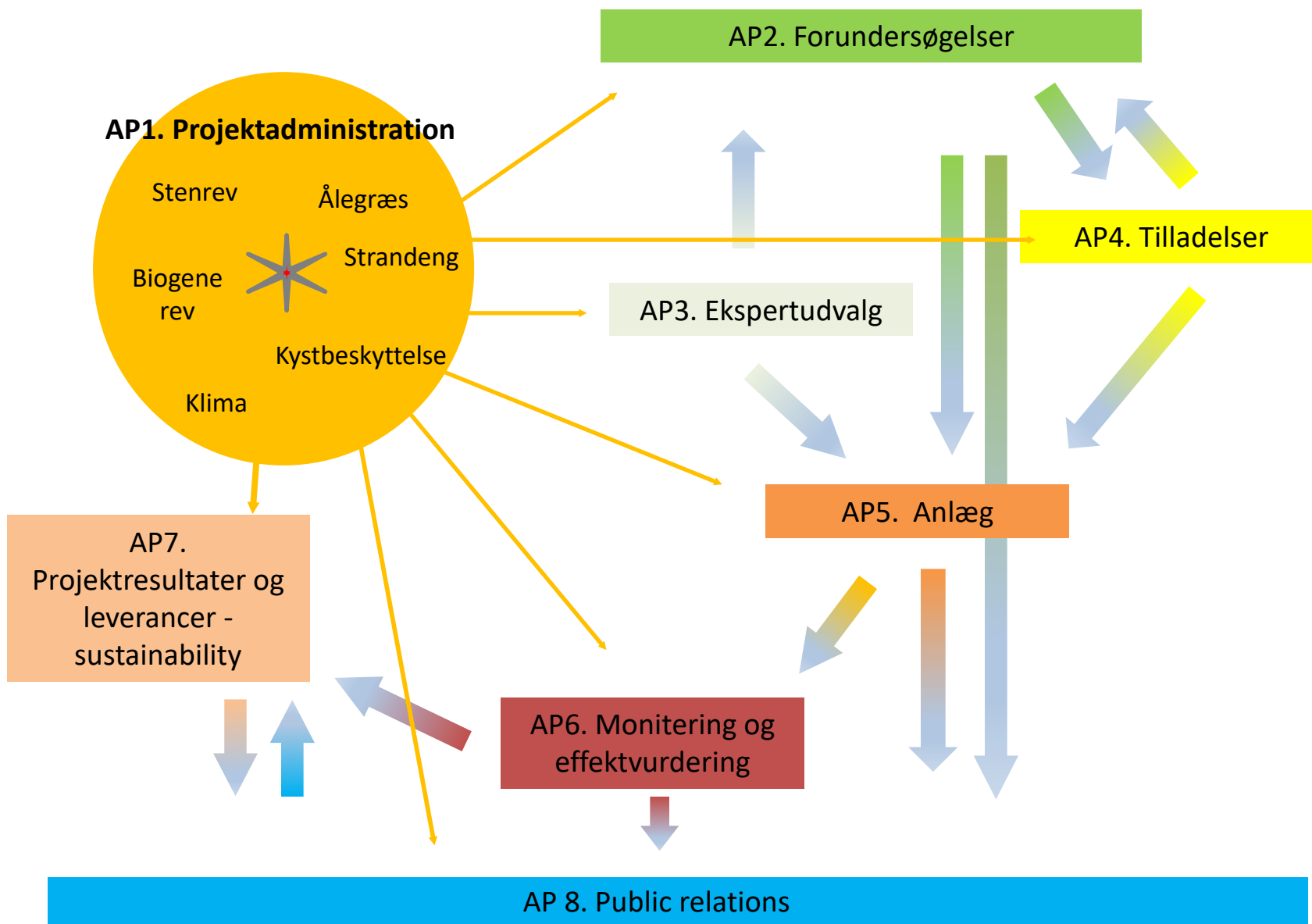


Miljøministeriet
Kystdirektoratet

Limfjordsrådet



arbejdspakker



Helheder og synergi

B



Reef Flat



Transplantation af ålegræs

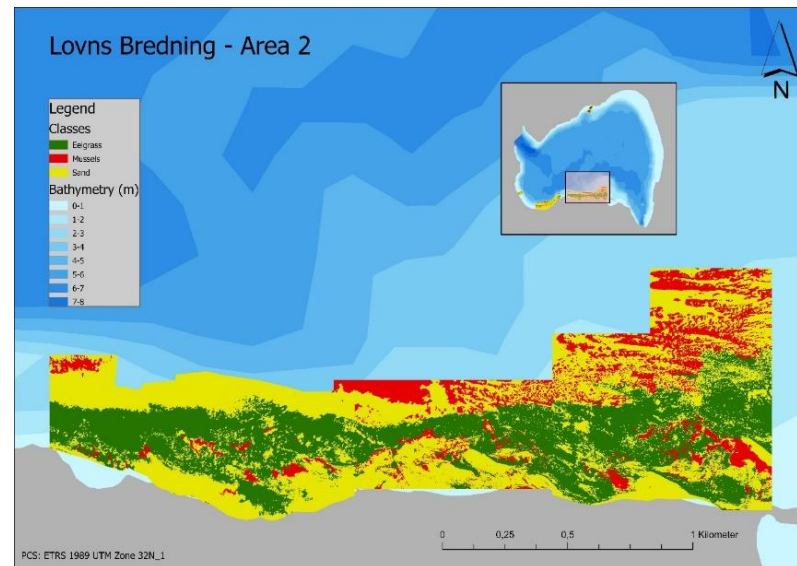
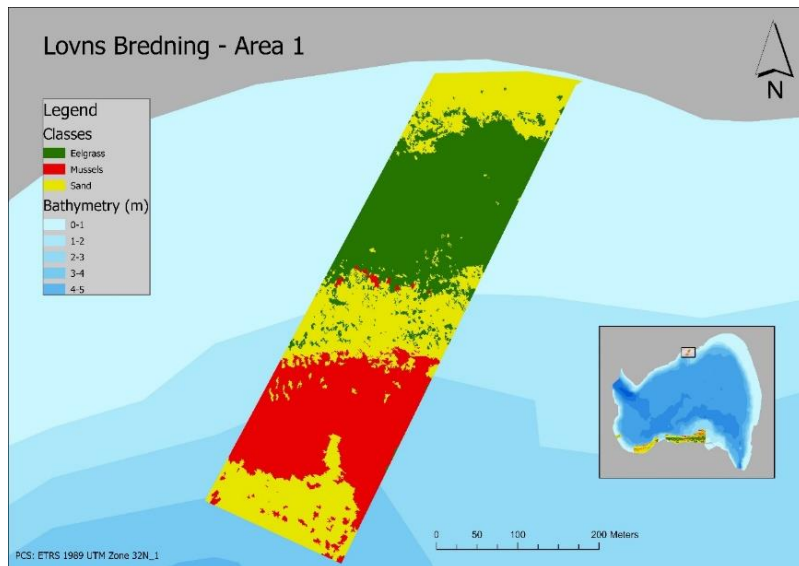


Økosystemtjenester

- Binder/begraver N, P og C
- Øger sigtddybde
- Reducerer klorofylkonc.
- Nedsætter resuspension
- Øger biodiversitet



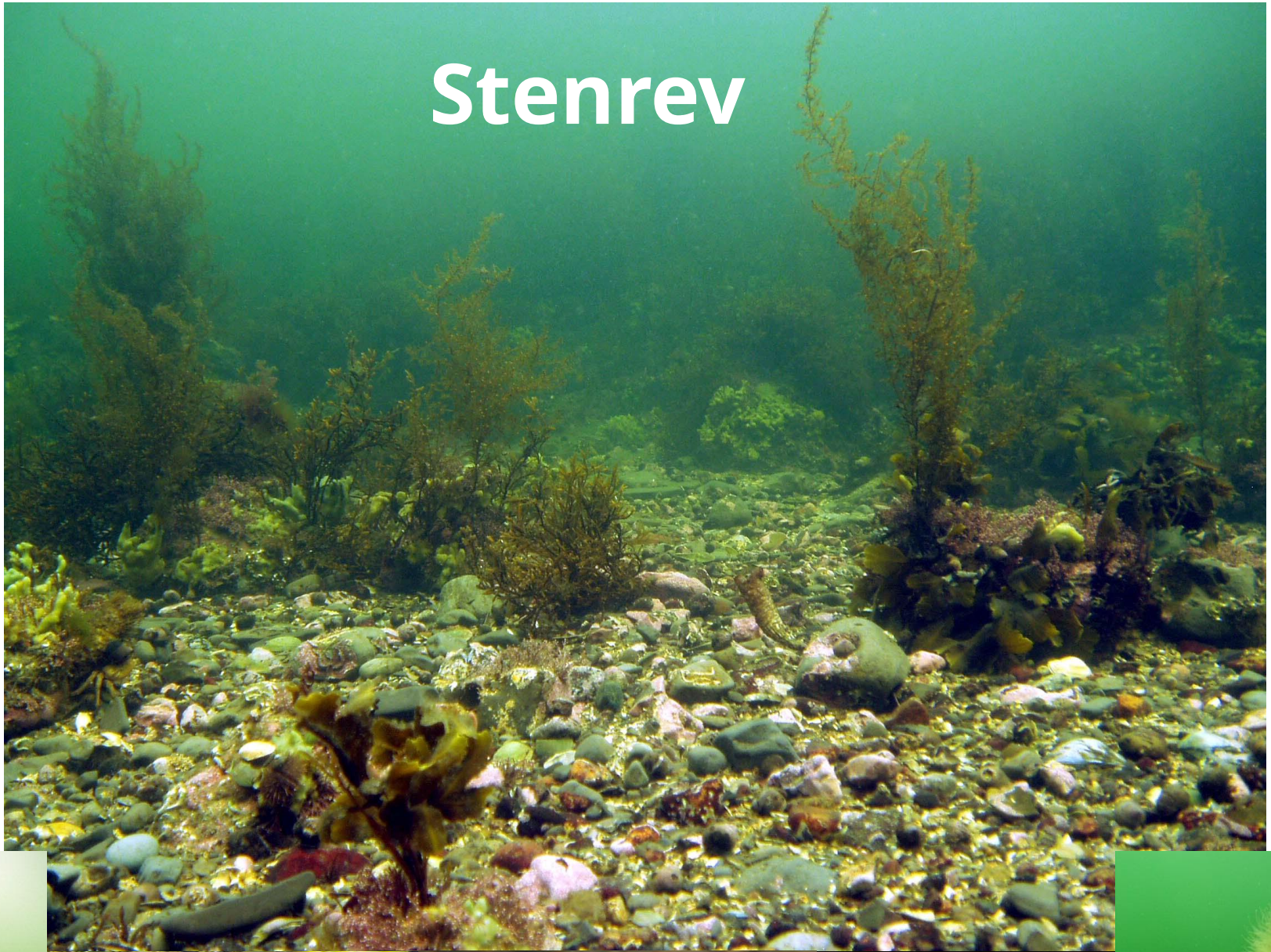
Kombinere ålegræs og muslinger



- Muslinger
- Ålegræs



Stenrev



Arbejdsplaner og Tasks

Work Package	Task	
1 1 1	Project management and coordination	1.1 Project management and administration
		1.2 Supervision
		1.4 After-LIFE plan
2 2 2 2 2 2 2 2 2 2 2 2	Feasibility studies	2.1 Geological studies
		2.2 Hydrodynamic modelling
		2.3 Design and location of lagoons and ponds
		2.4 Design and location of islets and barrier islands
		2.5 Design and location of stone reefs
		2.6 Recycling of sediment
		2.7 Complementary activities
		2.8 Carbon sequestering
		2.9 Screening of potential for eelgrass re-establishment and a strategy definition for eelgrass re-establishment
		2.10 Oysters and mussels. Location of oyster – and mussel beds and determination of establishment strategy
		2.11 Registration of birds and assessment of necessary measures.
		2.12 Botanical conditions on salt meadows. Assessment of necessary measures.
		2.13 Facilitating landowner agreements
3	Expert panel	3.1 Advisory Board
4	Project preparation	4.1 Project preparation
5 5 5 5 5 5 5 5 5	Habitat restoration	5.1 Reestablishment of salt meadows and appropriate bird habitats – Complementary Actions
		5.2 Establishment of islets
		5.3 Establishment of stone reefs
		5.4 Climate protection
		5.5 Establishment of eelgrass beds
		5.6 Establishing oyster – and mussel beds
		5.7 Sand capping
		5.8 Conservation actions in reestablished habitats. Grazing
		5.9 Landowner compensation

6	Monitoring, impact assessments and follow-up studies	6.1 Development of Eelgrass
6		6.2 Development in bird stocks
6		6.3 Development in botanical conditions
6		6.4 Reefs. Biodiversity and development
6		6.5 Oysters and mussels
6		6.6 Climate impact in salt and freshwater meadows and eelgrass beds
7	Sustainability	7.1 Ecosystem services
7		7.2 Coastal dynamic
7		7.3 Climate impact in salt and freshwater meadows and eelgrass beds – Carbon retention, climate gasses
7		7.4 Exploitation of project results: Analyzes, Guidance papers, Best practices etc.
7		7.5 Exploitation of project results. Replication.
7		7.6 VERRA document development
7		7.7 Preparing management plans for project sites
8	Public relations	8.1 General dissemination and communication
8		8.2 Stakeholder involvement
8		8.3 Events og other public related activities
8		8.4 Recreative physical structure. Nudging
8		8.5 National and international networking

