



# wolkom!

(Welcome)



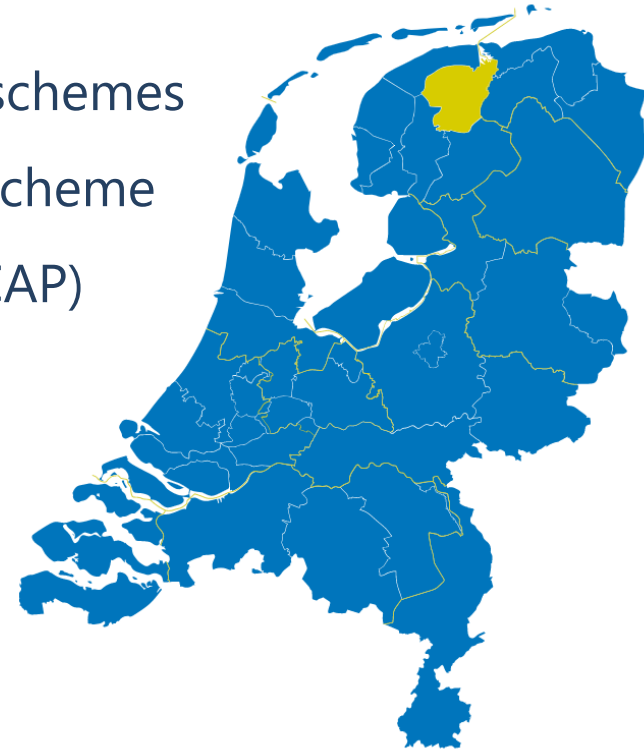
# Program

- Farmer collectives in the Netherlands
- This collective: Noardlike Fryske Wâlden association
- Management of agricultural Nature and Landscape
- Member services
- Projects and other activities



# Farmer collectives in NL

- 40 farmer collectives in the Netherlands
- Over 11.000 participants
- Over 114.000 hectares agri-environment schemes
- Carry out the Agri-Environment Climate Scheme of the EU's Common Agricultural Policy (CAP)
- Bottom-up collective approach
- Joined forces in the organization
- Boerennatuur (Farmers&Nature)





# NFW

- Started in 2002 as the legal umbrella association of 6 agri-environment cooperatives
- In 2016 change over to an association with 5 departments
- 5 municipalities, total area of ca. 60.000 ha
- About 800 members
- Of which 565 active participants in the Agri-Environment Climate Schemes
- Over 4.500 hectares agri-environment schemes

## General meeting

Department  
Achtkarspelen

Department IKG

Department W&F

Department VALD

Department SMEL

Board

Office/execution

Agri-Environment  
Scheme (AES)

Fjildlab

Projects

### Theme groups

- *Nature and landscape*
- *Farmland birds*
- *Agriculture, Environment, Water and Economy*
- *Communication*

## Geografische begrenzing deelgebieden

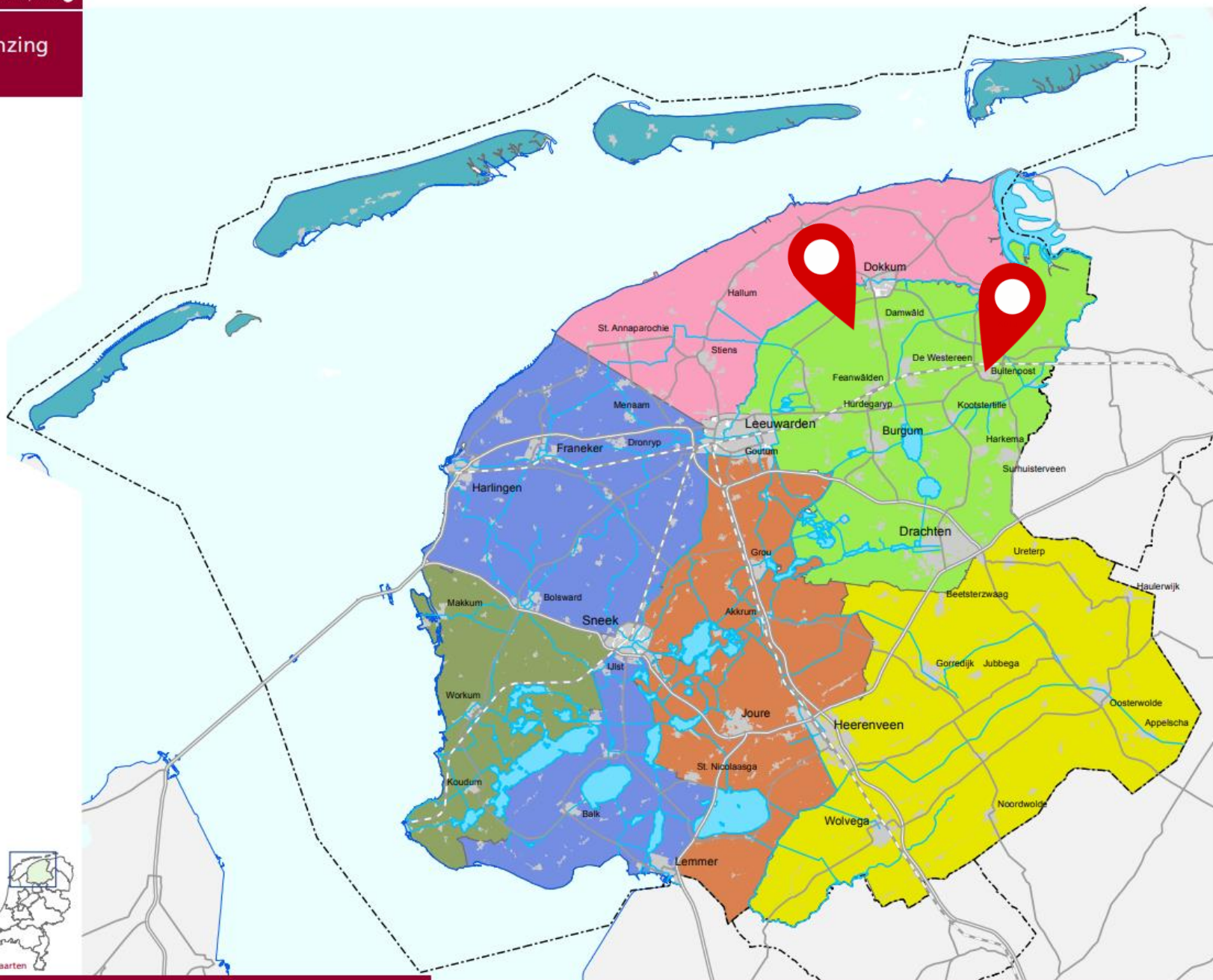
### gebied

- De Waddeneilanden
- Midden Fryslân
- Noordelijke Wouden
- Noordoost Fryslân
- West Fryslân
- Zuidwest Fryslân
- Zuidoost Fryslân

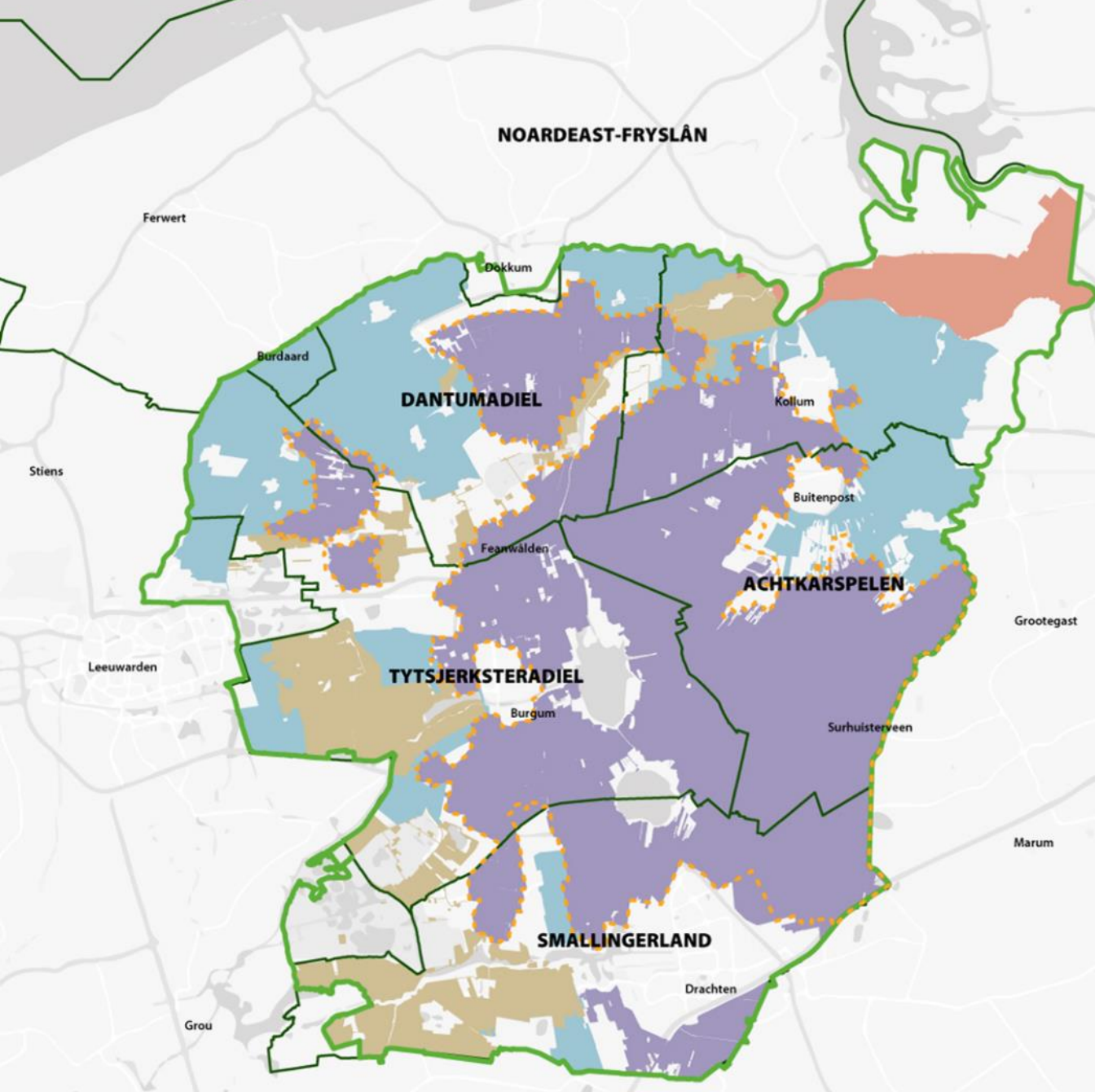
0 2,5 5 7,5 10 12,5 km

Q:\urenstmx\BEP2016-bijlagen.mxd

kaart: afdeling Informatievoorziening - Cijfers & Kaarten







-  Droge Dooradering
-  Open Grasland
-  Natte Dooradering
-  Open Akker
-  Werkgebied NFW
-  Gemeentegrenzen
-  Nationaal Landschap NFW

**KAART  
WERKGEBIED**  
**NOARDLIKE FRYSKÉ WÂLDEN**



# NFW

- Trusted partner for farmers, province and other regional partners
- We serve as final beneficiaries for the subsidy of the Agri-Environment Climate Scheme
- We have a collective contract with the government
- And an individual contract with the farmer





# From request to execution

- At the start we submit a request for budget to the province of Friesland
- Based on data collected from the NFW-area (target species, monitoring, demand from farmers, etc.)
- Province issues a decision for a period of 6 years
- Collective enters into contracts with farmers
- Annual payment at the end of the year to the collective
- Collective pays farmers



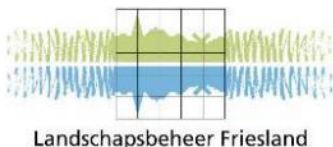
# Coordination with regional parties

- At least once a year with all regional parties involved
- Theme groupings which meet at least 4 times a year





# Regional parties we work with:



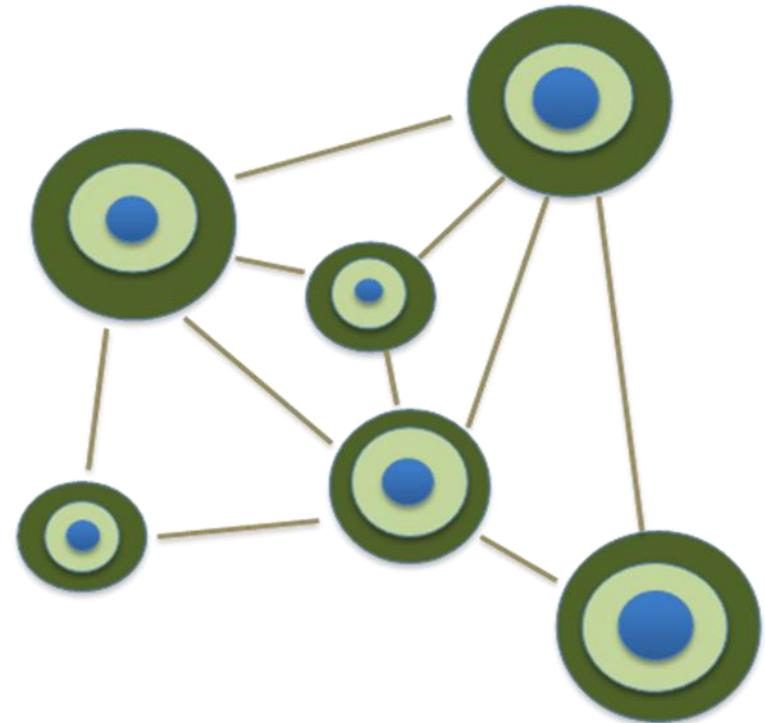


# In practice

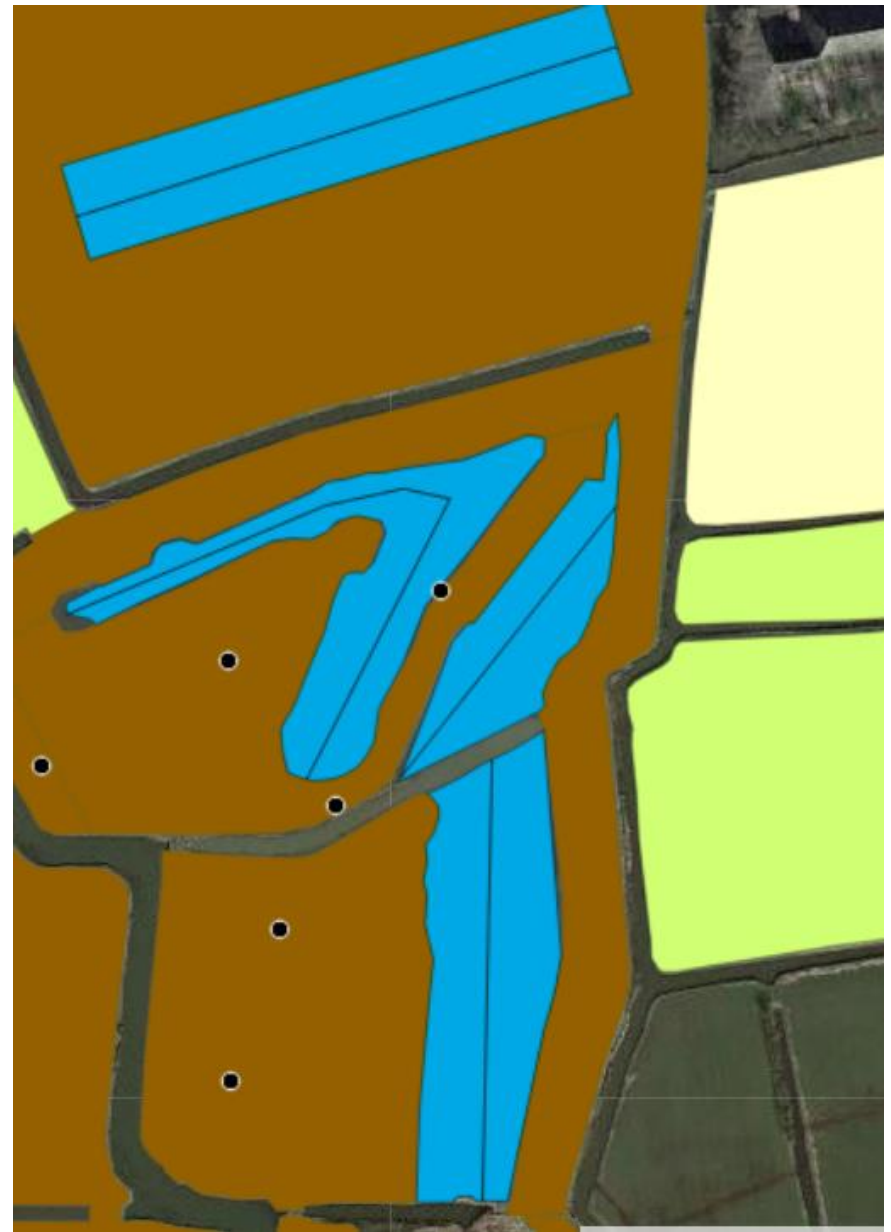
- 565 participants
- 3.900 ha for meadow birds
- 1.600 ha foraging area for geese
- 60 ha for farmland birds
- 212 ha of hedges and hedgerows
- 60 ha of herbal rims located next to hedges and hedgerows
- 331 natural ponds (in Dutch: poelen, pingo's)
- 115 ha of measures to improve water quality
- Over € 5,5 million per year

# Meadow birds

- 3.900 ha
- Measures:
  - *Wet areas*
  - *Areas of rest*
  - *Herb-rich areas*
  - *(Extensive) grazing*
- Variation is important
- Monitoring of nests and breeding pairs











# Farmland birds



- 60 ha
- Measures:
  - Foraging area (during winter)
  - Special attention for edges and corners
  - Strips with forage crops in combination with fallow strips with herbs (in Dutch: vogelakker)
- Monitoring of birds (in 2023 also insects)





# Hedges and hedgerows

- Unique area → 'Nationaal Landschap Noardlike Fryske Wâlden'
- Different types of landscape elements:



'Dykswâlen'



'Elzensingels'

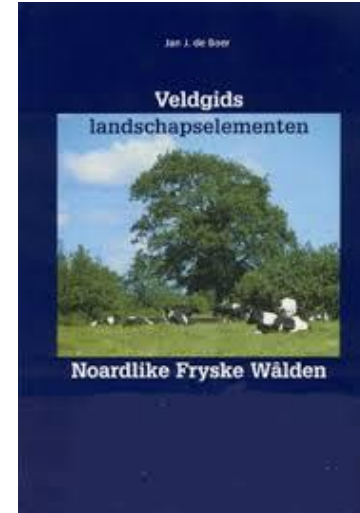


'Pingo's en poelen'



# Hedges and hedgerows

- 212 ha hedges and hedgerows
- 331 natural ponds
- Monitoring of birds, bats and habitat characteristics
- Maintenance cycle:
  - Annual > prune some branches
  - Periodic (once in 7 years) > prune 'overhanging' branches
  - Major (once in 21-25 years) > cut down complete hedgerow except for a few trees or bushes







# Sharing knowledge



- Farmers, field coordinators, volunteers, staff, residents of the area and other interested parties.
- Meetings, excursions, other activities

# Supervision

- Netherlands Enterprise Agency (RvO) and Dutch Food Safety Authority (NVWa) check randomly
- NFW's own inspection ('schouw') also checks randomly:
  - Based on a positive approach
  - If possible: possibility of recovery
- In case of deviations, a discount on the fee is possible







# Future

- Basically the collective system works, in the next 6 years we have to develop it further
- Farmers/members are motivated to do more
- NFW would like to grow also
- New insights lead to new management options
- Self-managing: we proved ourselves already for 7 years, we would like to become even more self-managing



# Projects

- Field lab (Fjildlab)
- Area offer ('Gebiedsofferte')
- Projects for recovery of the landscape
- Projects for further development of meadow bird areas
- Plan of action for Godwit
- And many more...



# Public support

- Campaigns to involve citizens and businesses in what we do and to create support:



Hosts of the landscape  
(‘Gastheren van het landschap’)



Become a friend of NFW



# More information

[www.noardlikefryskewalden.nl](http://www.noardlikefryskewalden.nl)

**Facebook:** Vereniging Noardlike Fryske Wâlden

**Instagram:** @noardlikefryskewalden

**Twitter:** Vereniging NFW

**Linkedin:** Vereniging Noardlike Fryske Wâlden

**Youtube:** vereniging Noardlike Fryske Wâlden



# Questions?





