



# Plante Kongres





# Personal Introduction



- Mr. Albert van der Ploeg,  
chairman of the board



- Mrs. Gerrie Visser,  
general secretary/director



# Inspiring you by telling about:

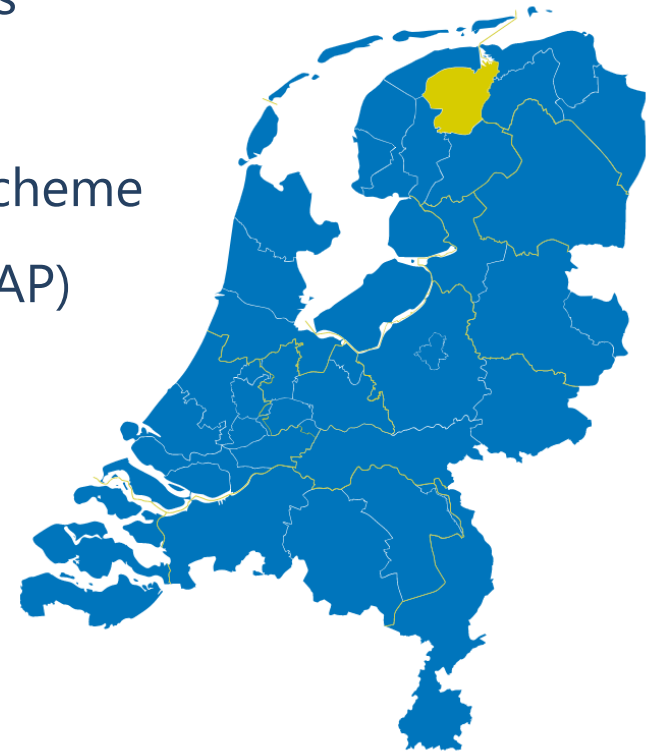
- Farmer collectives in the Netherlands including its history
- In short: management of agricultural Nature and Landscap
- Our collective: Noardlike Fryske Wâlden association
  - history
  - how do we work and with whom do we cooperate
  - how does it work
  - benefits for members and governments
  - a day at the job
- Future perspectives





# Farmer collectives in NL

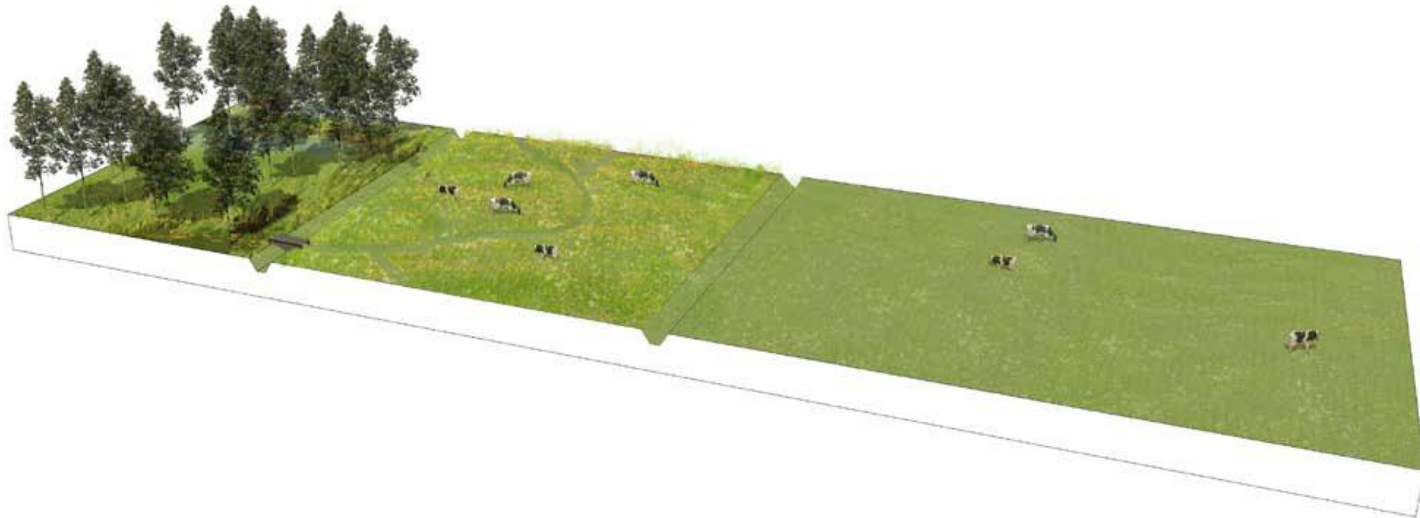
- 40 farmer collectives in the Netherlands
- Over 11.000 participants, 114.000 hectares agri-environment schemes
- Carry out the Agri-Environment Climate Scheme of the EU's Common Agricultural Policy (CAP)
- Bottom-up collective approach
- Joined forces in the organization
- BoerenNatuur (Farmers&Nature)
- Formed in 2015 as a collective system







# Agricultural nature and landscape management





# Agricultural nature and landscape management

## Policy Province

A - Nature reserve plan (reviewed annually)

B - Agricultural Nature & Landscape reserve (ANLb)



## Implementation management

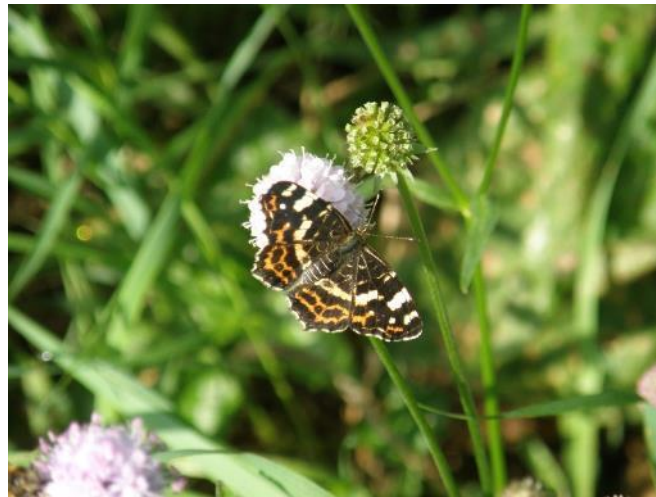
- A. The provinces set the ambitions and nature goals for an area and elaborate these in their provincial nature management plans.
- B. This states where agricultural nature management will be applied.
- C. Then it is up to agricultural collectives, regional partnerships of farmers, to determine how agricultural nature management is applied in those areas.

The agricultural collectives can submit a subsidy application to the province. In this application, agricultural collectives show which nature performances they want to achieve at area level and how these contribute to the goals of the nature management plan.



# Agricultural nature and landscape management

- What:** Target species by habitat, improvement of water quality and climate mitigation and adaptation.
- Where:** Boundary via 4 habitats, including landscape veining, open farmland and water- and climatemanagement
- With which:** Funding from provinces and CAP EU.



Source: Province of Fryslân





# NFW

- Started in 2002 as the legal umbrella association of 6 agri-environment cooperatives
- In 2016 change over to an association with now 6 departments
- 5 municipalities, total area of ca. 60.000 ha
- About 800 members
- Of which 565 active participants in the Agri-Environment Climate Scheme
- Over 4.500 hectares agri-environment schemes







# NFW

## General meeting

Department  
Achtkarspelen

Department IKG

Department W&F

Department VALD

Department SMEL

Department EL

Board

Office/execution

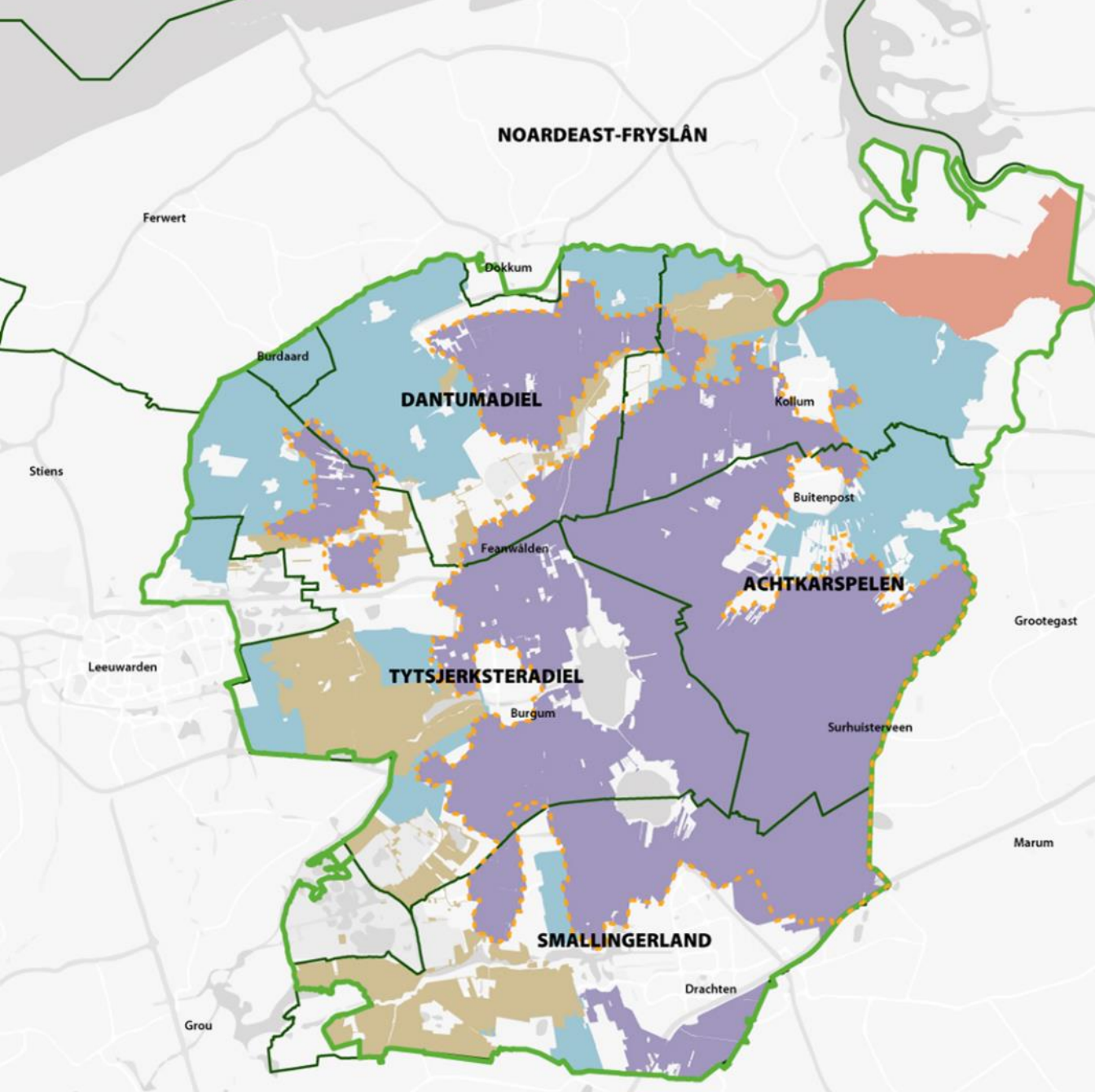
Agri-Environment  
Scheme (AES)

Fjildlab

Projects

### Theme groups

- Nature and landscape
- Farmland birds
- Agriculture, Environment, Water and Economy
- Communication



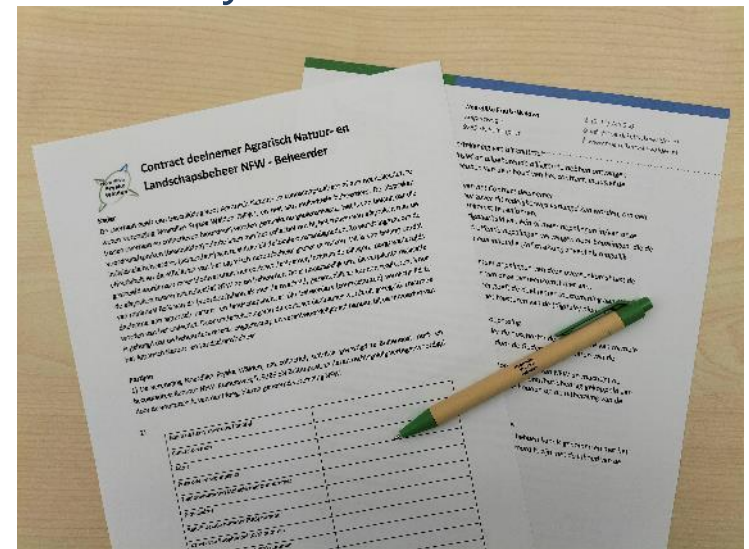
- Droge Dooradering
- Open Grasland
- Natte Dooradering
- Open Akker
- Werkgebied NFW
- Gemeentegrenzen
- Nationaal Landschap NFW

**KAART  
WERKGEBIED  
NOARDLIKE FRYSKÉ WÂLDEN**



# NFW

- Trusted partner for farmers, province and other regional partners
- We serve as final beneficiaries for the subsidy of the Agri-Environment Climate Scheme
- We have a collective contract with the government
- And an individual contract with the farmer







# From request to execution

- At the start we submit a request for budget to the province of Friesland
- Based on data collected from the NFW-area (target species, monitoring, demand from farmers, etc.)
- Province issues a decision for a period of 6 years
- Collective enters into contracts with farmers
- Annual payment at the end of the year to the collective
- Collective pays farmers





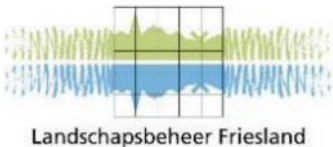
# Coordination with regional parties

- At least once a year with all regional parties involved
- Theme groupes which meet at least 4 times a year





# Regional parties we work with:







# In practice

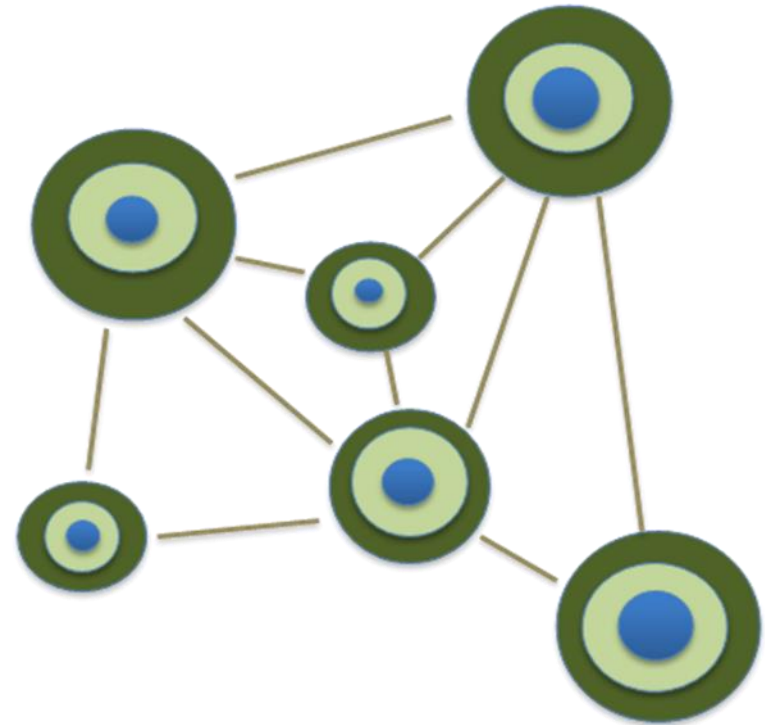
- 565 participants
- 3.900 ha for meadow birds
- 1.600 ha foraging area for geese
- 60 ha for farmland birds
- 212 ha of hedges and hedgerows
- 60 ha of herbal rims located next to hedges and hedgerows
- 331 natural ponds (in Dutch: poelen, pingo's)
- 115 ha of measures to improve water quality
- Over € 5,5 million per year



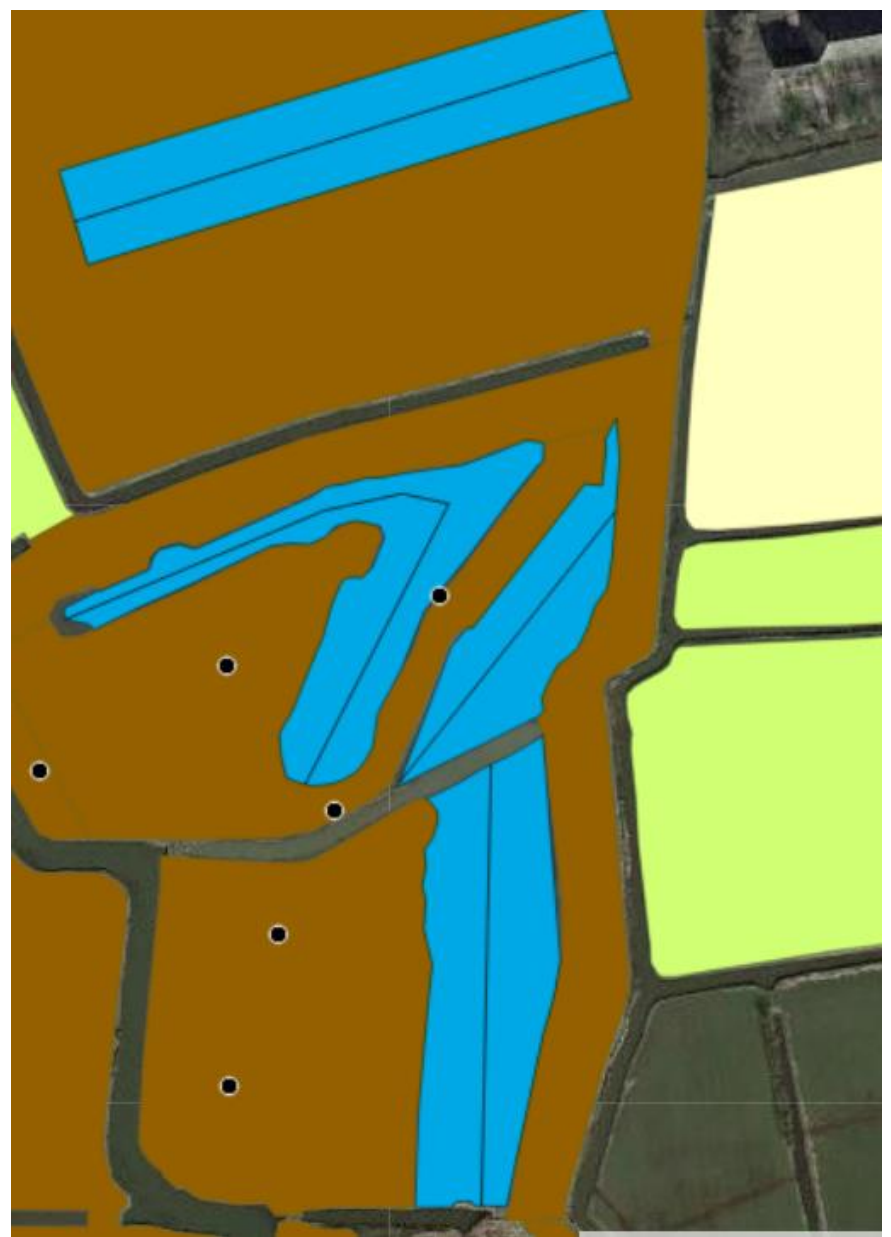


# Meadow birds

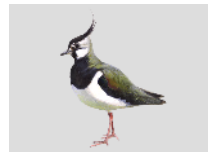
- 3.900 ha
- Measures:
  - *Wet areas*
  - *Areas of rest*
  - *Herb-rich areas*
  - *(Extensive) grazing*
- Variation is important
- Monitoring of nests and breeding pairs







● =





# Farmland birds

- 60 ha
- Measures:
  - Foraging area (during winter)
  - Special attention for edges and corners
  - Strips with forage crops in combination with fallow strips with herbs (in Dutch: vogelakker)
- Monitoring of birds (in 2023 also insects)







# Hedges and hedgerows (dry meandering veins)

- Unique area → 'Nationaal Landschap Noardlike Fryske Wâlden'
- Different types of landscape elements:



'Dykswâlen'



'Elzensingels'

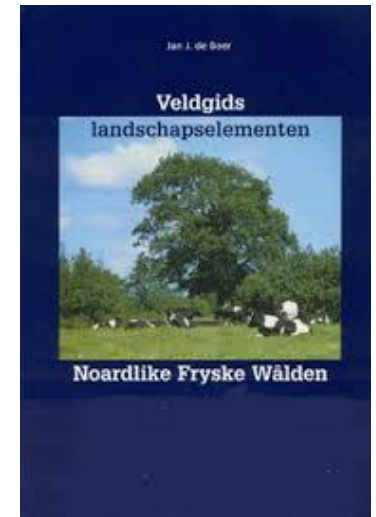


'Pingo's en poelen'



# Hedges and hedgerows

- 212 ha hedges and hedgerows
- 331 natural ponds
- Monitoring of birds, bats and habitat characteristics
- Maintenance cycle:
  - Annual > prune some branches
  - Periodic (once in 7 years) > prune 'overhanging' branches
  - Major (once in 21-25 years) > cut down complete hedgerow except for a few trees or bushes







# Sharing knowledge



- Farmers, field coordinators, volunteers, staff, residents of the area and other interested parties.
- Meetings, excursions, other activities



# Supervision

- Netherlands Enterprise Agency (RvO) and Dutch Food Safety Authority (NVWa) check randomly
- NFW's own inspection ('schouw') also checks randomly:
  - Based on a positive approach
  - If possible: possibility of recovery
- In case of deviations, a discount on the fee is possible





# Projects

- Field lab (Fjildlab)
- Area offer ('Gebiedsofferte')
- Projects for recovery of the landscape
- Projects for further development of meadow bird areas
- Plan of action for Godwit
- And many more...





# Public support

- Campaigns to involve citizens and businesses in what we do and to create support:



Hosts of the landscape  
(‘Gastheren van het landschap’)



Become a friend of NFW





# Benefits for members and governments

- Farmers can deal with NFW, “farmers union” on agricultural nature and landscape management
- Farmers association, thus a lot of practical farming knowlegde
- Respected partner for governement and municipalities representing a large group of farmers





# A day at the job







# Future

- Basically the collective system works, in the next 6 years we have to develop it further
- Farmers/members are motivated to do more
- NFW would like to grow also
- New insights lead to new management options
- Self-managing: we proved ourselves already for 7 years we would like to become even more self-managing





# More information

[www.noardlikefryskewalden.nl](http://www.noardlikefryskewalden.nl)

**Facebook:** Vereniging Noardlike Fryske Wâlden

**Instagram:** @noardlikefryskewalden

**Twitter:** Vereniging NFW

**LinkedIn:** Vereniging Noardlike Fryske Wâlden

**Youtube:** vereniging Noardlike Fryske Wâlden







# Questions?





